

Undergraduate
Prospectus

2023 Entry



WELCOME



Central London

The Shard

Tate Modern

River Thames

UCL East campus
approx. 40 mins travel

King's Cross / St Pancras Stations
18 mins walk from UCL

Euston Station
7 mins walk from UCL

East London

Stratford Station

Westfield Stratford City

Stratford International Station

UCL Bloomsbury campus
approx. 40 mins travel

Pudding Mill Lane Station
12 mins walk from UCL East



The London Eye

Houses of Parliament

British Museum

Oxford Street

UCL Bloomsbury campus

University College Hospital



London Aquatics Centre

The O2

Canary Wharf

River Thames

UCL East campus

ArcelorMittal Orbit

London Stadium

BBC

Sadler's Wells East

UAL London College of Fashion

V&A East

Queen Elizabeth Olympic Park

Copper Box Arena

Hackney Wick Station

UCL at Here East

Welcome to UCL



Why choose UCL?

- 04 Why UCL?
- 06 Disruptive thinking since 1826
- 08 Learn how to think – not what to think
- 10 Our Nobel laureates
- 12 Generation One
- 14 Educating new entrepreneurs
- 16 Cutting-edge facilities
- 18 Creating a campus for the future
- 20 An exciting new student experience
- 22 Our sustainable university



Student life

- 24 London is your classroom
- 26 UCL in London
- 28 A place to call home
- 30 A vibrant social life
- 32 Our global community
- 34 Support when you need it
- 36 Your future career



What can I study?

- 38 Our world-leading faculties
- 52 Find your perfect degree
- 54 Looking for inspiration?
- 56 Architecture, Construction and Planning
- 58 Arts and Sciences
- 60 Biological and Life Sciences
- 62 Business and Management Studies
- 63 Computer Science
- 64 Economics, Politics, Geography and Social Sciences
- 66 Education
- 67 Engineering
- 69 English and Comparative Literature
- 70 Fine Art and Art History
- 71 Historical and Philosophical Studies
- 73 Languages and Cultural Studies
- 77 Law
- 78 Mathematics and Statistics
- 80 Media
- 81 Medicine and Allied Subjects
- 83 Physical Sciences
- 85 Psychology and Language Sciences



Additional information

- 87 Choosing your university
- 88 Entry requirements
- 89 How to apply
- 90 Fees
- 91 Sources of funding
- 92 Accommodation
- 93 Degree programme index
- 95 General index
- 96 Discover UCL for yourself





1. MIT
2. University of Oxford
- 3 = Stanford University
- 3 = University of Cambridge
5. Harvard University
6. Caltech
7. Imperial College London
- 8 = UCL
- 8 = ETH Zurich
10. University of Chicago

8th in the world

QS World University Rankings 2022

- World-leading, world-impacting research*
- 400+ degree programmes
- Students from more than 150 countries
- 30 Nobel laureates
- An award-winning sustainable university[^]
- Over 300 student clubs and societies
- In the heart of London, the world's best student city^{**}

* Research Excellence Framework (REF 2014)

[^] People & Planet University League for environmental and ethical performance

^{**} QS Best Student Cities 2018, 2019, 2022

We're proud of our pioneering history, distinguished present and exciting future. UCL is a great place to be a student for so many reasons.

We have a proud heritage of disruptive thinking,
a reputation for game-changing research and a
unique multidisciplinary approach to problem solving.

Disruptive thin



king since 1826

UCL has confronted humanity's biggest issues since 1826. At that time, attending university was a rare privilege. If you weren't a man from a wealthy background and a member of the established church, higher education was off limits.

Our founders tore up that rule book. We were the first university in England to welcome students of any religion or social background. We were also the first in England to welcome women to university education.

We have challenged inequality ever since, and we hold a Silver Athena SWAN award in recognition of our progressive work practice. Each year, we invest £13.5 million in bursaries and activities to support students from diverse backgrounds to enter and succeed.

We were also the first university in England to teach subjects such as engineering, architecture and languages. Our ground-breaking heritage makes us proud, but it's the future that really excites us.

We are expanding with a new campus (UCL East) on Queen Elizabeth Olympic Park in Stratford, East London, that is fit for the 21st century and beyond. With physical spaces that are publicly accessible and programmes built around working with local communities, this next chapter for UCL embodies our founding principles – to better understand global challenges by bringing together diverse viewpoints.

Since our founding we have continually innovated our teaching methods. Our Connected Curriculum makes research the cornerstone of our students' activity. Our Arts and Sciences BASc leads the way in interdisciplinary study. Elsewhere, our collaborative teaching methods break down the boundaries between student and teacher, encouraging the bold thinkers of tomorrow.



**Learn how
to think – not
what to think**



We are here to further your knowledge, develop your skills of analysis and problem-solving and give you a truly global outlook that draws on diverse cultural perspectives.

Studying in London, you'll be living, learning and growing your network in one of the world's greatest cities. Through our Connected Curriculum you'll have the chance to work alongside some of the world's leading researchers. They will drive you to think more analytically and independently – providing opportunities to undertake research activities of your own and create original output.

Learning as part of an international community of great minds, you will develop the cultural fluency and global outlook that are prized by employers.

Throughout your time here, you'll have many opportunities to shape our curriculum and how it's delivered. Our collaborative approach also helps build the essential skills that make UCL graduates so in-demand, such as communication, teamwork, negotiation, entrepreneurship and project management.



Scan the QR code, or search: **'Discover UCL'** in YouTube to find out more.

UCL staff and alumni have won at least one Nobel Prize each decade since the award began in 1901, with more than half of our 30 Nobel laureates born outside the UK.

Our Nobel laureates



1904 – Chemistry
Sir William Ramsay

Discovered the noble gases: helium, argon, neon, krypton and xenon.

1913 – Literature
Rabindranath Tagore

Wrote profoundly sensitive, fresh and beautiful verse.

1915 – Physics
Sir William Henry Bragg

Analysed the structure of crystals using X-rays.

1921 – Chemistry
Frederick Soddy

Invented the concept of isotopes.

1922 – Physiology or Medicine
Archibald Vivian Hill

Founded biophysics.

1928 – Physics
Owen Willans Richardson

Discovered the law of thermionic emission.

1929 – Physiology or Medicine
Sir Frederick Gowland Hopkins

Discovered growth-stimulating vitamins.

1936 – Physiology or Medicine
Sir Henry Hallett Dale and Otto Loewi

Discovered neurotransmitters.

1938 – Physiology or Medicine
Corneille Jean Francois Heymans

Revealed how respiration is regulated.

1944 – Chemistry
Otto Hahn

Made discoveries leading to the development of nuclear technology.

1947 – Chemistry
Robert Robinson

Discovered the structure of morphine and strychnine.

1955 – Chemistry
Vincent du Vigneaud

Carried out the first synthesis of a polypeptide hormone, oxytocin.

1959 – Chemistry
Jaroslav Heyrovsky

Discovered polarography, widely used in clinical and environmental analysis.

1960 – Physiology or Medicine
Peter Brian Medawar

Discovered the key to successful organ and tissue transplantation.

1962 – Physiology or Medicine
Francis Harry Compton Crick

Discovered the molecular structure of nucleic acids (DNA).

1963 – Physiology or Medicine
Andrew Fielding Huxley

Revealed how activity is co-ordinated by a central nervous system.

1967 – Chemistry
George Porter (Baron Porter of Luddenham)

Devised flash photolysis to observe free radicals.

1970 – Physiology or Medicine
Sir Bernard Katz

Advanced remedies against nervous and mental disturbances.

1988 – Physiology or Medicine
Sir James Black

Discovered the first beta-blocker, propranolol.

1991 – Physiology or Medicine
Bert Sakmann

Discovered the role of ion channels in diseases, revolutionising cell biology.

2000 – Economics
James Heckman

Developed statistical analysis of individual and household behaviour.

2001 – Physiology or Medicine
Sir Paul Nurse

Enabled new avenues of research in tumour diagnostics and therapy.

2007 – Physiology or Medicine
Sir Martin Evans

Introduced gene modifications in mice.

2009 – Physics
Charles Kao

Developed the transmission of light for optical communication.

2013 – Physics
Peter Higgs

Predicted the particle: the Higgs boson.

2013 – Physiology or Medicine
James Rothman

Revealed how substances are trafficked by vesicles in our cells.

2014 – Physiology or Medicine
John O'Keefe

Discovered the 'inner GPS' in the brain.

2020 – Physics
Sir Roger Penrose

Proved that the general theory of relativity predicts the formation of black holes.

GENERATION 00:01

A UCL education is a climate education. We are Generation One – a collective of people committed to a new era of positive climate action. By turning science and ideas into action we are working towards creating a positive, fair and progressive future. For us and for the generations to come. Join us.

As a community of staff, students, citizens and partners, UCL is addressing the climate challenge on multiple fronts – ranging from what we can achieve today to pioneering future system change, as well as putting sustainability at the heart of our campus.

Our students bring new thinking on climate action to their studies and everyday lives. The UCL experience provides a wealth of opportunity to take climate action while you're here and to develop as climate leaders for when you go into the wider world.

We can all play our part. Get inspired by the extraordinary breadth of climate-focused activity taking place at UCL, find out about our Generation One campaign and how you can get involved.



To join us scan the QR code, or search: '[UCL Generation One](#)' to find out more.

Does the Earth have to be a fashion victim?

Every year, the fashion industry generates 10% of the world's global carbon emissions. It's why UCL scientists have pioneered a more sustainable method to help make propylene – a common ingredient in the fabrics and plastics of the clothes and shoes we wear.

Take action now

Visit a charity shop or try a swap shop when looking for a new outfit and reduce the 10,000 items of clothing sent to landfill every five minutes in the UK.



How can we eat our way to a better planet?

UCL researchers are tracking the environmental impact of food production on the environment to help industry and individuals make healthier and more sustainable choices.

Take action now

Take a look at the carbon footprint of your favourite foods and consider the lower environmental impact of plant-based food.

Trees matter, but just how much?

Trees are crucial to combating climate change. It's why we've developed 3D laser mapping to help measure how much carbon dioxide the world's trees absorb today – and predict how much they'll store in the future.

Take action now

Use your smartphone to help NASA measure the world's trees and find out how much carbon they store.



How far can we go with electric batteries?

Cars account for 18% of the UK's carbon emissions, so it's essential we move to electric vehicles. At UCL we're developing lithium-ion battery cells with a higher energy density to enable electric vehicles to go further in between charges.

Take action now

Walking, cycling and public transport are still the most climate-friendly modes of travel. If you do have a car, electric or otherwise, keep your car tyres fully inflated to improve fuel efficiency by up to 3%.



Rice Inc

Social enterprise Rice Inc works with more than 200 farmers in Southeast Asia to eliminate food waste, promote sustainability and achieve food security. Its co-founders Kisum Chan and Lincoln Lee (Biomedical Sciences BSc) started the business in their third year of study.

Educating new entrepreneurs



Neucruit

UCL start-up Neucruit has developed a unique digital platform to help in the recruitment and engagement of patients in clinical trials. Founded by Livia Ng (Neuroscience BSc), the platform will speed up scientific advances and ultimately bring health benefits to people sooner.

Whether you plan to start your own business, tackle global issues or kick-start your dream career, we are here to help develop your entrepreneurial skills and thinking.

Our tailored, free extracurricular entrepreneurship programme, run by UCL Innovation and Enterprise, provides you with the skills, knowledge and hands-on experience you need to get your ideas off the ground and make a difference in the world.

If you want to start your own business our expert business advisors will provide mentoring and support to help steer your venture to success. You can also take advantage of free office space in The Hatchery, our dynamic start-up space at BaseKX in King's Cross.



ZNotes

Online learning platform ZNotes delivers quality education for school students, regardless of background, through free revision notes and online content. Its founder Zubair Junjuna (Mathematics MSci) received the Diana Award in 2021 for the technology and social-impact start-up that has helped more than 3.5 million students in 198 countries.



Scan the QR code, or search: 'UCL entrepreneurship' to find out more.

We are investing in a university fit for the 21st century and beyond. At UCL you'll find all the cutting-edge facilities you need to achieve great things.

Student Centre

Designed entirely around our students' needs, our Student Centre includes 1,000 individual, group and open-plan study spaces, quiet contemplation areas and easy access to help and support at the dedicated Student Enquiries Centre.

Cutting-edge facilities



We are over halfway through our 10-year, £1.25 billion investment in creating sustainable spaces and best-in-class facilities – giving our staff and students the tools to take their learning and discoveries further – with many award-winning developments in Bloomsbury already completed.

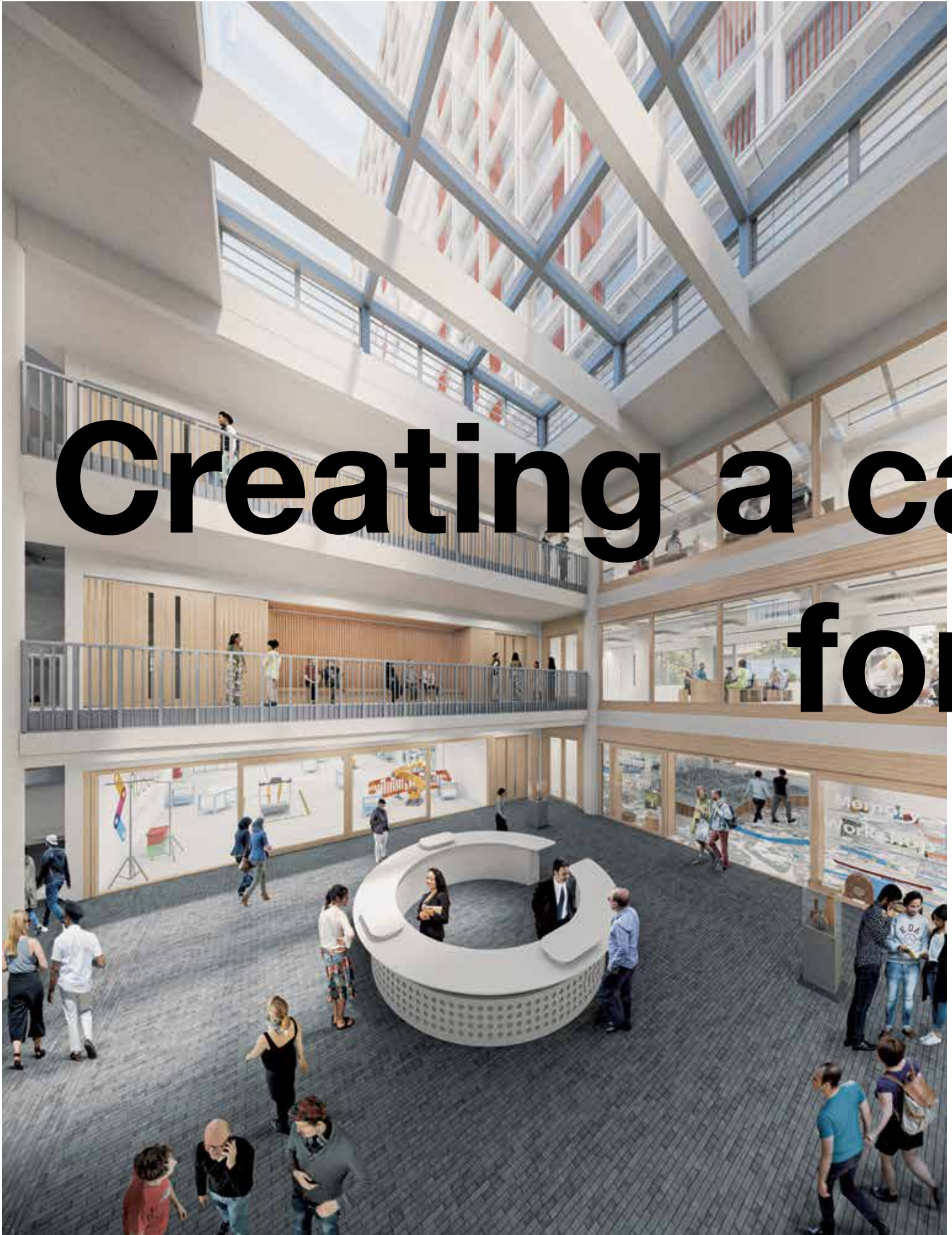
Our UCL East campus includes state-of-the-art laboratories, fabrication workshops, collaboration areas and public spaces, as well as a cinema, art installations and contemporary student accommodation.

We are creating a living laboratory of learning in an area committed to biodiversity throughout the parklands and waterways that run through the Olympic Park.

We also have a treasured venue in the Bloomsbury Theatre, which hosts plays, live music and comedy – as well as performances by our students and staff.

UCL's historic libraries, collections, museums and galleries – spanning everything from Egyptology to pathology, zoology to fine art – are actively used in teaching.





Creating a ca for



mpus the future

UCL East builds on our progressive history, positive impact and disruptive spirit. We are creating an experiential and accessible learning environment in which transformative research, collaboration and engagement will create a better world.

UCL East will neighbour small businesses, artist studios and start-ups. Wander through the landscaped park with its wetlands and wildlife and you will soon find Hackney Wick, a lively destination day or night, with its quirky cafés, eateries, craft breweries and bars along the River Lee canal.

Our new buildings will provide facilities for cross-disciplinary research and open innovation, new approaches to practical learning and opportunities for public engagement. This world-class academic hub will sit alongside contemporary student accommodation that will provide an exciting new student living experience in London's vibrant east end.

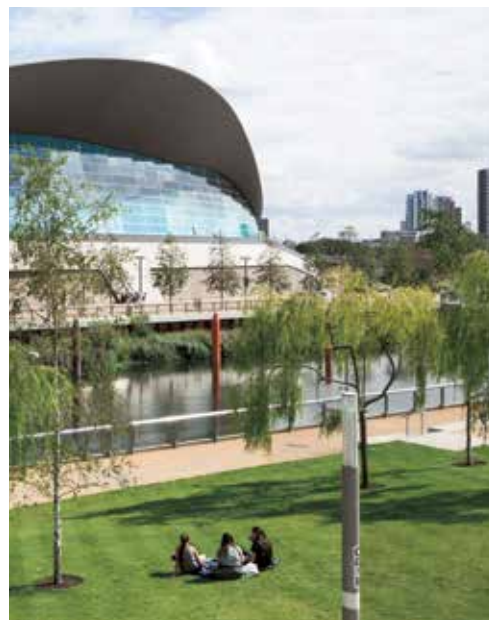
Whatever you choose to study, the combinations and potential for discovery are boundless.



Scan the QR code, or search: **'UCL East'** in YouTube to find out more.

We will equip the next generation of disruptive thinkers with valuable opportunities for collaborative exchange as they rise to meet humanity's greatest challenges.

An exciting new student experience



Our new UCL East campus in Stratford is made for collaboration. Whatever you choose to study – our innovative programmes offer a wide choice of modules developed with experts from business and industry – you will have the chance to get involved in projects in the local community, making an impression beyond the laboratory or lecture theatre and giving you vital skills for the workplace.

Bringing together diverse minds and different cultural perspectives, you'll make friends and create professional networks across a range of fields that will last throughout your lifetime and career.

UCL East will be home to programmes that help create a fairer, more equal world in the face of global challenges, particularly in the fields of sustainable cities, transformative technology, global health, cultural understanding, justice and equality and human wellbeing. We're excited for you to join us in translating world-class research into real-world impact.



Our sustainable university





Our world-leading research, addressing the climate and ecological crises, informs the changes we're making here at UCL. We hope to inspire a generation of change makers to take the lead on climate and sustainability action across the world.

Sustainability is at the heart of how we operate. UCL's award-winning sustainable campus is already powered by 100% renewable electricity and we send no waste to landfill, but our longer-term vision is much more ambitious.

By 2024, all our buildings will be net zero carbon and free from single-use plastics; we will have 10,000m² more biodiverse green space. UCL East has been designed with sustainability at its core: turning rubble into

skateboard ramps, rainwater harvesting, low energy lighting and highly efficient mechanical ventilation, we have worked to minimise the carbon footprint of our new campus.

As a student at UCL, you will have the opportunity to join one of our many sustainability societies, get growing on campus on our student-led allotment, or sign up to be a Sustainability Ambassador.

Through our teaching programmes, we pass on our knowledge of sustainable best-practice to our students, to ensure that they become sustainability advocates to benefit the wider world.



Scan the QR code, or search: **'Change possible UCL'** in YouTube to find out more.

London is your classroom



Your life in London is a crucial part of your education and you will have the opportunity to study, live and play in not just one iconic part of London but two, with the opening of our new campus in Stratford to complement our established home in Bloomsbury.



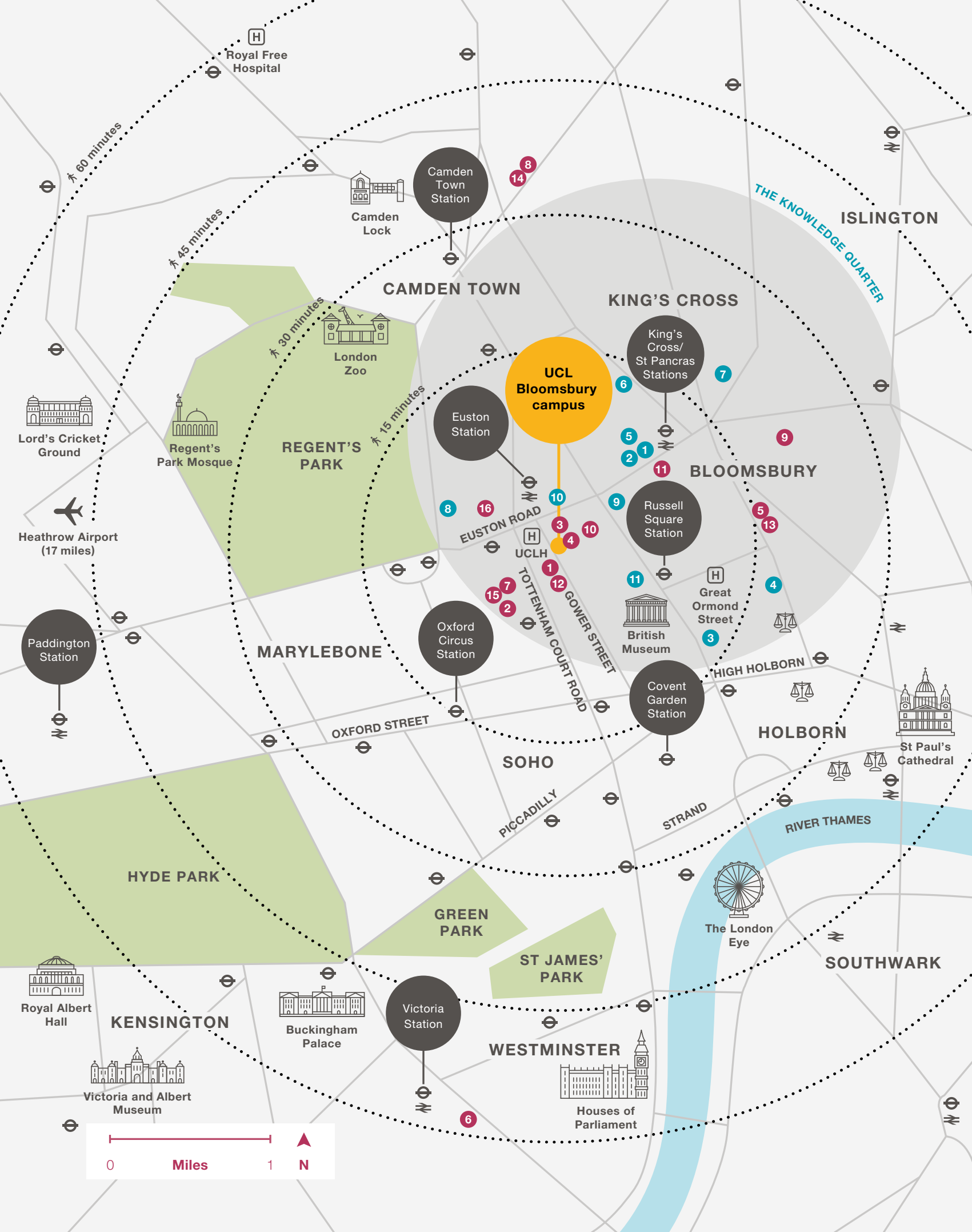
Bloomsbury itself is the historic home of Virginia Woolf and her 'Bloomsbury Group': writers, intellectuals, philosophers and artists who proudly challenged convention in both their lives and their work during the first half of the 20th century.

A wealth of knowledge and culture is on your doorstep at the world-renowned British Museum and British Library. And as part of London's 'Knowledge Quarter', we are surrounded by more than 75 academic, research, cultural, media and technology institutions of all shapes and sizes – from Google to the Charles Dickens Museum.

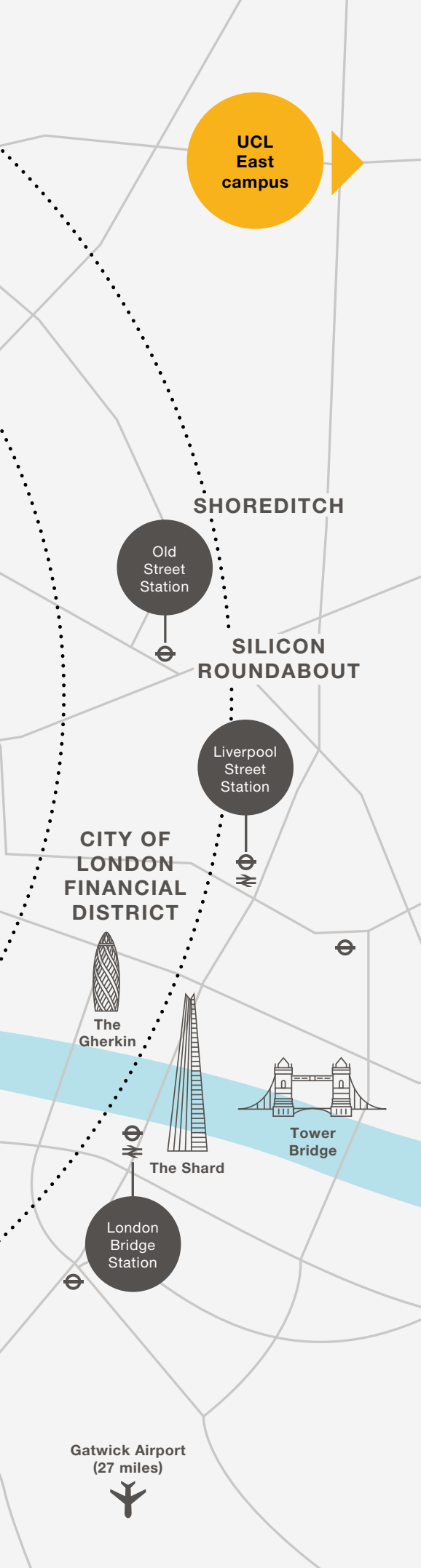
On Queen Elizabeth Olympic Park in Stratford, UCL joins partners the BBC, Sadler's Wells, UAL London College of Fashion and the V&A (Victoria and Albert Museum) at East Bank, a brand-new destination for London, with world-class culture and education at its heart.

With easy transport links across London, to the rest of the UK and continental Europe, there's always something to do, see and learn.





UCL in London



▲ Stratford, East London
 ◀ Central London

- | | | |
|--|---|--|
| <ul style="list-style-type: none"> ● UCL accommodation 1 Arthur Tattersall House 2 Astor College 3 Campbell House East 4 Campbell House West 5 Frances Gardner House 6 Goldsmid House 7 Ian Baker House 8 Ifor Evans Hall 9 James Lighthill House 10 John Adams Hall 11 John Dodgson House 12 John Tovell House 13 Langton Close 14 Max Rayne House 15 Ramsay Hall 16 Schafer House 17 Pool Street West | <ul style="list-style-type: none"> ● Knowledge institutions 1 Alan Turing Institute 2 British Library 3 BT Archives 4 Charles Dickens Museum 5 Francis Crick Institute 6 Google 7 Institute of Physics 8 Royal College of Physicians 9 The BMJ (British Medical Journal) 10 Wellcome Collection 11 Wiener Holocaust Library 12 V&A East 13 UAL London College of Fashion 14 BBC 15 Sadler's Wells East | <ul style="list-style-type: none"> ● UCL ● Knowledge Quarter ● Knowledge institutions ● UCL accommodation ○ Walking distances from UCL campus ■ Parks ■ Rivers and canals ⊖ Underground stations ≡ Train stations ⊠ Hospitals ⚖ Inns of Court |
|--|---|--|
- Plan your journey and find out more:
tfl.gov.uk/plan-a-journey

A place to call home





Moving to a new city as a first-year undergraduate can be a major change, but you'll find a warm welcome at UCL.

More than 150 countries are represented in our diverse student community, and you'll make friends for life from all over the world here.

But first, you need a place to call home while you study. We will guarantee you accommodation in your first year, regardless of where you currently live, as long as:

- you will be a single, first-year undergraduate,
- you have chosen UCL as your firm choice through UCAS by the deadline (currently 31 May of the cycle in which you applied),
- you submit your accommodation application online by the deadline (currently 31 May of the year of entry),
- you have not previously lived or studied at a university in London (inside the M25 motorway).

Types of accommodation available

- Catered accommodation in which meals are included (breakfast and an evening dinner from Monday to Friday and brunch on Saturday and Sunday). You also have access to a small kitchen to prepare meals outside these times.
- Self-catered accommodation where you will share kitchen facilities (cooker, refrigerator, freezer, kettle, toaster and microwave) to prepare your own meals.

All UCL accommodation is offered for 39 weeks and is located in central London (Zones 1 or 2 of London's public transport network).

Students with additional requirements

- Students with disabilities: we have a limited number of rooms available for students with additional requirements. Contact us for details – accommodation@ucl.ac.uk
- Students with families: we have limited accommodation available for students with families. Contact us for details – accommodation@ucl.ac.uk
- Care experience and estranged students: we will provide 365-day accommodation in the first year and, if needed, for subsequent years of study.

Further details about accommodation can be found on p92.



Scan the QR code, or search: **'UCL accommodation'** to find out more.

* Climate Action Society
Bubble Tea Society
Ultimate Frisbee Club
Knitting Society
Gaming Society
Argentinian Tango Society
Dodgeball Club
Harry Potter Society
Juggling & Circus Society
Blockchain Labs
Space Society
K-POP Society
Karting Club
Parkour Club
Graphic Novels & Comics Society
Medieval Society
Conservation Society
Yoga & Meditation Club
Vegetarian & Vegan Society
Hiking Club
Comedy Club
Sign Language Society
Anatomy Society
Art Society



Scan the QR code, or search:
'UCL Students' Union' to find
out more.

Through our Students' Union,
you'll make lifelong memories
and get the most from London.



A vibrant social life



The Students' Union is here to help you do more at UCL, to make the most of London and the opportunities you have here. As soon as you join UCL you become a member of the Union and can start taking advantage of all the things it has to offer – like joining as many of the 300 clubs and societies as you want.

Clubs and societies are at the heart of student life at UCL. They're your social group on campus, your support network and your route to experiences you won't find anywhere else. More than a third of all students at UCL are members of clubs and societies.

TeamUCL is the collective name for all of our sports teams at UCL. They compete nationally against universities across the UK and there are lots of ways for you to get involved and play and train regularly.

Sport at the Union is award-winningly inclusive[^], with an active Pride in Sport LGBT+ campaign and a commitment to helping all students enjoy an active lifestyle, no matter what their level of ability.

Beyond clubs and societies, the Union has so much more to offer.

[^] BUCS #TakeAStand Award 2017



Abigail Irozuru (Law LLB, 2012)
GB Olympic Long Jump Athlete
British Indoor Champion 2020

“The attitude at UCL is both fun and focused. You realise that the people you meet on your programme, in the Cloisters and halls will be future game-changers – as will you – and that is inspiring!”

Our global community



Scan the QR code,
or search: '[UCL alumni](#)'
to find out more.

As a UCL student, you become a lifelong member of a truly global community. Our extraordinary alumni, with their bold, brilliant and inquisitive minds, go on to discover and achieve remarkable things across the globe.



Over 350,000 UCL alumni live in more than 190 countries worldwide. We count Nobel Prize winners, poets, novelists, BAFTA winners, Olympians, inventors and Turner Prize-winning artists among our graduates.

From your first day at UCL, this network is there to support and inspire you. Experienced alumni volunteers provide guidance through our exclusive mentoring platform and share their insights through panel discussions, skills workshops and internship opportunities.

You will also have the chance to make valuable contacts to accelerate your career at alumni-led speed networking events and social events, in the UK and overseas.

Wherever life takes you after graduation, UCL's global community will be there to support you. From international clubs to industry networks, professional development programmes and lifelong library access, there's no shortage of ways to stay connected.



Can I Help?





Scan the QR code,
or search: '[UCL wellbeing](#)'
to find out more.

We are here to support you through any challenges you face while studying here, beginning with a wealth of resources to help new students prepare and settle in – including useful newsletters, apps and guides.

Support when you need it



Our Transition Programme is designed to help you adapt to university life and includes access to a mentor and social sessions to help you find your feet. You'll also be assigned a Personal Tutor, who can give you academic guidance and steer you towards any help you might need on practical and personal matters.

New international students are invited to a series of online orientation events before they arrive in the UK, followed by in-person orientation events that run the week before term starts.

If you need more support, UCL Student Support and Wellbeing offers information, advice and services to help all our students thrive. This includes free, easy-to-access mental health and wellbeing advisers, counselling, disability assistance, events to help you look after yourself and much more. We also have a dedicated team of department-specific Student Advisers, who are on hand to support first-year undergraduates.



We take your future ambitions seriously and provide you with the support you need to realise your full potential. UCL graduates are in-demand and more than 900 employers attend our careers events every year.



Scan the QR code, or search: '[UCL careers](#)' to find out more.



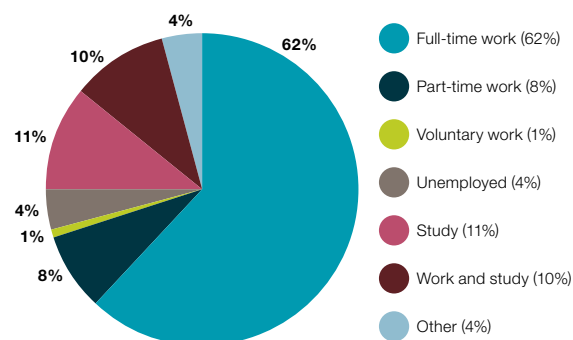
Every week, more than 21,000 jobs, internships and work experience opportunities are promoted on the myUCLCareers portal. Through the UCL Talent Bank, we can connect you directly to small-to-medium-sized employers who are actively recruiting UCL graduates.

We also run employer-led coaching in areas such as leadership, negotiation and interview skills; workshops and advice sessions to help with your applications; and dedicated internship programmes.

Many of our services are still available up to three years after you leave.

Career destinations of UCL graduates 15 months after graduation*

This shows the first career destinations of UK/EU students 15 months after their graduation from UCL in 2019. The median starting salary of those graduates in full-time work is £31,000.



Your future career

* All data taken from the Graduate Outcomes survey undertaken by the Higher Education Statistics Agency (HESA), looking at the destinations of UK and EU graduates in the 2019 cohort.

^ 'Other' represents a grouping of activities in which personal circumstances or choice has influenced the graduate's immediate options, this includes those: travelling (e.g. taking a gap year); looking after the home or family/temporarily sick or unable to work; not employed but not looking for employment, further study or training; permanently unable to work or retired.

Faculty of Arts and Humanities

The Bartlett Faculty of the
Built Environment

Faculty of Brain Sciences

IOE, Faculty of Education and Society

Faculty of Engineering Sciences

Faculty of Laws

Faculty of Life Sciences

Faculty of Mathematical
and Physical Sciences

Faculty of Medical Sciences

Faculty of Population Health Sciences

Faculty of Social and Historical Sciences

School of Slavonic and East European
Studies (SSEES)





Our world-leading faculties



UCL is split into several faculties. Whichever programme you choose, you'll be surrounded by fellow curious minds, learn from world-class academics and benefit from outstanding facilities. We provide a place to belong, be yourself and realise your potential.

Discover more about each faculty over the following pages.



Faculty of Arts and Humanities

Our faculty spans traditional humanities and the creative arts: Arts and Sciences (Liberal Arts), English, European and International Social and Political Studies, Fine Art, Greek and Latin (Classics), Hebrew and Jewish Studies, Information Studies, Modern Languages and Philosophy.

- UCL's arts and humanities are ranked fifth in the world* and our nine departments offer more than 200 distinctive undergraduate degree programmes.
- Students have access to London's vast range of cultural organisations, including the British Library, British Museum, the National Gallery, the British Film Institute and the Tate galleries.
- The faculty's progressive approach to teaching and research is rooted in a vibrant, supportive and enabling community. We bring together over 20 languages to offer the widest range of language and language-related degrees in the UK.

* Times Higher Education World University Rankings by Subject 2022



You can find our programmes in:

- Arts and Sciences [p58](#)
- Economics, Politics, Geography and Social Sciences [p64](#)
- English and Comparative Literature [p69](#)
- Fine Art and Art History [p70](#)
- Historical and Philosophical Studies [p71](#)
- Languages and Cultural Studies [p73](#)



The Bartlett Faculty of the Built Environment

The Bartlett is one of the oldest and most innovative faculties of its kind. Our vision is of a world where everything that is built aims to add to the wellbeing of people and the environment.

- The Bartlett is ranked second in the world for Architecture/Built Environment* and the *Architect's Journal* AJ100 has ranked the Bartlett School of Architecture the top architecture school for 17 consecutive years.
- Located in London, with a wealth of urban history on our doorstep, we are proud to collaborate with leading institutions from industry, government and beyond.
- The Bartlett Promise will help to tackle the lack of diversity within the built environment by providing full funding and additional support for students from under-represented groups.

* QS World University Rankings by Subject 2021



You can find our programmes in:

- Architecture, Construction and Planning [p56](#)

Faculty of Brain Sciences

A global leader in research and education into the mind and brain, we use our expertise to solve some of the world's greatest health challenges, transforming society by reducing the burden of disease.



- UCL's Faculty of Brain Sciences is best in the UK for neuroscience, psychiatry and psychology, with more than half of our research in these areas rated as world-leading (4*).*
- We are home to some of the world's most influential and creative researchers in the field of brain sciences: 16 of our faculty's professors are named among the most influential in the world.^
- UCL is first in Europe and second in the world for neuroscience and behaviour studies.**

* Research Excellence Framework (2014)

^ Clarivate Web of Science Highly Cited Researchers 2021

** NTU Ranking 2020



You can find our programmes in:

- Medicine and Allied Subjects [p81](#)
- Psychology and Language Sciences [p85](#)

IOE, Faculty of Education and Society

The IOE has been ranked first in the world for education for eight years running.* We offer a lens to examine society and understand more about the world, promoting equity and inclusion.

- Our research improves lives, from our study of early years education that has shaped policy around the world, to our collaborations with autistic people to translate research into action and our work with the United Nations to help address gender-based violence.
- Students are our most important collaborators. New ideas and new research are given meaning through your real-life experiences. Our graduates go on to influence future generations for the better, from individual lives to societal change.
- Whether in education or research, our work helps us to understand how and why people are different, what challenges this presents and what we can do to create a fairer, more just and more equitable society.

* QS World University Rankings by Subject 2014–2021



You can find our programmes in:

- Economics, Politics, Geography and Social Sciences [p64](#)
- Education [p66](#)
- Media [p80](#)
- Psychology and Language Sciences [p85](#)



Faculty of Engineering Sciences

UCL founded the world's first laboratory devoted to engineering education more than 180 years ago and is now home to some of the most successful engineering departments in the UK. Our engineers deal with a vast range of challenges, creating solutions that change the world.



- Our engineers have been at the forefront of the response to the COVID-19 pandemic, working with clinicians from UCLH and Mercedes-AMG High Performance Powertrains to produce Continuous Positive Airway Pressure (CPAP) breathing aids for patients. These devices are now saving lives in more than 30 countries.
- We work closely with industry and have strong links with, among others, Arup, Cisco, GSK, Google, Microsoft and Rolls Royce.
- Our How to Change the World training programme (run with major governmental, NGO and industrial partners) equips our young engineers with the creative and technical skills to solve pressing 21st-century challenges.



You can find our programmes in:

- Business and Management Studies [p62](#)
- Computer Science [p63](#)
- Economics, Politics, Geography and Social Sciences [p64](#)
- Engineering [p67](#)
- Physical Sciences [p83](#)

Faculty of Laws

UCL Laws is a law school for the world: a diverse and radical community of academics, researchers, students and alumni embedded in a leading research-oriented university.



- Eliza Orme (1848–1937) became the first woman in England to earn a law degree when she graduated from UCL Laws in 1888.
- UCL Laws students make a valuable contribution to society by taking part in voluntary projects. For example, through the UCL Centre for Access to Justice they offer free legal services to those otherwise unable to afford them.
- UCL Laws is consistently listed as one of the top law schools in rankings – second in the UK* and sixth in the world.^

* The Guardian University Guide 2022

^ Times Higher Education World University Rankings by Subject 2022

You can find our programmes in:

- Law p77

Faculty of Life Sciences

UCL Life Sciences offers an outstanding portfolio of programmes in biological and biomedical sciences, neuroscience, pharmacy, pharmacological and pharmaceutical sciences – studied in state-of-the-art facilities with world-renowned researchers and clinicians.



- Our world-class research institutes include the Centre for Biodiversity and Environment Research, the Institute for Healthy Ageing and the Sainsbury Wellcome Centre for Neural Circuits and Behaviour.
- UCL Life Sciences staff and students are actively engaged in research and innovation in global biodiversity, health, disease and pharmaceuticals. Recent student entrepreneurs were awarded the Hult Prize, worth \$1 million, for developing a sustainable and cost-saving approach to rice production.
- Associated with nine Nobel Prize winners over the years, today UCL Life Sciences continues to change the way we understand the world from the challenges of environmental change to the 3D printing of pharmaceuticals.



You can find our programmes in:

- Biological and Life Sciences [p60](#)
- Medicine and Allied Subjects [p81](#)

Faculty of Mathematical and Physical Sciences

The faculty encompasses the logical, experimental and mathematical study of our universe. Frontline research feeds directly into our teaching programmes, and our students benefit from access to outstanding facilities.



- Our departments rank in the top 10 for the Mathematical and Physical Sciences in the UK.*
- Our students and academics have been part of exciting discoveries, including new supernovas, water on habitable planets and the first images of a black hole.
- We are proud to count Dame Kathleen Lonsdale, UCL scientist, Quaker and pacifist, as one of our inspiring alumni. She conducted ground-breaking research in crystallography and in 1945 was one of the first women ever to be elected a Fellow of the Royal Society.

* QS World University Rankings by Subject 2021

You can find our programmes in:

- Economics, Politics, Geography and Social Sciences [p64](#)
- Historical and Philosophical Studies [p71](#)
- Mathematics and Statistics [p78](#)
- Physical Sciences (Chemistry, Earth Sciences, Natural Sciences, Physics and Astronomy) [p83](#)



Faculty of Medical Sciences

We are at the forefront of fighting the world's biggest health problems. You could be the breakthrough. Our range of flexible programmes could kick-start your career in medicine, innovation, pharmaceuticals or public health.



- UCL is ranked number one in London and in the top 10 in the world for medicine.*
- UCL's MBBS is internationally renowned and the additional seven innovative BSc programmes are tailored to the needs of our changing world, equipping students with the discipline and skills needed to set off on a career in medical or biomedical sciences.
- Our pioneering research, leading academics and clinicians, cutting-edge facilities and outstanding partner hospitals and institutions create an unrivalled environment for medical science teaching.

* QS World University Rankings by Subject 2021



You can find our programmes in:

- Biological and Life Sciences [p60](#)
- Medicine and Allied Subjects [p81](#)

Faculty of Population Health Sciences

Population Health Sciences studies the factors that shape our health, including the social and physical environment, the way we live, healthcare systems and our genes. Our graduates are equipped to improve health equity locally and globally, wherever they are in the world.

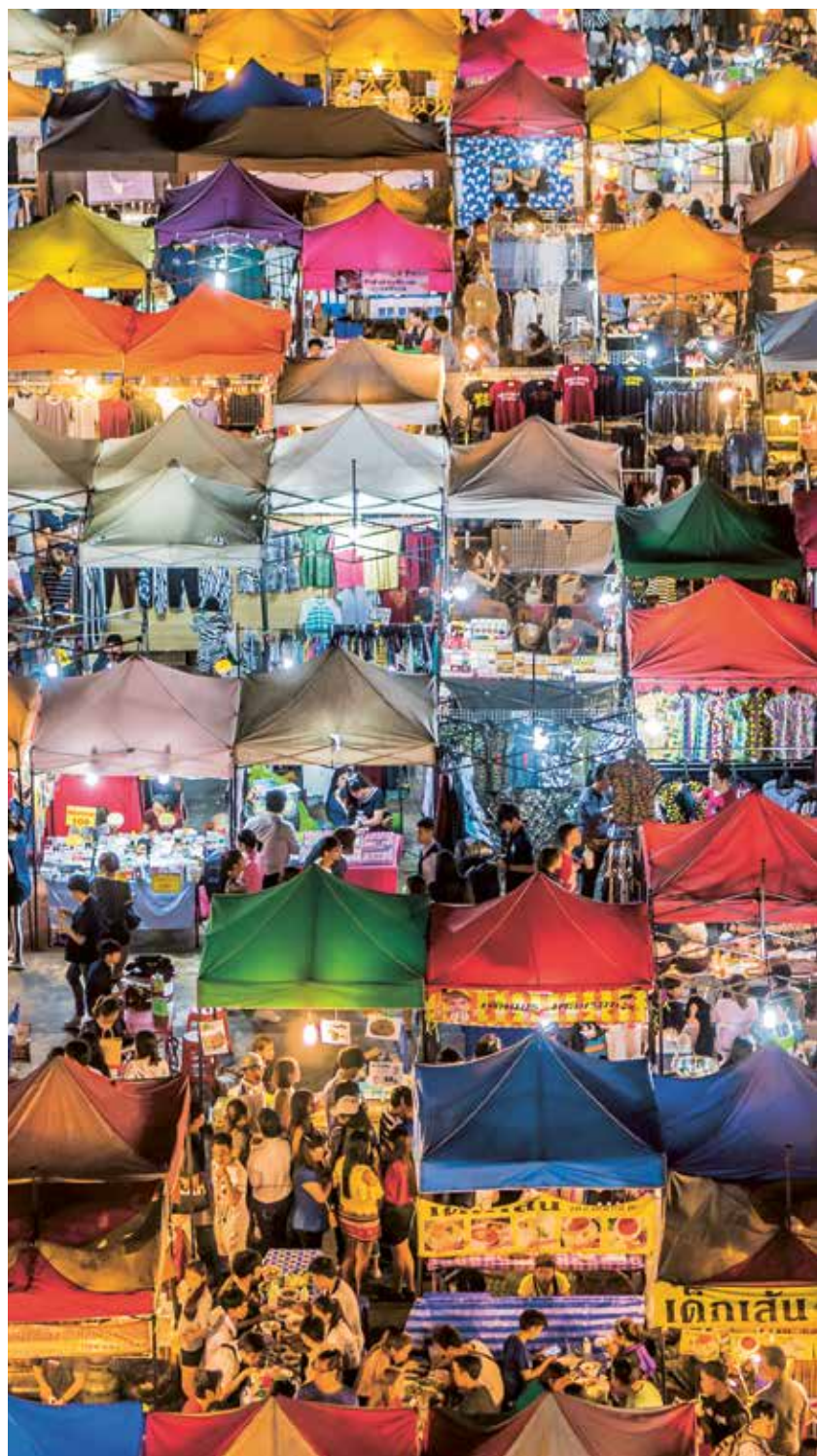
- UCL is ranked fifth in the world for public health* and we are the top-rated university in the Russell Group for research in public health.^
- Our researchers have taken a prominent role in advancing public knowledge about COVID-19, working across disciplines to research the effects of the virus on UK and global populations in terms of transmission and genotyping, as well as impacts on BAME communities and other socially excluded groups.
- We collaborate with world-renowned institutions including the World Health Organization, the NHS, Great Ormond Street Hospital and the Wellcome Trust.
- Our Population Health Sciences degrees will enable you to work with big data to answer important questions on the obesity epidemic, population ageing, epigenetics and many more.

* ShanghaiRanking Global Ranking of Academics Subjects 2021

^ Research Excellence Framework 2014

You can find our programmes in:

- Medicine and Allied Subjects [p81](#)



Faculty of Social and Historical Sciences

Our departments and institutes – Anthropology, Archaeology, the Americas, Economics, Geography, History, History of Art and Political Science – explore the social, political, economic, cultural and environmental processes that shape our world over time.

- We are intellectually diverse and world leading, with our social sciences subjects ranked 13th in the world and our arts and humanities subjects placed fifth.*
- Our academics develop cutting-edge, cross-disciplinary research and education. We'll challenge you to think in new ways and to radically extend your understanding of your chosen subject.
- Our students have unrivalled access to world-leading resources nearby, including the British Library, British Museum, the Wellcome Collection and the Warburg Institute, as well as state-of-the-art laboratories on campus.
- We're proud that 86% of our graduates go into graduate level work or higher study in a variety of sectors, from financial services and consultancy to health and social care and the creative arts.^

* Times Higher Education World University Rankings by Subject 2022

^ Graduate Outcomes survey carried out by the Higher Education Statistics Agency (HESA) for 2019



You can find our programmes in:

- Economics, Politics, Geography and Social Sciences [p64](#)
- Fine Art and Art History [p70](#)
- Historical and Philosophical Studies [p71](#)
- Languages and Cultural Studies [p73](#)



School of Slavonic and East European Studies (SSEES)

UCL SSEES offers a unique range of flexible programmes – in Business, Culture, Economics, History, Languages, Politics and Sociology – focused on Russia, the Baltics, Central, Eastern and South-Eastern Europe.

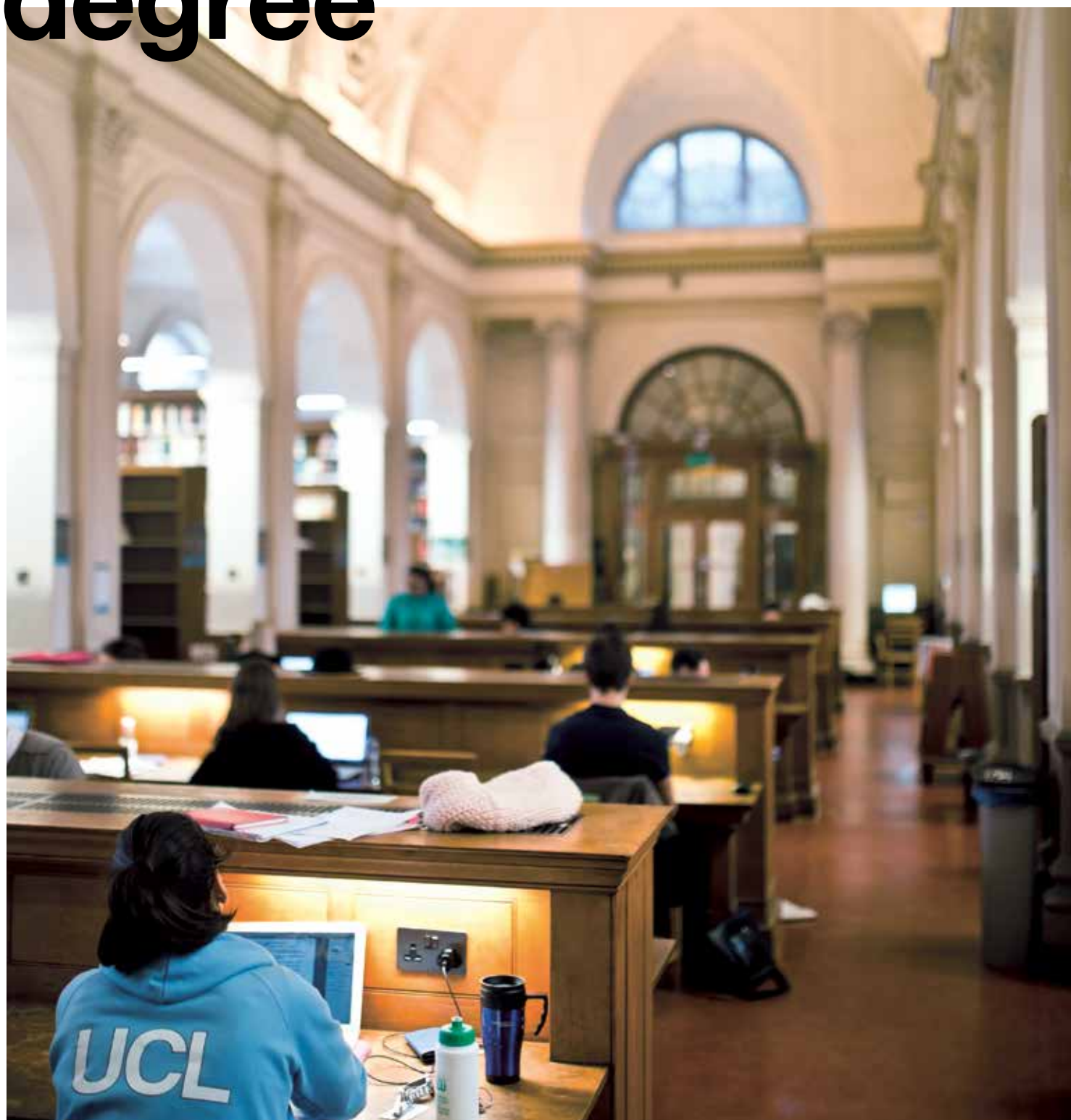
- We are a multidisciplinary centre of expertise offering insight into key issues affecting the region – for example, Putin's evolving relationship with the West; emerging markets; and the rise of populism.
- Students have the chance to learn one of the region's 10 languages and study abroad at a partner university.
- We have an extensive public events series and regularly host ambassadors, political figures and notable speakers, such as journalist Marie Le Conte and economist Thomas Piketty.
- The SSEES Library is renowned for its specialist collections, including a vast array of films and documentaries from Central and Eastern Europe and Russia.

You can find our programmes in:

- Economics, Politics, Geography and Social Sciences [p64](#)
- Historical and Philosophical Studies [p71](#)
- Languages and Cultural Studies [p73](#)



Find your perfect degree



Browse more than 400 different programmes covering a huge range of subject areas.

Architecture, Construction and Planning [p56](#) /
Arts and Sciences [p58](#) / Biological and Life
Sciences [p60](#) / Business and Management
Studies [p62](#) / Computer Science [p63](#) / Economics,
Politics, Geography and Social Sciences [p64](#) /
Education [p66](#) / Engineering [p67](#) / English and
Comparative Literature [p69](#) / Fine Art and
Art History [p70](#) / Historical and Philosophical
Studies [p71](#) / Languages and Cultural Studies [p73](#) /
Law [p77](#) / Mathematics and Statistics [p78](#) /
Media [p80](#) / Medicine and Allied Subjects [p81](#) /
Physical Sciences [p83](#) / Psychology and
Language Sciences [p85](#)



Scan the QR code,
or search: '[UCL Prospectus](#)'
to find out more.

Looking for inspiration?

Choosing a degree programme that suits your passions and/or career aspirations can be challenging. The A levels or IB Diploma subjects you take can open up a wide variety of programmes that you may not have considered. Here are some ideas to inspire you.



Love Geography? Study...

- Crime and Security Science BSc
- Global Humanitarian Studies BSc
- Population Health Sciences BSc
- Sociology BSc
- Sociology and Politics of Science BSc
- Urban Studies BSc



Love History? Study...

- Ancient World BA
- Anthropology BSc
- Archaeology BA/BSc
- Heritage BA
- History and Philosophy of Science BSc
- Viking and Old Norse Studies BA



Love Biology? Study...

- Bioprocessing of New Medicines (Business and Management) BSc
- Natural Sciences BSc/MSci
- Neuroscience BSc/MSci
- Nutrition and Medical Sciences BSc
- Psychology and Language Sciences BSc/MSci
- Sport and Exercise Medical Sciences BSc

Love English? Study...

- Comparative Literature BA
- Education Studies BA
- Linguistics BA

Love Chemistry? Study...

- Chemical Engineering BEng/MEng
- Earth Sciences BSc/MSci
- Environmental Geoscience BSc/MSci
- Geology BSc/MSci
- Natural Sciences BSc/MSci
- Pharmacy MPharm



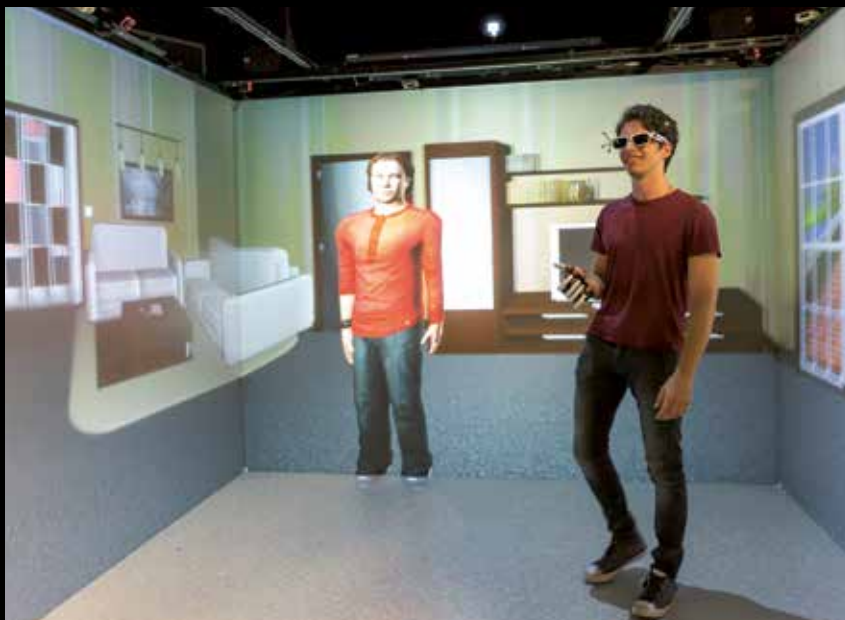
Love Languages? Study...

- Ancient Languages BA
- Dutch and German BA
- French with Management Studies BA
- Language and Culture BA
- Spanish and Portuguese BA
- Russian with an East European Language BA



Love Physics? Study...

- Astrophysics BSc/MSci
- Civil Engineering BEng/MEng
- Engineering and Architectural Design MEng
- Geophysics BSc/MSci
- Natural Sciences BSc/MSci
- Physics with Medical Physics BSc



Love Mathematics? Study...

- Civil Engineering BEng/MEng
- Computer Science BSc/MEng
- Mathematical Computation MEng
- Robotics and Artificial Intelligence MEng
- Social Sciences with Data Science BSc

Love both arts and science subjects? Study...

- Arts and Sciences BASc
- Arts and Sciences with Study Abroad BASc

Architecture, Construction and Planning

We're the Bartlett, UCL's Faculty of the Built Environment. We work with students from around the world to imagine, plan, design and create a better built environment.



Studying with us at the Bartlett is about the bigger picture. It's about excelling at an individual discipline within the context of many others and discovering specialisms, themes and passions that take you where you want to be. Whether your ambition is to design better buildings, plan better cities, build sustainable communities, or help meet the challenge of climate change, our programmes could be a big step towards it.

➤ **First career destinations:**

- Architects
- CAD, drawing and architectural technicians
- Chartered architectural technologists, planning officers and consultants
- Graphic and multimedia designers

◊ **Related programmes can be found in:**

- Economics, Politics, Geography and Social Sciences [p64](#)
- Engineering [p67](#)

Did you know?

UCL is ranked first in the UK for architecture and the built environment.

QS World University Rankings by Subject 2021



Entry requirements:



Programme-specific entry requirements (including contextual offers and other qualifications) can be found at: 'ucl.ac.uk/prospectus' or scan the QR code.

	Programme	UCAS	Duration	Features	Location	Notes
Architectural Studies The Bartlett Faculty of the Built Environment	Architectural and Interdisciplinary Studies BSc	K102	3 years		Bloomsbury	
	Architectural and Interdisciplinary Studies with a Year Abroad BSc	K101	4 years	✈️	Bloomsbury	
Architecture The Bartlett Faculty of the Built Environment	Architecture BSc	K100	3 years	🏆	Bloomsbury	
	Architecture MSci	K103	5 years	📦 🏆	Bloomsbury	
Engineering and Architectural Design The Bartlett Faculty of the Built Environment	Engineering and Architectural Design MEng	KH11	4 years	🏆	Stratford	
Environment, Energy and Resources The Bartlett Faculty of the Built Environment	Sustainable Built Environments, Energy and Resources BSc	K300	3 years		Bloomsbury	
	Sustainable Built Environments, Energy and Resources MEng	K301	4 years		Bloomsbury	
Urban Planning The Bartlett Faculty of the Built Environment	Urban Planning and Real Estate BSc	K430	3 years	🏆	Bloomsbury	
	Urban Planning, Design and Management BSc	K421	3 years	🏆	Bloomsbury	
	Urban Studies BSc	K440	3 years		Bloomsbury	

Key: ✈️ Study abroad

📦 Placement or internship opportunity

🏆 Accreditation

See p87 for explanation of symbols

Arts and Sciences

UCL's liberal Arts and Sciences (BASc) degrees are unlike any other in the UK. They provide enormous flexibility, allowing you to create a bespoke programme incorporating arts, social sciences and science subjects.



You'll choose a major and a minor route, one from Cultures/Societies and one from Health and Environment/Sciences and Engineering. You'll also study a language, plus 'core courses' specially designed to help you make links between different subject areas and provide you with the tools necessary for interdisciplinary study. An optional internship at the end of the second year will help to prepare you for the world of work. Innovative methods of teaching and assessment include flipped lectures, vlogs, blogs and presentations.

➤ **First career destinations:**

- Business, research and administrative professionals
- Data analysts
- Further study (e.g. Master's programmes)
- Marketing associate professionals
- Programmers and software development professionals
- Sales accounts and business development managers



Entry requirements:



Programme-specific entry requirements (including contextual offers and other qualifications) can be found at: ucl.ac.uk/prospectus or scan the QR code.

	Programme	UCAS	Duration	Features	Location	Notes
Arts and Sciences Faculty of Arts and Humanities	Arts and Sciences BASc	Y000	3 years		Bloomsbury	
	Arts and Sciences with Study Abroad BASc	Y001	4 years	✈	Bloomsbury	
Key:	✈ Study abroad	🏠 Placement or internship opportunity	🏆 Accreditation	See p87 for explanation of symbols		

Routes with broad areas of study:

Students can select one major route from the list below. If you choose an Arts major route you will then choose a Science minor route, and vice versa if you choose a Science major route.

Art routes

Cultures

- Anthropology
- Creative Writing
- Cultural Studies
- Design and Visualisation
- Drawing Methodology
- Film and Documentary Film-making
- History of Art
- Languages
- Literature
- Philosophy

Societies

- Archaeology
- Economics
- Geography
- History
- International Relations
- Law
- Management
- Philosophy
- Political Economy
- Politics
- Sociology



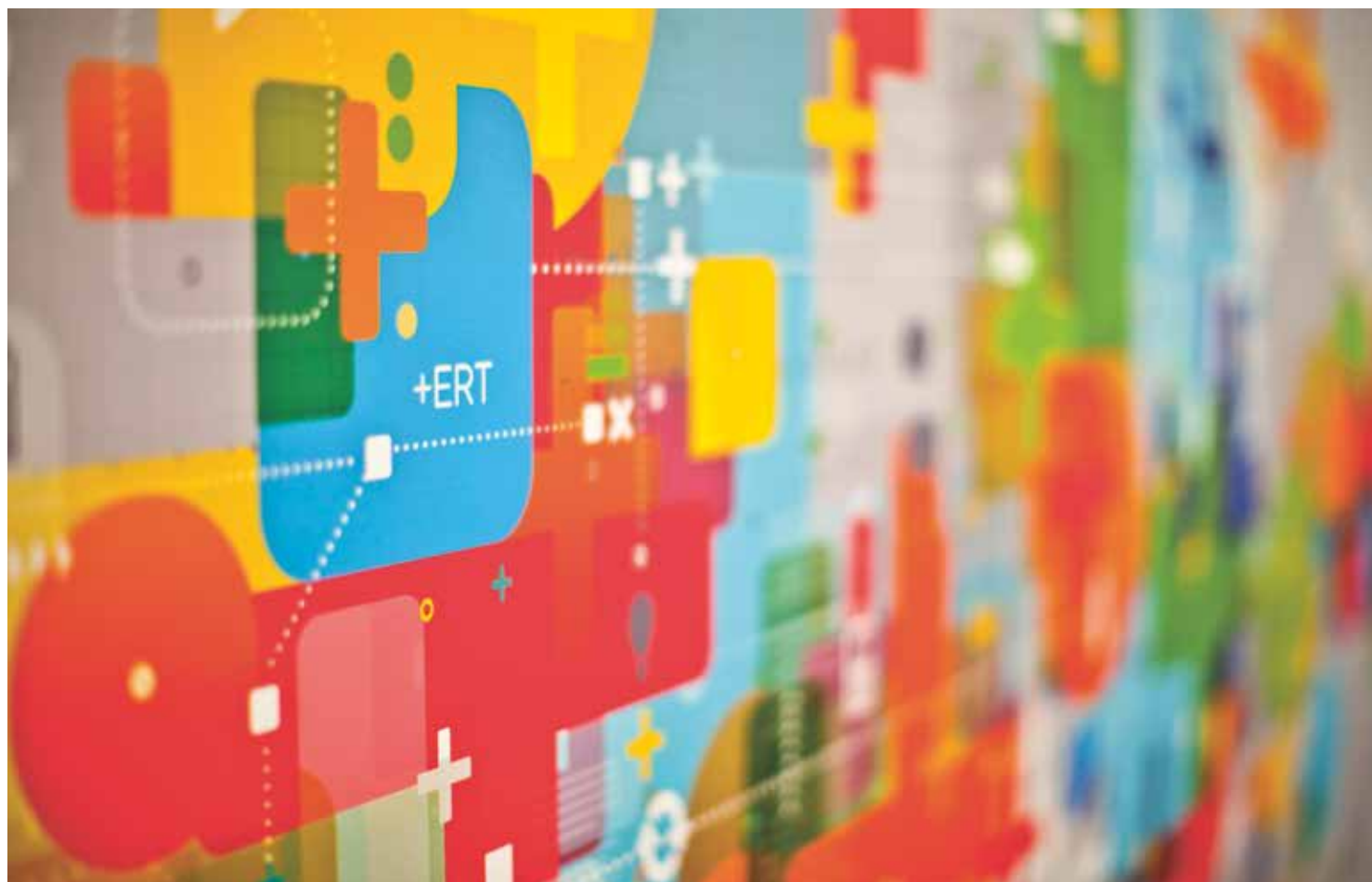
Science routes

Health and Environment

- Anthropology
- Biochemistry
- Biological Sciences
- Biomedicine
- Environmental Sciences
- Geography
- Geology
- Neuroscience
- Pharmacology
- Psychology

Sciences and Engineering

- Chemistry
- Computer Science
- Earth Sciences
- Economics
- Engineering
- Mathematics
- Physics
- Statistics



Biological and Life Sciences

Did you know?

UCL is ranked third in the UK for life sciences.

QS World University Rankings by Subject 2021

At UCL our research in the biological and life sciences spans an incredible breadth of scientific areas.



From understanding the functioning of the brain through to structural, molecular, cell and developmental biology, genetics, biochemistry, pharmacology, ecology and biodiversity, we are finding answers to some of the most important and urgent problems facing humans and other animals. All our academic researchers are active teachers and educators. You can choose one of our broad entry programmes such as Biological or Biomedical Sciences, or focus your studies in a specialist degree.

➤ **First career destinations:**

- Biochemists and biomedical scientists
- Business and related research professionals
- Finance and investment analysts and advisers
- Further study (e.g. MBBS/ Master's/PhD programmes)
- Management consultants and business analysts
- Teaching professionals

◊ **Related programmes can be found in:**

- Arts and Sciences [p58](#)
- Medicine and Allied Subjects [p81](#)
- Physical Sciences [p83](#)





Entry requirements:



Programme-specific entry requirements (including contextual offers and other qualifications) can be found at: 'ucl.ac.uk/prospectus' or scan the QR code.

	Programme	UCAS	Duration	Features	Location	Notes
Biochemistry Faculty of Life Sciences	Biochemistry BSc	C700	3 years		Bloomsbury	
	Biochemistry MSci	CC70	4 years		Bloomsbury	
Biological Sciences Faculty of Life Sciences	Biological Sciences BSc	C900	3 years		Bloomsbury	
	Biological Sciences MSci	C901	4 years		Bloomsbury	
Biomedical Sciences Faculty of Life Sciences	Biomedical Sciences BSc	B990	3 years		Bloomsbury	
Human Sciences Faculty of Life Sciences	Human Sciences BSc	BCL0	3 years		Bloomsbury	
	Human Sciences and Evolution MSci	BCL1	4 years		Bloomsbury	
Infection and Immunity Faculty of Medical Sciences	Infection and Immunity BSc	C550	3 years		Bloomsbury	
Neuroscience Faculty of Life Sciences	Neuroscience BSc	B140	3 years		Bloomsbury	
	Neuroscience MSci	B141	4 years		Bloomsbury	
Pharmacology Faculty of Life Sciences	Pharmacology BSc	B210	3 years		Bloomsbury	
	Pharmacology MSci	B211	4 years		Bloomsbury	

Key: Study abroad

Placement or internship opportunity

Accreditation

See p87 for explanation of symbols

Business and Management Studies

The UCL School of Management is developing entrepreneurial leaders for the next generation of data-driven, technology-intensive organisations.

Our programmes are developed in consultation with industry, with your future career in mind. On graduation, you will have strong leadership and communication skills and the ability to work flexibly, creatively and internationally in a range of areas, including banking and financial companies, consulting and tech. We offer exceptional support to our students in their search for a career, as well as a range of placement or internship options to give you hands-on experience to complement your study.

➤ **First career destinations:**

- Business sales executives
- Finance and investment analysts and advisers
- Information technology directors and professionals
- Management consultants and business analysts
- Programmers and software development professionals

◊ **Related programmes can be found in:**

- Computer Science [p63](#)
- Engineering [p67](#)



Entry requirements:



Programme-specific entry requirements (including contextual offers and other qualifications) can be found at: ucl.ac.uk/prospectus or scan the QR code.

	Programme	UCAS	Duration	Features	Location	Notes
Information Management for Business Faculty of Engineering Sciences	Information Management for Business BSc	P1N1	3 years		Bloomsbury	
Management Science Faculty of Engineering Sciences	Management Science BSc	N991	3 years		Bloomsbury	
	Management Science MSci	N990	4 years		Bloomsbury	

Key: ✈ Study abroad 📦 Placement or internship opportunity 🏆 Accreditation See [p87](#) for explanation of symbols

Computer Science

Studying computer science develops analytical and problem-solving skills fundamental to a huge range of careers in computing and beyond.



Our degrees, many taught by world-leading researchers, provide a solid foundation in an ever-changing field. Teaching combines theory and practical sessions, with an emphasis on solving real-world problems. We collaborate with global computer companies, as well as financial, health and other sectors, via our pioneering industrial collaboration programme UCL IXN, to give you industry project experience and develop your team-working skills throughout your degree.

➤ **First career destinations:**

- Cyber security professionals
- Finance and investment analysts and advisers
- Information technology directors and professionals
- IT business analysts, architects and system designers
- Programmers and software development professionals

🔗 **Related programmes can be found in:**

- Business and Management Studies [p62](#)
- Mathematics and Statistics [p78](#)

Entry requirements:



Programme-specific entry requirements (including contextual offers and other qualifications) can be found at: ucl.ac.uk/prospectus or scan the QR code.

	Programme	UCAS	Duration	Features	Location	Notes
Computer Science Faculty of Engineering Sciences	Computer Science BSc	G400	3 years		Bloomsbury	
	Computer Science MEng	G402	4 years		Bloomsbury	
	Mathematical Computation MEng	G430	4 years		Bloomsbury	
	Robotics and Artificial Intelligence MEng	H700	4 years		Stratford	

Key: Study abroad Placement or internship opportunity Accreditation See [p87](#) for explanation of symbols

Economics, Politics, Geography and Social Sciences

Degree programmes in this area examine individuals and society and the ways in which people behave and interact to influence the world around them.



From the origins and evolution of the human species to social structures in the modern day; from cultural, political and economic systems to the relationships between natural and social worlds – our wide-ranging and flexible degrees allow you to take a truly interdisciplinary look at these fascinating subjects, preparing you for a huge range of career options across an area that has never been more relevant.

➤ **First career destinations:**

- Chartered and certified accountants
- Finance and investment analysts and advisers
- Further study (e.g. Master's programmes)
- Management consultants and business analysts
- Marketing associate professionals
- Public relations professionals

◊ **Related programmes can be found in:**

- Arts and Sciences [p58](#)
- Engineering [p67](#)
- English and Comparative Literature [p69](#)
- Historical and Philosophical Studies [p71](#)
- Languages and Cultural Studies [p73](#)

Did you know?

UCL is ranked ninth in the world for geography.

QS World University Rankings by Subject 2021

Entry requirements:



Programme-specific entry requirements (including contextual offers and other qualifications) can be found at: ucl.ac.uk/prospectus or scan the QR code.

	Programme	UCAS	Duration	Features	Location	Notes
Anthropology Faculty of Social and Historical Sciences	Anthropology BSc	L602	3 years		Bloomsbury	
	Anthropology with a Year Abroad BSc	L603	4 years	✗	Bloomsbury	
Economics Faculty of Social and Historical Sciences	Economics BSc (Econ)	L100	3 years		Bloomsbury	
	Economics with a Placement Year BSc (Econ)	L102	4 years	📦	Bloomsbury	
	Economics with a Year Abroad BSc (Econ)	L101	4 years	✗	Bloomsbury	
Economics and Business School of Slavonic and East European Studies	Economics and Business with East European Studies BA	L1R7	3 years		Bloomsbury	
	Economics and Business with East European Studies with a Year Abroad BA	L1RR	4 years	✗	Bloomsbury	
European and International Social and Political Studies Faculty of Arts and Humanities	European Social and Political Studies BA	R990	4 years	✗	Bloomsbury	See the major subjects and major European languages you can study at: ucl.ac.uk/prospectus
	European Social and Political Studies: Dual Degree BA	R992	4 years	✗	Bloomsbury	See the major subjects and major European languages you can study at: ucl.ac.uk/prospectus
	International Social and Political Studies BA	LV01	4 years	✗	Bloomsbury	See the major subjects and major European languages you can study at: ucl.ac.uk/prospectus
Geography Faculty of Social and Historical Sciences	Geography BA	L700	3 years		Bloomsbury	
	Geography (International Programme) BA	L701	4 years	✗	Bloomsbury	
	Geography BSc	F800	3 years		Bloomsbury	
	Geography (International Programme) BSc	F801	4 years	✗	Bloomsbury	
	Economics and Geography BSc (Econ)	LL17	3 years		Bloomsbury	
Political Science Faculty of Social and Historical Sciences	Philosophy, Politics and Economics BSc	4V86	3 years		Bloomsbury	
	Politics and International Relations BSc	L251	3 years		Bloomsbury	
Politics and Sociology School of Slavonic and East European Studies	Politics, Sociology and East European Studies BA	LR27	3 years		Bloomsbury	
	Politics, Sociology and East European Studies with a Year Abroad BA	LRF7	4 years	✗	Bloomsbury	
Risk and Disaster Reduction Faculty of Mathematical and Physical Sciences	Global Humanitarian Studies BSc	LL80	3 years		Bloomsbury	
Crime and Security Science Faculty of Engineering Sciences	Crime and Security Science BSc	L311	3 years		Bloomsbury	
Social Sciences IOE, Faculty of Education and Society	Social Sciences BSc	L300	3 years		Bloomsbury	
	Social Sciences with Data Science BSc	LG33	3 years		Bloomsbury	
	Sociology BSc	L301	3 years		Bloomsbury	

Key: ✗ Study abroad

📦 Placement or internship opportunity

🏆 Accreditation

See p87 for explanation of symbols

Education

This degree prepares students to take a lead role in understanding and transforming society through the multifaceted lens of education.



Education is at the heart of global efforts to create more fair and equal societies. This interdisciplinary degree draws on sociology, philosophy, psychology and history, to provide our students with the critical tools necessary to reflect on education as a dynamic force at the centre of social and political change.

➤ **First career destinations:**

- Early education and childcare assistants
- Educational support assistants
- Further study (e.g. PGCE, Master's and PhD programmes)
- Primary and secondary education teaching professionals

👁️ **Related programmes can be found in:**

- Economics, Politics, Geography and Social Sciences [p64](#)
- Psychology and Language Sciences [p83](#)

Entry requirements:



Programme-specific entry requirements (including contextual offers and other qualifications) can be found at: ucl.ac.uk/prospectus or scan the QR code.

	Programme	UCAS	Duration	Features	Location	Notes
Education IOE, Faculty of Education and Society	Education Studies BA	X300	3 years		Bloomsbury	This degree does not offer a teaching qualification.

Key: ✈️ Study abroad 📁 Placement or internship opportunity 🏆 Accreditation See [p87](#) for explanation of symbols

Engineering

Engineers use insights and discoveries from across the academic spectrum to develop products and processes that truly change the world.

From vaccine manufacturing, designing ships and the distribution of sustainable energy, engineers solve problems for the good of humanity. Throughout your degree, you'll receive the fundamentals of engineering with a focus on cross-team working, real-world scenarios and developing professional skills. Whichever discipline you choose to specialise in, you'll be ready to make an impact in the world from the moment that you graduate.

➤ **First career destinations:**

- Engineering professionals
- Finance and investment analysts and advisers
- Further study (e.g. Master's programmes)
- Management consultants and business analysts
- Programmers and software development professionals

◊ **Related programmes can be found in:**

- Architecture, Construction and Planning [p56](#)
- Business and Management Studies [p62](#)
- Economics, Politics, Geography and Social Sciences [p64](#)



Did you know?

Charles Kao (Electronic and Electrical Engineering) won the Nobel Prize in 2009 for his work on low loss optical fibres and their application to global communication systems.



Entry requirements:



Programme-specific entry requirements (including contextual offers and other qualifications) can be found at: 'ucl.ac.uk/prospectus' or scan the QR code.

	Programme	UCAS	Duration	Features	Location	Notes
Biochemical Engineering Faculty of Engineering Sciences	Biochemical Engineering BEng	H811	3 years		Bloomsbury	
	Biochemical Engineering MEng	H813	4 years		Bloomsbury	
	Bioprocessing of New Medicines (Business and Management) BSc	CN72	3 years		Bloomsbury	
	Bioprocessing of New Medicines (Science and Engineering) BSc	B190	3 years		Bloomsbury	
Biomedical Engineering Faculty of Engineering Sciences	Biomedical Engineering BEng	HC60	3 years		Bloomsbury	
	Biomedical Engineering MEng	H160	4 years		Bloomsbury	
Chemical Engineering Faculty of Engineering Sciences	Chemical Engineering BEng	H800	3 years		Bloomsbury	
	Chemical Engineering MEng	H801	4 years		Bloomsbury	
Civil Engineering Faculty of Engineering Sciences	Civil Engineering BEng	H200	3 years		Bloomsbury	
	Civil Engineering MEng	H202	4 years		Bloomsbury	
Electronic and Electrical Engineering Faculty of Engineering Sciences	Electronic and Electrical Engineering BEng	H600	3 years		Bloomsbury	
	Electronic and Electrical Engineering MEng	H601	4 years		Bloomsbury	
Mechanical Engineering Faculty of Engineering Sciences	Mechanical Engineering BEng	H300	3 years		Bloomsbury	
	Mechanical Engineering MEng	H301	4 years		Bloomsbury	
	Mechanical Engineering with Business Finance MEng	H1NH	4 years		Bloomsbury	

Key: Study abroad

Placement or internship opportunity

Accreditation

See p87 for explanation of symbols

English and Comparative Literature

With one of the most enduring and respected English departments in the country and an exceptional range of modern and ancient languages on offer, UCL provides a comprehensive environment for the study of literature in English and other languages.



Our degrees require you to undertake careful critical and creative reading, reflection and writing. We aim to develop your analytical and interpretative skills, allowing you to develop a sensitivity to subtext and context, to be able to argue both sides of a case and to undertake research in order to present a well thought-through argument.

➤ **First career destinations:**

- Arts officers, producers and directors
- Actors, entertainers and presenters
- Further study (e.g. Master's programmes)
- Marketing associate professionals
- Newspaper and periodical journalists and reporters
- Public relations professionals

◊ **Related programmes can be found in:**

- Arts and Sciences [p58](#)
- Economics, Politics, Geography and Social Sciences [p64](#)
- Historical and Philosophical Studies [p71](#)
- Languages and Cultural Studies [p73](#)

Entry requirements:



Programme-specific entry requirements (including contextual offers and other qualifications) can be found at: 'ucl.ac.uk/prospectus' or scan the QR code.

	Programme	UCAS	Duration	Features	Location	Notes
Comparative Literature Faculty of Arts and Humanities	Comparative Literature BA	Q200	3 years		Bloomsbury	
	Comparative Literature with a Year Abroad BA	Q201	4 years	✗	Bloomsbury	
English Faculty of Arts and Humanities	English BA	Q300	3 years		Bloomsbury	

Key: ✗ Study abroad 📄 Placement or internship opportunity 🏆 Accreditation See [p87](#) for explanation of symbols

Fine Art and Art History

Whether you're a practitioner or a theorist, a creator or a critic, UCL offers outstanding staff, facilities and expertise across a variety of degree programmes in the prestigious Slade School of Fine Art and Department of History of Art.



A world-leading centre of scholarship in the history, practice and theory of art, our central location in London gives you easy access to national collections such as the Tate and National Gallery and a wealth of specialist and independent galleries and collections, not to mention UCL's own museums and collections, to inform and enrich your learning.

➤ First career destinations:

- Artists
- Arts officers, producers and directors
- Authors, writers and translators
- Further study (e.g. Master's programmes)
- Public relations professionals

◊ Related programmes can be found in:

- Arts and Sciences [p58](#)
- Economics, Politics, Geography and Social Sciences [p64](#)
- Historical and Philosophical Studies [p71](#)
- Languages and Cultural Studies [p73](#)

Entry requirements:



Programme-specific entry requirements (including contextual offers and other qualifications) can be found at: 'ucl.ac.uk/prospectus' or scan the QR code.

	Programme	UCAS	Duration	Features	Location	Notes
Fine Art (Slade School of Fine Art) Faculty of Arts and Humanities	Fine Art BFA	W101	3 years		Bloomsbury	
	Fine Art BA	W100	4 years		Bloomsbury	
History of Art Faculty of Social and Historical Sciences	History of Art BA	V350	3 years		Bloomsbury	
	History of Art, Materials and Technology BA	V3F2	3 years		Bloomsbury	

Key: ✈ Study abroad

📁 Placement or internship opportunity

🏆 Accreditation

See [p87](#) for explanation of symbols

Historical and Philosophical Studies

This wide-ranging subject area covers everything from the history of the world, the ideas of philosophers ancient and modern and practical and analytical techniques for discovering how our ancestors lived.

Students on these degrees develop strong research and analytical skills and a sensitivity to different cultures and ideas. They learn to communicate effectively verbally, visually and in writing to diverse audiences. Studying these subjects could lead to careers in government, international agencies and non-governmental organisations (NGOs), consultancy (economic, political risk, security, marketing), financial services, law, media, teaching, heritage and museums, as well as academia.

➤ First career destinations:

- Authors, writers and translators
- Business and related research professionals
- Marketing associate professionals
- Newspaper and periodical journalists and reporters
- Teaching professionals

◊ Related programmes can be found in:

- Arts and Sciences [p58](#)
- Economics, Politics, Geography and Social Sciences [p64](#)
- English and Comparative Literature [p69](#)
- Fine Art and Art History [p70](#)
- Languages and Cultural Studies [p73](#)
- Physical Sciences [p83](#)



Entry requirements:



Programme-specific entry requirements (including contextual offers and other qualifications) can be found at: ucl.ac.uk/prospectus or scan the QR code.

	Programme	UCAS	Duration	Features	Location	Notes
Archaeology Faculty of Social and Historical Sciences	Archaeology BA	F400	3 years	🏆	Bloomsbury	
	Archaeology BSc	F402	3 years	🏆	Bloomsbury	
	Archaeology and Anthropology BA	FL46	3 years	🏆	Bloomsbury	
	Archaeology of Egypt and Sudan BA	F424	3 years	🏆	Bloomsbury	
	Archaeology with a Placement Year BA	F403	4 years	🏆 🏠	Bloomsbury	
	Archaeology with a Year Abroad BA	F401	4 years	✈️ 🏆	Bloomsbury	
	Classical Archaeology and Classical Civilisation BA	VQ48	3 years	🏆	Bloomsbury	
	Heritage BA	F404	3 years	🏠	Stratford	

Key: ✈️ Study abroad

🏠 Placement or internship opportunity

🏆 Accreditation

See [p87](#) for explanation of symbols

Did you know?

UCL is currently ranked third in the world for archaeology.

QS World University Rankings by Subject 2021

Entry requirements:



Programme-specific entry requirements (including contextual offers and other qualifications) can be found at: ucl.ac.uk/prospectus or scan the QR code.

	Programme	UCAS	Duration	Features	Location	Notes
Classics and the Ancient World Faculty of Arts and Humanities	Ancient World BA	Q805	3 years		Bloomsbury	
	Ancient World with a Year Abroad BA	Q806	4 years	✗	Bloomsbury	
	Classics BA	Q800	3 years		Bloomsbury	
	Classics with Study Abroad BA	Q801	4 years	✗	Bloomsbury	
	Greek and English BA	Q7Q3	3 years		Bloomsbury	
	Greek with Latin BA	Q7Q6	3 years		Bloomsbury	
	Greek with Latin with Study Abroad BA	QRQ6	4 years	✗	Bloomsbury	
	Latin and English BA	Q6Q3	3 years		Bloomsbury	
	Latin with Greek BA	Q6Q7	3 years		Bloomsbury	
	Latin with Greek with Study Abroad BA	QPQ7	4 years	✗	Bloomsbury	
History Faculty of Social and Historical Sciences	Ancient History BA	V110	3 years		Bloomsbury	
	History BA	V100	3 years		Bloomsbury	
	History with a European Language BA	V1R9	4 years	✗	Bloomsbury	
	History with a Year Abroad BA	V104	4 years	✗	Bloomsbury	
History, Politics and Economics School of Slavonic and East European Studies	History, Politics and Economics BA	4P47	3 years		Bloomsbury	
The Americas Faculty of Social and Historical Sciences	History and Politics of the Americas BA	T7V1	3 years		Bloomsbury	
	History and Politics of the Americas with a Year Abroad BA	T7V2	4 years	✗	Bloomsbury	
Philosophy Faculty of Arts and Humanities	Philosophy BA	V500	3 years		Bloomsbury	
	Philosophy and Economics BA	VL51	3 years		Bloomsbury	
	Philosophy and History of Art BA	VV53	3 years		Bloomsbury	
Science and Technology Studies Faculty of Mathematical and Physical Sciences	History and Philosophy of Science BSc	V550	3 years		Bloomsbury	
	History and Philosophy of Science with Study Abroad BSc	V551	4 years	✗	Bloomsbury	
	Sociology and Politics of Science BSc	L391	3 years		Bloomsbury	
	Sociology and Politics of Science with Study Abroad BSc	L392	4 years	✗	Bloomsbury	

Key: ✗ Study abroad 📄 Placement or internship opportunity 🏆 Accreditation See p87 for explanation of symbols

Languages and Cultural Studies

UCL offers a remarkable range of languages and associated cultural studies, including art, film, history, literature and linguistics, philology, philosophy and politics.



A degree in this area equips students with skills much sought after by employers, such as the ability to speak, understand and write in a foreign language; intercultural understanding; translation and communication skills; and critical and analytical rigour. You may choose languages that you have studied before or start others from scratch, depending on the programme. The year abroad, integral to most degrees, allows you to immerse yourself in another culture at one of our prestigious overseas partner institutions.

➤ **First career destinations:**

- Authors, writers and translators
- Business and related research professionals
- Further study (e.g. Master's programmes)
- Marketing associate professionals
- Public relations professionals
- Teaching professionals

◊ **Related programmes can be found in:**

- Arts and Sciences [p58](#)
- Economics, Politics, Geography and Social Sciences [p64](#)
- English and Comparative Literature [p69](#)
- Fine Art and Art History [p70](#)
- Historical and Philosophical Studies [p71](#)

Did you know?

Languages offered to UCL students include Dutch, Finnish, Hindi, Hungarian, Italian, Mandarin, Norwegian, Yiddish and Ukrainian.



Did you know?

English war correspondent Clare Hollingworth, the first to report on the Nazi invasion of Poland that triggered the Second World War, attended UCL's School of Slavonic and Eastern European Studies in the 1930s.

	Bulgarian	Czech	Danish	Dutch	Finnish	French	German	Hebrew	Hungarian	Italian	Norwegian	Polish	Portuguese	Romanian	Russian	Serbian/Croatian	Spanish	Swedish	Ukrainian	Yiddish
Bulgarian		●	●	●	●	●	●	●	●	●	●	●	●	●	●	●	●	●	●	●
Czech	●		●	●	●	●	●	●	●	●	●	●	●	●	●	●	●	●	●	●
Danish	●	●		●	●	●	●	●	●	●		●	●	●	●	●	●		●	●
Dutch	●	●	●		●	●	●	●	●	●	●	●	●	●	●	●	●	●	●	●
Finnish	●	●	●	●		●	●	●	●	●	●	●	●	●	●	●	●	●	●	●
French	●	●	●	●	●		●	●	●	●	●	●	●	●	●	●	●	●	●	●
German	●	●	●	●	●	●		●	●	●	●	●	●	●	●	●	●	●	●	●
Hebrew	●	●	●	●	●	●	●		●	●	●	●	●	●	●	●	●	●	●	●
Hungarian	●	●	●	●	●	●	●	●		●	●	●	●	●	●	●	●	●	●	●
Italian	●	●	●	●	●	●	●	●	●		●	●	●	●	●	●	●	●	●	●
Norwegian	●	●		●	●	●	●	●	●	●		●	●	●	●	●	●		●	●
Polish	●	●	●	●	●	●	●	●	●	●	●		●	●	●	●	●	●	●	●
Portuguese	●	●	●	●	●	●	●	●	●	●	●	●		●	●	●	●	●	●	●
Romanian	●	●	●	●	●	●	●	●	●	●	●	●	●		●	●	●	●	●	●
Russian	●	●	●	●	●	●	●	●	●	●	●	●	●	●		●	●	●	●	●
Serbian/Croatian	●	●	●	●	●	●	●	●	●	●	●	●	●	●	●		●	●	●	●
Spanish	●	●	●	●	●	●	●	●	●	●	●	●	●	●	●	●		●	●	●
Swedish	●	●		●	●	●	●	●	●	●		●	●	●	●	●	●		●	●
Ukrainian	●	●	●	●	●	●	●	●	●	●	●	●	●	●	●	●	●	●		●
Yiddish	●	●	●	●	●	●	●	●	●	●	●	●		●	●	●	●	●	●	

Modern language combinations

This grid shows the range of languages that can be combined (subject to entry requirements and availability) to create a four-year degree programme. The final degree awarded on completion will reflect whatever combination you choose, for example, Bulgarian and French BA, Russian and Spanish BA.

You can combine the study of two languages on an equal basis; either two languages that you have already studied, or one language at beginner's level alongside one you already know.

French and Spanish are not available at beginner's level within these combinations. If you wish to study French or Spanish from beginner's level, you can apply for the Language and Culture BA (see below), where they are available as minor languages.

For most combinations, it is also possible to study two languages from beginner's level if you have an A level (or equivalent) in any modern foreign language.

If you wish to combine two Scandinavian languages, please see the Scandinavian Studies BA (see **p75**) or Icelandic BA (see **p75**).

For guidance on how to apply, as well as the UCAS code for each language combination, please see: ucl.ac.uk/prospectus.

Entry requirements:



Programme-specific entry requirements (including contextual offers and other qualifications) can be found at: ucl.ac.uk/prospectus or scan the QR code.

	Programme	UCAS	Duration	Features	Location	Notes
European Languages, Culture and Society Faculty of Arts and Humanities	Language and Culture BA	R991	4 years	✗	Bloomsbury	See the languages that can be combined at: ucl.ac.uk/prospectus
	Dutch BA	R911	4 years	✗	Bloomsbury	
	Dutch and English BA	R9Q3	4 years	✗	Bloomsbury	
	Dutch and History of Art BA	R9V3	4 years	✗	Bloomsbury	

Key: ✗ Study abroad 📄 Placement or internship opportunity 🏆 Accreditation See **p87** for explanation of symbols

Entry requirements:



Programme-specific entry requirements (including contextual offers and other qualifications) can be found at: ucl.ac.uk/prospectus or scan the QR code.

	Programme	UCAS	Duration	Features	Location	Notes
European Languages, Culture and Society Faculty of Arts and Humanities	Dutch and Latin BA	R9Q6	4 years	✗	Bloomsbury	
	Dutch and Management Studies BA	R9N2	4 years	✗	Bloomsbury	
	Dutch and Philosophy BA	R9V5	4 years	✗	Bloomsbury	
	Dutch with Film Studies BA	R9P3	4 years	✗	Bloomsbury	
	Dutch with Management Studies BA	R9N3	4 years	✗	Bloomsbury	
	French BA	R100	4 years	✗	Bloomsbury	
	French and an Asian or African Language BA	RT19	4 years	✗	Bloomsbury	
	French and English BA	R1Q3	4 years	✗	Bloomsbury	
	French and History of Art BA	R1V3	4 years	✗	Bloomsbury	
	French and Latin BA	R1Q6	4 years	✗	Bloomsbury	
	French and Philosophy BA	R1V5	4 years	✗	Bloomsbury	
	French with Film Studies BA	R1P3	4 years	✗	Bloomsbury	
	French with Management Studies BA	R1N2	4 years	✗	Bloomsbury	
	German BA	R200	4 years	✗	Bloomsbury	
	German and English BA	R2Q3	4 years	✗	Bloomsbury	
	German and History BA	RV21	4 years	✗	Bloomsbury	
	German and History of Art BA	R2V3	4 years	✗	Bloomsbury	
	German and Jewish Studies BA	R2V6	4 years	✗	Bloomsbury	
	German and Latin BA	R2Q6	4 years	✗	Bloomsbury	
	German and Philosophy BA	R2V5	4 years	✗	Bloomsbury	
	German with Film Studies BA	R2P3	4 years	✗	Bloomsbury	
	German with Management Studies BA	R2N2	4 years	✗	Bloomsbury	
	Icelandic BA	R690	4 years	✗	Bloomsbury	
	Italian BA	R300	4 years	✗	Bloomsbury	
	Italian and History of Art BA	R3V3	4 years	✗	Bloomsbury	
	Italian and Jewish Studies BA	R3V6	4 years	✗	Bloomsbury	
	Italian and Latin BA	R3Q6	4 years	✗	Bloomsbury	
	Italian and Management Studies BA	RN32	4 years	✗	Bloomsbury	
	Italian and Philosophy BA	R3V5	4 years	✗	Bloomsbury	
	Italian Studies: UCL–Venice Double Degree BA	R301	4 years	✗	Bloomsbury	
	Italian with Film Studies BA	R3P3	4 years	✗	Bloomsbury	
	Scandinavian Studies BA	R600	4 years	✗	Bloomsbury	
Scandinavian Studies and English BA	R6Q3	4 years	✗	Bloomsbury		
Scandinavian Studies and History BA	RV6C	4 years	✗	Bloomsbury		

Key: ✗ Study abroad

📄 Placement or internship opportunity

🏆 Accreditation

See p87 for explanation of symbols

Entry requirements:



Programme-specific entry requirements (including contextual offers and other qualifications) can be found at: 'ucl.ac.uk/prospectus' or scan the QR code.

	Programme	UCAS	Duration	Features	Location	Notes
European Languages, Culture and Society (cont) Faculty of Arts and Humanities	Scandinavian Studies and History of Art BA	R6V3	4 years	✗	Bloomsbury	
	Scandinavian Studies and Latin BA	R6Q6	4 years	✗	Bloomsbury	
	Scandinavian Studies with Film Studies BA	R6P3	4 years	✗	Bloomsbury	
	Scandinavian Studies with Management Studies BA	R6N2	4 years	✗	Bloomsbury	
	Spanish and History of Art BA	R4V3	4 years	✗	Bloomsbury	
	Spanish and Latin BA	R4Q6	4 years	✗	Bloomsbury	
	Spanish and Latin American Studies BA	R4T7	4 years	✗	Bloomsbury	
	Spanish and Philosophy BA	R4V5	4 years	✗	Bloomsbury	
	Spanish with Film Studies BA	R4P3	4 years	✗	Bloomsbury	
	Spanish with Management Studies BA	R4N2	4 years	✗	Bloomsbury	
	Viking and Old Norse Studies BA	R691	4 years	✗	Bloomsbury	
Hebrew and Jewish Studies Faculty of Arts and Humanities	Ancient Languages BA	0R8U	3 years		Bloomsbury	
	Ancient Languages with Year Abroad BA	RR8U	4 years	✗	Bloomsbury	
	Hebrew and Jewish Studies BA	Q481	3 years		Bloomsbury	This programme can also be studied part-time over 6 years
	Hebrew and Jewish Studies with Year Abroad BA	Q480	4 years	✗	Bloomsbury	
	History (Central and East European) and Jewish Studies with Year Abroad BA	VV23	4 years	✗	Bloomsbury	
Russian and East European Languages and Culture School of Slavonic and East European Studies	Bulgarian and East European Studies BA	R781	4 years	✗	Bloomsbury	
	Czech (with Slovak) and East European Studies BA	R782	4 years	✗	Bloomsbury	
	Finnish and East European Studies BA	RR67	4 years	✗	Bloomsbury	
	Hungarian and East European Studies BA	R783	4 years	✗	Bloomsbury	
	Polish and East European Studies BA	R784	4 years	✗	Bloomsbury	
	Romanian and East European Studies BA	R785	4 years	✗	Bloomsbury	
	Russian Studies BA	R700	4 years	✗	Bloomsbury	
	Russian and History BA	RV71	4 years	✗	Bloomsbury	
	Russian with an East European Language BA	R715	4 years	✗	Bloomsbury	
	Serbian/Croatian and East European Studies BA	R786	4 years	✗	Bloomsbury	
Ukrainian and East European Studies BA	R788	4 years	✗	Bloomsbury		

Key: ✗ Study abroad

📄 Placement or internship opportunity

🏆 Accreditation

See p87 for explanation of symbols

Law

UCL Laws is consistently ranked as one of the UK's top law schools, recognised for the quality of its teaching by both students and the legal profession.



Through lectures, seminars and small group tutorial teaching, you can explore the principles of law and understand its role in governing the relations between the individual, the state, and society. You will be encouraged to develop a critical understanding of how the law works and how it can be changed. Students benefit from specialist career support and can choose to participate in an array of activities, including mootings, pro-bono opportunities and an exciting and varied events programme, organised in conjunction with the Student Law Society.

➤ **First career destinations:**

- Authors, writers and translators
- Further study (e.g. Legal Practice Course, LLM)
- Legal professionals
- Managers and directors in retail and wholesale
- Solicitors and lawyers
- Teaching professionals

◊ **Related programmes can be found in:**

- Economics, Politics, Geography and Social Sciences [p64](#)

Entry requirements:



Programme-specific entry requirements (including contextual offers and other qualifications) can be found at: ucl.ac.uk/prospectus or scan the QR code.

	Programme	UCAS	Duration	Features	Location	Notes
Law Faculty of Laws	Law LLB	M100	3 years	🏆	Bloomsbury	
	Law with French Law LLB	M141	4 years	✈️ 🏆	Bloomsbury	
	Law with German Law LLB	M142	4 years	✈️ 🏆	Bloomsbury	
	Law with Hispanic Law LLB	M144	4 years	✈️ 🏆	Bloomsbury	
	English and German Law Dual Degree LLB	M146	4 years	✈️ 🏆	Bloomsbury	
	Bachelor of Law (UCL) and Bachelor of Law (HKU) LLB	M103	4 years	✈️ 🏆	Bloomsbury	

Key: ✈️ Study abroad

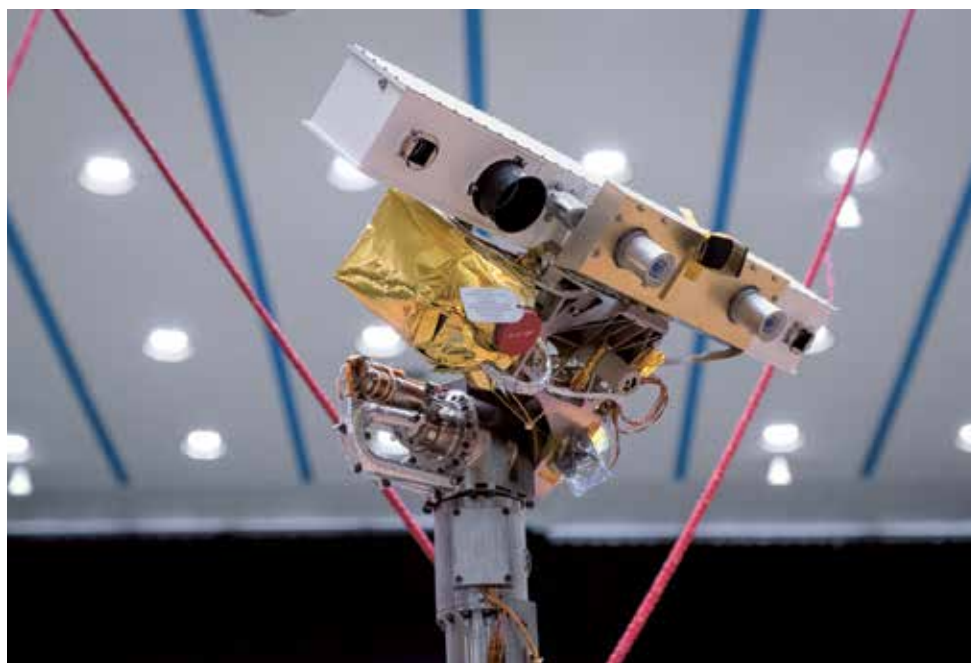
🏠 Placement or internship opportunity

🏆 Accreditation

See [p87](#) for explanation of symbols

Mathematics and Statistics

So many activities and industries – engineering and science, business and finance, data science and computing – depend, in large part, on mathematical and statistical insights.



Our degree programmes will encourage you to develop your imagination and critical thinking abilities. They will enhance your ability to think strategically and argue clearly. You will gain advanced quantitative and computing skills, as well as honing your logical, analytical and problem-solving abilities, giving you a wealth of options for your future career. Our graduates go into a diverse array of careers and a large proportion go onto further study in both theoretical and applied fields.

➤ **First career destinations:**

- Actuaries, economists and statisticians
- Brokers
- Chartered and certified accountants
- Finance and investment analysts and advisers
- Information technology professionals
- Programmers and software development professionals

◊ **Related programmes can be found in:**

- Arts and Sciences [p58](#)
- Computer Science [p63](#)
- Economics, Politics, Geography and Social Sciences [p64](#)
- Engineering [p67](#)
- Historical and Philosophical Studies [p71](#)
- Physical Sciences [p83](#)



Did you know?

The mathematical physicist Sir Roger Penrose, who was awarded the Nobel Prize for Physics in 2020, graduated from UCL with a first-class degree in Mathematics.

Entry requirements:



Programme-specific entry requirements (including contextual offers and other qualifications) can be found at: ucl.ac.uk/prospectus or scan the QR code.

	Programme	UCAS	Duration	Features	Location	Notes
Mathematics Faculty of Mathematical and Physical Sciences	Mathematics BSc	G100	3 years		Bloomsbury	
	Mathematics MSci	G107	4 years		Bloomsbury	
	Mathematics and Physics BSc	GF13	3 years		Bloomsbury	
	Mathematics and Physics MSci	GF1H	4 years		Bloomsbury	
	Mathematics and Statistical Science BSc	GG13	3 years		Bloomsbury	
	Mathematics and Statistical Science MSci	GGC3	4 years		Bloomsbury	
	Mathematics with Economics BSc	G1L1	3 years		Bloomsbury	
	Mathematics with Economics MSci	G1LC	4 years		Bloomsbury	
	Mathematics with Management Studies BSc	G1N2	3 years		Bloomsbury	
	Mathematics with Management Studies MSci	G1NF	4 years		Bloomsbury	
	Mathematics with Mathematical Physics BSc	G1F3	3 years		Bloomsbury	
	Mathematics with Mathematical Physics MSci	G1FH	4 years		Bloomsbury	
	Mathematics with Modern Languages BSc	G1T9	3 years		Bloomsbury	
Mathematics with Modern Languages MSci	G1TX	4 years		Bloomsbury		
Statistical Science Faculty of Mathematical and Physical Sciences	Data Science BSc	G303	3 years		Bloomsbury	
	Statistics BSc	G300	3 years		Bloomsbury	
	Statistical Science (International Programme) MSci	G305	4 years		Bloomsbury	
	Statistics and Management for Business BSc	GN32	3 years		Bloomsbury	
	Economics and Statistics BSc (Econ)	LG13	3 years		Bloomsbury	
	Statistics, Economics and Finance BSc	GLN0	3 years		Bloomsbury	
	Statistics, Economics and a Language BSc	GLR0	3 years		Bloomsbury	

Key: Study abroad

Placement or internship opportunity

Accreditation

See p87 for explanation of symbols

Media

UCL's Media degree sets the benchmark for ambitious future media professionals, combining the highest standards of academic and critical rigour with media practice and state-of-the-art professional skills and providing the opportunity to take up a work placement that draws on London's rich media environment.



You will benefit from world-class research in the media field, and will gain an understanding of the exhilarating possibilities of the digital era: how the media is made, how it is experienced, how it functions in your world, and how it offers you expressive opportunities. You will reach an advanced level in film-making or in digital game and interactive media, or both: two of the most important media forms for the UK economy. You will develop your own projects using brand-new, cutting-edge media studios and will exhibit your work in the end-of-degree show.

➤ First career destinations:

The first cohort of students admitted to the Media BA are not due to graduate until 2024. Therefore, no first career destinations for students on this programme are currently available.

◊ Related programmes can be found in:

- Economics, Politics, Geography and Social Sciences [p64](#)

Entry requirements:



Programme-specific entry requirements (including contextual offers and other qualifications) can be found at: 'ucl.ac.uk/prospectus' or scan the QR code.

	Programme	UCAS	Duration	Features	Location	Notes
Media IOE, Faculty of Education and Society	Media BA	P300	3 years		Bloomsbury / Stratford	

Key: ✈ Study abroad 📁 Placement or internship opportunity 🏆 Accreditation See [p87](#) for explanation of symbols

Medicine and Allied Subjects

Understanding human health, the causes of and contributors to disease and the treatment of disease, is fundamental to our society. It necessitates study across human biology, medicine and the social sciences, requires creativity and is intellectually demanding.

Our degrees provide a host of options for careers across medicine and the biomedical sciences, including life as a doctor, research scientist, audiologist, pharmacist or a variety of other fulfilling science- or medicine-related professions. Our graduates will have a robust and fundamentally transferable skill set of critical analysis, data interpretation, communication and independent thinking.

➤ **First career destinations:**

- Further study (e.g. Master's/PhD programmes)
- Generalist medical practitioners
- Nursing auxiliaries and assistants
- Pharmacists

◊ **Related programmes can be found in:**

- Arts and Sciences [p58](#)
- Biological and Life Sciences [p60](#)
- Engineering [p67](#)
- Physical Sciences [p83](#)
- Psychology and Language Sciences [p85](#)



Did you know?

Six former students and staff have been awarded Nobel Prizes. Medical advances have included the discovery of adrenaline, the hormone aldosterone, growth-stimulating vitamins, and auto-immune disease.



Entry requirements:



Programme-specific entry requirements (including contextual offers and other qualifications) can be found at: ucl.ac.uk/prospectus or scan the QR code.

	Programme	UCAS	Duration	Features	Location	Notes
Applied Medical Sciences Faculty of Medical Sciences	Applied Medical Sciences BSc	9N53	3 years		Bloomsbury	
Audiology Faculty of Brain Sciences	Audiology BSc	B610	3 years		Bloomsbury	
Cancer Faculty of Medical Sciences	Cancer Biomedicine BSc	B800	3 years		Bloomsbury	
Medical Innovation and Enterprise Faculty of Medical Sciences	Medical Innovation and Enterprise BSc	B980	3 years		Bloomsbury	
	Medical Innovation and Enterprise MSci	B981	4 years		Bloomsbury	
Medical Sciences and Engineering Faculty of Medical Sciences	Medical Sciences and Engineering BSc	AH11	3 years		Bloomsbury	
	Medical Sciences and Engineering MSci	HA11	4 years		Bloomsbury	
Medicine Faculty of Medical Sciences	Medicine MBBS BSc	A100	6 years		Bloomsbury	
Nutrition Faculty of Medical Sciences	Nutrition and Medical Sciences BSc	B400	3 years		Bloomsbury	
Pharmacy Faculty of Life Sciences	Pharmacy MPharm	B230	4 years		Bloomsbury	
	Pharmacy with Integrated Preregistration Training MPharm	B231	5 years		Bloomsbury	
Population Health Sciences Faculty of Population Health Sciences	Population Health Sciences BSc	170C	3 years		Bloomsbury	
	Population Health Sciences with Study Abroad BSc	171C	4 years		Bloomsbury	
Sport and Exercise Medical Sciences Faculty of Medical Sciences	Sport and Exercise Medical Sciences BSc	BC16	3 years		Stratford	This programme can also be studied part-time over 6 years

Key: Study abroad

Placement or internship opportunity

Accreditation

See p87 for explanation of symbols

Physical Sciences

This area covers the natural sciences linked to the study of non-living systems, forces and properties of the cosmos – from molecules to galaxy clusters, from the Earth’s core to the edge of the observable universe.



Study in these areas is renowned for developing highly sought-after analytical skills, the ability to undertake field and laboratory research and an understanding of mathematics and the principles and techniques of your chosen subject. A scientific training also equips you with practical transferable skills in rational argument and problem-solving, perfect for careers in areas such as research, design, development, computing, finance, planning and teaching.

➤ **First career destinations:**

- Actuaries, economists and statisticians
- Further study (e.g. Master’s/PhD programmes)
- Management consultants and business analysts
- Physical scientists
- Programmers and software development professionals
- Teaching professionals

◊ **Related programmes can be found in:**

- Computer Science [p63](#)
- Economics, Politics, Geography and Social Sciences [p64](#)
- Engineering [p67](#)
- Historical and Philosophical Studies [p71](#)
- Mathematics and Statistics [p78](#)

Did you know?

In 2019, UCL researchers detected water vapour in the atmosphere of a super-Earth with habitable temperatures in a world first.

Entry requirements:



Programme-specific entry requirements (including contextual offers and other qualifications) can be found at: ucl.ac.uk/prospectus or scan the QR code.

	Programme	UCAS	Duration	Features	Location	Notes
Chemistry Faculty of Mathematical and Physical Sciences	Chemistry BSc	F100	3 years		Bloomsbury	
	Chemistry MSci	F101	4 years		Bloomsbury	
	Chemistry (International Programme) MSci	F105	4 years		Bloomsbury	
	Chemistry with Management Studies BSc	F1N2	3 years		Bloomsbury	
	Chemistry with Management Studies MSci	F1NF	4 years		Bloomsbury	
	Chemistry with Mathematics BSc	F1G1	3 years		Bloomsbury	
	Chemistry with Mathematics MSci	F1GC	4 years		Bloomsbury	
Earth Sciences Faculty of Mathematical and Physical Sciences	Earth Sciences BSc	F603	3 years		Bloomsbury	
	Earth Sciences MSci	F604	4 years		Bloomsbury	
	Earth Sciences (International Programme) MSci	F605	4 years		Bloomsbury	
	Environmental Geoscience BSc	F644	3 years		Bloomsbury	
	Environmental Geoscience MSci	F645	4 years		Bloomsbury	
	Geology BSc	F600	3 years		Bloomsbury	
	Geology MSci	F601	4 years		Bloomsbury	
	Geophysics BSc	F660	3 years		Bloomsbury	
	Geophysics MSci	F663	4 years		Bloomsbury	
Medical Physics Faculty of Engineering Sciences	Physics with Medical Physics BSc	F351	3 years		Bloomsbury	
	Medical Physics MSci	F350	4 years		Bloomsbury	
Natural Sciences Faculty of Mathematical and Physical Sciences	Natural Sciences BSc	CFG0	3 years		Bloomsbury	See the major and minor streams you can study at: ucl.ac.uk/prospectus
	Natural Sciences MSci	FGC0	4 years		Bloomsbury	See the major and minor streams you can study at: ucl.ac.uk/prospectus
Physics and Astronomy Faculty of Mathematical and Physical Sciences	Astrophysics BSc	F510	3 years		Bloomsbury	
	Astrophysics MSci	F511	4 years		Bloomsbury	
	Physics BSc	F300	3 years		Bloomsbury	
	Physics MSci	F303	4 years		Bloomsbury	
	Theoretical Physics BSc	F340	3 years		Bloomsbury	
	Theoretical Physics MSci	F345	4 years		Bloomsbury	

Key: Study abroad

Placement or internship opportunity

Accreditation

See p87 for explanation of symbols

Psychology and Language Sciences

UCL is a world leader in research and teaching of mind, behaviour and language.

Our researchers cover a range of disciplines such as cognition, neuroscience, linguistics, education, communication, neurological disorders, mental health, phonetics and development across the human lifespan. Our degrees offer you the chance to acquire quantitative and qualitative skills by critically evaluating research data and conducting your own research studies. In addition to subject-specific skills you will also develop a range of highly transferable skills including problem-solving, communication, data analysis, writing for different audiences and critical thinking, that are essential for a range of graduate careers, which could include law, computing, healthcare, marketing, commerce and industry.

➤ **First career destinations:**

- Educational support assistants
- Further study (e.g. PGCE, Master's and PhD programmes)
- Marketing associate professionals
- Management consultants and business analysts
- Other psychologists

◊ **Related programmes can be found in:**

- Biological and Life Sciences [p60](#)
- Economics, Politics, Geography and Social Sciences [p64](#)
- Education [p66](#)
- Medicine and Allied Subjects [p81](#)





Did you know?

UCL is ranked top in Europe and second worldwide for psychology.

ShanghaiRanking Global Ranking of Academic Subjects 2021

Entry requirements:



Programme-specific entry requirements (including contextual offers and other qualifications) can be found at: ucl.ac.uk/prospectus or scan the QR code.

	Programme	UCAS	Duration	Features	Campus	Notes
Linguistics Faculty of Brain Sciences	Linguistics BA	Q100	3 years		Bloomsbury	
	Experimental Linguistics BSc	Q102	3 years		Bloomsbury	
Psychology Faculty of Brain Sciences	Psychology BSc	C800	3 years	🏆	Bloomsbury	
	Psychology MSci	C810	4 years	🏆	Bloomsbury	
Psychology and Language Sciences Faculty of Brain Sciences	Psychology and Language Sciences BSc	CB86	3 years	🏆 🏆	Bloomsbury	
	Psychology and Language Sciences MSci	CB87	4 years	🏆 🏆	Bloomsbury	
Psychology with Education IOE, Faculty of Education and Society	Psychology with Education BSc	C801	3 years	🏆	Bloomsbury	

Key: ✈ Study abroad 🏠 Placement or internship opportunity 🏆 Accreditation See p87 for explanation of symbols

Programme symbols

Throughout the programme pages we've used the following symbols:

➤ First career destinations

This shows a selection of first career destinations for programmes in the section, taken from the Graduate Outcomes survey carried out by the Higher Education Statistics Agency (HESA) for 2019. The survey looks at what UK/EU graduates have gone on to do approximately 15 months after graduating from UCL.

◊ Related programmes

Many of our degrees are interdisciplinary, working across two or more subject areas – so it's possible that you'll find programmes of interest in more than one section. We have indicated where there are overlaps so you can see the full choice of programmes available to you.

✂ Study abroad

Programmes with study abroad as an integral part of the curriculum – for example, programmes in the Languages section – are marked with this symbol. Please note that you may also choose to study abroad as an option within many other programmes too.

🏠 Placement or internship opportunity

This symbol indicates programmes where a placement or internship opportunity is an integral part of the curriculum – for example, the Pharmacy MPharm. Please note that many other programmes also offer optional placements or internships.

🎓 Accreditation

Many degrees are accredited by professional bodies, meaning that when you graduate you will either be eligible for membership, or will have fulfilled the academic requirements for membership, of the accrediting body. Our Law programmes are compliant with the QAA Subject Benchmark Statement for Law and contain the Foundations of Legal Knowledge. Completion of the Medicine MBBS BSc enables provisional General Medical Council (GMC) registration.

Please note:

Location is where the majority of teaching for each programme is delivered.

Choosing your university is a big decision

We know that the process can be daunting, so we've tried to make the information on the following pages as straightforward as possible. We've also provided details of where you can find more help and advice.

Entry requirements



Scan the QR code, or search: **'UCL entry requirements'** to find out more.

We're seeking the brightest minds to join the UCL community and you must satisfy our specific entry requirements to study here.

For A levels, UCL typically makes offers in the range of A*A*A-ABB. For all programmes, you must have at least two A levels from our list of preferred subjects.

Please note that we do not consider General Studies or Critical Thinking to meet the entry requirements for any of our programmes.

As well as A levels, we accept a wide range of other UK and overseas qualifications, for which requirements will be listed under each individual programme.

Please note that for some programmes there may be additional admissions tests that will need to be taken. These will be indicated on the programme page in the online Prospectus.

In addition, if you are not a national of a majority English speaking country (as defined by the UK Visas and Immigration, Home Office) you must provide recent evidence of your English proficiency. The level required for each programme is shown on the relevant page in the online Prospectus.

For more information about entry requirements (including GCSE requirements which vary across undergraduate programmes), accepted qualifications and English language requirements, see the QR code above.

Access UCL – contextual offer

As part of our commitment to increasing participation from underrepresented groups, students may be eligible for a contextual offer as part of the Access UCL scheme. The contextual offer will be a lower offer than the standard UCL offer and is listed under each programme on the online Prospectus page. For more information on eligibility criteria for the Access UCL scheme, visit: ucl.ac.uk/prospectus

How to apply



Scan the QR code, or search: **'UCL undergraduate application'** to find out more.

If you're inspired by what we offer, and meet our entry requirements, we look forward to reading your application. Here's what you need to do.

1. Find your degree programme

It's important to research the degree programmes and universities that interest you before you make your choices. You can find out detailed information about each of our programmes by visiting ucl.ac.uk/prospectus. You could also attend one of our Open Days, see ucl.ac.uk/openday.

2. Apply online

Applications open
1 September 2022

Undergraduate applications to UCL are made through UCAS. Our UCAS code is **UCL U80**; there is no campus code. Advice on completing your application, including fees, is on the UCAS website: ucas.com

For more information about the application process including deadlines, please see the QR code above.

3. Considering your application

For more information on how we assess applications and when we will respond, please see the QR code above.

The selection criteria may vary across programmes at UCL. Each programme page on the online prospectus will have specific selection criteria including information about interviews, selection events or open days (if relevant).

Student selection

We strive to admit the academically brightest students to UCL, regardless of background – those who are enthusiastic and passionate about learning, and who will make a positive contribution to university life and gain the most from their years of study here. In fact, UCL was founded to open up education in England for the first time to those who had been excluded from it. That commitment remains as strong today as it was back in 1826.

Our Equality, Diversity and Inclusion Policy and Strategy underlies every aspect of our student selection process. We want to admit excellent students who are likely to complete their degree programme successfully and derive benefit from it, regardless of age, disability, ethnic origin, gender identity, marital status, sex, sexual orientation, number of dependants and religious or political beliefs. We positively encourage and welcome applications from members of underrepresented groups at UCL.

UCL's Access and Participation Plan (ucl.ac.uk/access) outlines our commitment to widening participation at UCL, including the Access UCL scheme – see QR code above.

Visa requirements

If you think you may require a visa to study in the UK, you should visit: ucl.ac.uk/students/immigration-and-visas. This provides more information about the types of visa, application processes and our requirements.

Fees



Scan the QR code,
or search: '[UCL fees](#)'
to find out more.

Our fees can vary depending on the modules you choose and your country of origin. Please take the time to familiarise yourself with the information below.

Tuition fees

UCL's annual tuition fee covers all elements of your tuition, registration and examination (field courses are not included). However, optional modules taken elsewhere in the University of London may attract an additional fee. Fees for accommodation are charged separately. UCL offers several 'Dual Degree' programmes where students spend half of their degree studying at UCL and the other half at a university overseas (these are distinct from Year Abroad or International programmes). In these cases, fees are payable to UCL for the time spent studying at UCL, and to the other host university for the time spent there. More details of these can be found at: ucl.ac.uk/prospectus

Please note that the information on this page applies to the 2022/23 academic year. Fees for 2023 entry will be published on the UCL Students website (ucl.ac.uk/students/fees-and-funding) as soon as they are available.

How tuition fees are classified

The level of fee will depend upon whether you're classed as a UK, Overseas or Islands student. You may already know into which category you fall but this will be confirmed if you are offered a place at UCL.

Tuition fees for UK students

UK undergraduate fees are currently (February 2022) set at £9,250 for UK students for the first year of study. Fees for UK undergraduates may be subject to increase for the year commencing 2023 and for each year of study thereafter. UCL reserves the right to increase its fees in line with government policy (including on an annual basis during the programme).

You are not required to pay upfront fees. You can apply to the Student Loans Company for a Tuition Fee Loan and your fees will be paid directly to UCL on your behalf. Loan repayments are only made once you have left university and are earning over £27,295 per year. Please see gov.uk/student-finance for further information.

Tuition fees for overseas students

For 2022 entry, UCL's tuition fees for overseas students range between £22,200 and £38,000 per year. The vast majority of our undergraduate programmes charge a fixed fee every year for overseas students (Medicine MBBS is an exception) and these won't change during your time with us, so you know upfront exactly how much you'll need to pay.

Note for EU students: UK withdrawal from the European Union (EU)

The UK has now formally left the EU. Students from the EU, EEA and Switzerland who start their programme of study in 2022 or later will no longer be eligible for the UK (Home) fee status and will pay fees at the overseas rate.

Please visit our dedicated website ucl.ac.uk/brexit to read more about UCL and Brexit.

Sources of funding



Scan the QR code,
or search: '[UCL funding](#)'
to find out more.

University is an investment in your future. Depending on your circumstances, there are many sources of financial support to make higher education more accessible.

Sources of funding for UK students

- **Maintenance Loan from the Student Loans Company** – see [gov.uk/student-finance](https://www.gov.uk/student-finance)

For students from Scotland, Wales or Northern Ireland, there is a different process and funding package available:

Scotland – see [saas.gov.uk](https://www.saas.gov.uk)

Wales – see [studentfinancewales.co.uk](https://www.studentfinancewales.co.uk)

Northern Ireland – see [studentfinancenir.co.uk](https://www.studentfinancenir.co.uk)

If you live in the Channel Islands or Isle of Man please contact your education authority for funding information.

- **UCL Undergraduate Bursary** – this is a means-tested bursary of up to £2,500 per year – see [ucl.ac.uk/scholarships](https://www.ucl.ac.uk/scholarships)
- **UCL Scholarships** – we have a range of schemes available each year based on financial need and/or academic merit – see [ucl.ac.uk/scholarships](https://www.ucl.ac.uk/scholarships)
- **Care Leaver and Estranged Student Bursary**, aimed at students who are care experienced or estranged from parent(s) – see [ucl.ac.uk/care-leavers](https://www.ucl.ac.uk/care-leavers)
- **Disabled Students' Allowance** – see [gov.uk/disabled-students-allowances-dsas](https://www.gov.uk/disabled-students-allowances-dsas)
- **Students with dependants** – see [gov.uk/student-finance/extra-help](https://www.gov.uk/student-finance/extra-help)
- **Employment** – there are plenty of opportunities to find varied and reasonably paid part-time work in London. The Students' Union website lists opportunities at [studentsunionucl.org/human-resources/jobshop](https://www.studentsunionucl.org/human-resources/jobshop)

Note for EU students: UK withdrawal from the European Union (EU)

The UK has now formally left the EU. Students covered by the EU Withdrawal Agreement may be able to access Tuition Fee Loans and Maintenance loans, depending on their status under the EU Settlement Scheme and their residency. See [ucl.ac.uk/scholarships](https://www.ucl.ac.uk/scholarships) for more details.

Sources of funding for overseas students

- **UCL Scholarships** – we have a range of schemes available – see [ucl.ac.uk/scholarships](https://www.ucl.ac.uk/scholarships)
- **External funding** – external (non-UCL) organisations also offer funding support – see [ucl.ac.uk/scholarships/external-funding](https://www.ucl.ac.uk/scholarships/external-funding) for examples.
- **Employment** – international students who require a visa or prior entry clearance are normally permitted to work for up to 20 hours per week during term time and full-time in the vacations. This restriction applies to voluntary as well as to paid employment – see [ukcisa.org.uk](https://www.ukcisa.org.uk) for more information.

If you have financial problems during your degree

The UCL Financial Assistance Fund may be able to help if you experience unexpected financial hardship during your degree; there is also an emergency loan scheme for students whose funding has been delayed. Eligibility requirements apply – see [ucl.ac.uk/students/funding/financial-support](https://www.ucl.ac.uk/students/funding/financial-support) for more details.

For further information

A good starting point for further information about student finance is [gov.uk/student-finance](https://www.gov.uk/student-finance) if you're a UK student, or your local Ministry of Education if you're an overseas student.

You can find out more about UCL fees and funding – see [ucl.ac.uk/students/fees-and-funding](https://www.ucl.ac.uk/students/fees-and-funding)

Your living expenses

Living costs may vary greatly from student to student, depending on individual needs and lifestyle. To guide you, UCL has estimations of how much students might spend on living costs.

For an undergraduate student living in a UCL Hall of Residence this is likely to be around £312 per week, based on a 39 week year – see [ucl.ac.uk/scholarships/how-much-does-it-cost-study-ucl](https://www.ucl.ac.uk/scholarships/how-much-does-it-cost-study-ucl)

Additional costs on some degree programmes

Students on certain degree programmes will incur costs in addition to their tuition fees; for example, for materials or books, or costs related to carrying out fieldwork. For full details about possible additional expenses, contact the department that provides the programme.

Accommodation



Scan the QR code, search '[UCL accommodation](#)' or see [p28–29](#) for more information.

Food and accommodation are one of the biggest costs of studying at university, so you need to choose your options carefully to suit your needs and budget.

All the information you need about the application process and details of all our accommodation can be found online (see QR code). The majority of the accommodation available is managed by UCL. Some accommodation is managed by partners such as the University of London or private operators.

What you get and what it might cost

Our accommodation fees include room rental and use of communal areas; maintenance within your Hall; cleaning of shared bathrooms, kitchens and communal areas; utility charges, including Wi-Fi; basic contents insurance; and 24/7 support – as well as vibrant UCL communities led by residents. The fees you pay vary depending on location and facilities.

Each of our sites has experienced and knowledgeable managers, hall teams and student residence advisors (SRAs) available to help you throughout your time in UCL accommodation. Their responsibilities range from wellbeing to out-of-hours support, ensuring you have an exceptional student experience. All of our accommodation has secure access, as your security and wellbeing is our main priority.

As a guide, for the 2021/22 session fee ranges were as follows:

UCL catered accommodation

- Single room (not en-suite):
£193.06–£252.84 per week

UCL self-catered accommodation

- Single room (not en-suite):
£156.03–£233.38 per week
- Single room (en-suite):
£219.52–£300.30 per week

Please note that twin rooms are currently unavailable owing to the COVID-19 pandemic. We will offer these rooms for rental again once it is safe to do so.

Fees for UCL accommodation are updated yearly and appear online as soon as they are set. Fees for halls operated by the University of London are set in the spring of the year of entry.

Find out more at ucl.ac.uk/accommodation or halls.london.ac.uk/accommodation

After your first year

Most students look for privately rented accommodation in year two and beyond, often sharing with friends.

UCL partners with other providers such as University of London and private operators, that offer alternative accommodation available for returning students, the majority under four miles from our Bloomsbury campus. These rooms are offered at a special rate for UCL students, and so prices for the same properties may be higher on other websites.

Contact us at accommodation@ucl.ac.uk or facebook.com/uclaccommodation

Degree programme index

A

Ancient History BA V110 **72**
Ancient Languages BA 0R8U **76**
Ancient Languages with a Year Abroad BA RR8U **76**
Ancient World BA Q805 **72**
Ancient World with a Year Abroad BA Q806 **72**
Anthropology BSc L602 **65**
Anthropology combined with Archaeology **71**
Anthropology with a Year Abroad BSc L603 **65**
Applied Medical Sciences BSc 9N53 **82**
Archaeology BA F400 **71**
Archaeology BSc F402 **71**
Archaeology and Anthropology BA FL46 **71**
Archaeology of Egypt and Sudan BA F424 **71**
Archaeology with a Placement Year BA F403 **71**
Archaeology with a Year Abroad BA F401 **71**
Architectural and Interdisciplinary Studies BSc K102 **57**
Architectural and Interdisciplinary Studies with a Year Abroad BSc K101 **57**
Architecture BSc K100 **57**
Architecture MSc K103 **57**
Arts and Sciences BASc Y000 **58**
Arts and Sciences with Study Abroad BASc Y001 **58**
Astrophysics BSc F510 **84**
Astrophysics MSc F511 **84**
Audiology BSc B610 **84**

B

Bachelor of Law (UCL) and Bachelor of Law (HKU) LLB M103 **77**
Biochemical Engineering BEng H811 **68**
Biochemical Engineering MEng H813 **68**
Biochemistry BSc C700 **61**
Biochemistry MSc CC70 **61**
Biomedical Engineering BEng HC60 **68**
Biomedical Engineering MEng H160 **68**
Biological Sciences BSc C900 **61**
Biological Sciences MSc C901 **61**
Biomedical Sciences BSc B990 **61**
Bioprocessing of New Medicines (Business and Management) BSc CN72 **68**
Bioprocessing of New Medicines (Science and Engineering) BSc B190 **68**
Bulgarian combined with another language or discipline **74, 76**

C

Cancer Biomedicine BSc B800 **82**
Chemical Engineering BEng H800 **68**
Chemical Engineering MEng H801 **68**
Chemistry BSc F100 **84**
Chemistry MSc F101 **84**
Chemistry (International Programme) MSc F105 **84**
Chemistry with Management Studies BSc F1N2 **84**
Chemistry with Management Studies MSc F1NF **84**
Chemistry with Mathematics BSc F1G1 **84**
Chemistry with Mathematics MSc F1GC **84**
Civil Engineering BEng H200 **68**
Civil Engineering MEng H202 **68**
Classical Archaeology and Classical Civilisation BA VQ48 **71**
Classics BA Q800 **72**
Classics with Study Abroad BA Q801 **72**
Comparative Literature BA Q200 **69**
Comparative Literature with a Year Abroad BA Q201 **69**
Computer Science BSc G400 **63**
Computer Science MEng G402 **63**
Crime and Security Science BSc L311 **65**
Czech combined with another language or discipline **74, 76**

D

Danish combined with another language **74**
Data Science BSc G303 **79**
Dutch BA R911 **74**
Dutch combined with another language or discipline **74, 75**

E

Earth Sciences BSc F603 **84**
Earth Sciences MSc F604 **84**
Earth Sciences (International Programme) MSc F605 **84**
Economics BSc (Econ) L100 **65**
Economics with a Placement Year BSc (Econ) L102 **65**
Economics with a Year Abroad BSc (Econ) L101 **65**
Economics and Business with East European Studies BA L1R7 **65**
Economics and Business with East European Studies with a Year Abroad BA L1RR **65**
Economics and Geography BSc (Econ) LL17 **65**

Economics and Statistics BSc (Econ) LG13 **79**
Education Studies BA X300 **66**
Electronic and Electrical Engineering BEng H600 **68**
Electronic and Electrical Engineering MEng H601 **67**
Engineering and Architectural Design MEng KH11 **57**
English BA Q300 **69**
English and German Law Dual Degree LLB M146 **77**
Environmental Geoscience BSc F644 **84**
Environmental Geoscience MSc F645 **84**
European Social and Political Studies BA R990 **65**
European Social and Political Studies: Dual Degree BA R992 **65**
Experimental Linguistics BSc Q100 **86**

F

Film Studies combined with a language **75, 76**
Fine Art BA W100 **70**
Fine Art BFA W101 **70**
Finnish combined with another language or discipline **74, 76**
French BA R100 **75**
French and an Asian or African Language BA RT19 **75**
French combined with another language or discipline **74, 75**

G

Geography BA L700 **65**
Geography BSc F800 **65**
Geography (International Programme) BA L701 **65**
Geography (International Programme) BSc F801 **65**
Geology BSc F600 **84**
Geology MSc F601 **84**
Geophysics BSc F660 **84**
Geophysics MSc F663 **84**
German BA R200 **75**
German combined with a language or another discipline **74, 75**
Global Humanitarian Studies BSc LL80 **65**
Greek and English BA Q7Q3 **72**
Greek with Latin Q7Q6 **72**
Greek with Latin with Study Abroad BA Q7Q6 **72**

H

Hebrew and Jewish Studies BA Q481 **76**
Hebrew and Jewish Studies with a Year Abroad BA Q480 **76**

Degree programme index

Hebrew combined with another language or discipline **74, 76**

Heritage BA F404 **71**

History BA V100 **72**

History (Central and East European) and Jewish Studies with Year Abroad BA VV23 **76**

History and Philosophy of Science BSc V550 **72**

History and Philosophy of Science with Study Abroad BSc V551 **72**

History and Politics of the Americas BA T7V1 **72**

History and Politics of the Americas with a Year Abroad BA T7V2 **72**

History, Politics and Economics BA 4P47 **72**

History of Art BA V350 **70**

History of Art, Materials and Technology BA V3F2 **70**

History of Art combined with a language or another discipline **75, 76**

History with a European Language BA V1R9 **72**

History with a Year Abroad BA V104 **72**

Human Sciences BSc BCL0 **61**

Human Sciences and Evolution MSc BCL1 **61**

Hungarian combined with another language or discipline **74, 76**

I

Icelandic BA R690 **75**

Infection and Immunity BSc C550 **61**

Information Management for Business BSc P1N1 **62**

International Social and Political Studies BA LV01 **65**

Italian BA R300 **75**

Italian combined with another language or discipline **74, 75**

Italian Studies: UCL–Venice Double Degree BA R301 **75**

J

Jewish Studies combined with another language or discipline **75, 76**

L

Language and Culture BA R991 **74**

Latin and English BA Q6Q3 **72**

Latin with Greek BA Q6Q7 **72**

Latin with Greek with Study Abroad BA QPQ7 **72**

Latin combined with another language **74, 75, 76**

Law LLB M100 **77**

Law with French Law LLB M141 **77**

Law with German Law LLB M142 **77**

Law with Hispanic Law M144 **77**

Linguistics BA Q100 **86**

M

Management Science BSc N991 **62**

Management Science MSc N990 **62**

Management Studies combined with a language **75, 76**

Mathematical Computation MEng G430 **63**

Mathematics BSc G100 **79**

Mathematics MSc G107 **79**

Mathematics and Physics BSc GF13 **79**

Mathematics and Physics MSc GF1H **79**

Mathematics and Statistical Science BSc GG13 **79**

Mathematics and Statistical Science MSc GGC3 **79**

Mathematics with Economics BSc G1L1 **79**

Mathematics with Economics MSc G1LC **79**

Mathematics with Management Studies BSc G1N2 **79**

Mathematics with Management Studies MSc G1NF **79**

Mathematics with Mathematical Physics BSc G1F3 **79**

Mathematics with Mathematical Physics MSc G1FH **79**

Mathematics with Modern Languages BSc G1T9 **79**

Mathematics with Modern Languages MSc G1TX **79**

Mechanical Engineering BEng H300 **68**

Mechanical Engineering MEng H301 **68**

Mechanical Engineering with Business Finance MEng H1NH **68**

Media BA P300 **80**

Medical Physics MSc F350 **84**

Medical Innovation and Enterprise BSc B980 **82**

Medical Innovation and Enterprise MSc B981 **82**

Medical Sciences and Engineering BSc AH11 **82**

Medical Sciences and Engineering MSc HA11 **82**

Medicine MBBS BSc A100 **82**

N

Natural Sciences BSc CFG0 **84**

Natural Sciences MSc FGC0 **84**

Neuroscience BSc B140 **61**

Neuroscience MSc B141 **61**

Norwegian combined with another language **74**

Nutrition and Medical Sciences BSc B400 **82**

P

Pharmacology BSc B210 **61**

Pharmacology MSc B211 **61**

Pharmacy MPharm B230 **82**

Pharmacy with Integrated Preregistration Training MPharm B231 **82**

Philosophy BA V500 **72**

Philosophy combined with a language **75, 76**

Philosophy and Economics BA VL51 **72**

Philosophy and History of Art BA VV53 **72**

Philosophy, Politics and Economics BSc 4V86 **65**

Physics BSc F300 **84**

Physics MSc F303 **84**

Physics combined with Mathematics **79**

Physics with Medical Physics BSc F351 **84**

Polish combined with another language or discipline **74, 75**

Politics and International Relations BSc L251 **65**

Politics, Sociology and East European Studies BA LR27 **65**

Politics, Sociology and East European Studies with a Year Abroad BA LRF7 **65**

Population Health Sciences BSc 170C **82**

Population Health Sciences with Study Abroad BSc 171C **82**

Portuguese combined with another language **74**

Psychology BSc C800 **86**

Psychology MSc C810 **86**

Psychology and Language Sciences BSc CB86 **86**

Psychology and Language Sciences MSc CB87 **86**

Psychology with Education BSc C801 **86**

R

Robotics and Artificial Intelligence MEng H700 **63**

Romanian combined with another language or discipline **74, 76**

Russian Studies BA R700 **76**

Russian combined with another language or discipline **74, 76**

S

Scandinavian Studies BA R600 **75**

Scandinavian Studies with another discipline **75, 76**

Serbian/Croatian combined with another language or discipline **74, 76**

Social Sciences BSc L300 **65**

Social Sciences with Data Science BSc LG33 **65**

General index

Sociology BSc L301 **65**
Sociology and Politics of Science BSc L391 **72**
Sociology and Politics of Science with
Study Abroad BSc L392 **72**
Spanish combined with another language or
discipline **74, 76**
Sport and Exercise Medical Sciences BSc BC16 **82**
Statistical Science (International Programme)
MSci G305 **79**
Statistics BSc G300 **79**
Statistics and Management for Business
BSc GN32 **79**
Statistics, Economics and Finance BSc GLN0 **79**
Statistics, Economics and a Language BSc GLR0 **79**
Sustainable Built Environments, Energy and
Resources BSc K300 **57**
Sustainable Built Environments, Energy and
Resources MEng K301 **57**
Swedish combined with another language **74**

T

Theoretical Physics BSc F340 **84**
Theoretical Physics MSci F345 **84**

U

Ukrainian combined with another language
or discipline **74, 76**
Urban Planning and Real Estate BSc K430 **57**
Urban Planning, Design and Management BSc
K421 **57**
Urban Studies BSc K440 **57**

V

Viking and Old Norse Studies BA R691 **76**

Y

Yiddish combined with another language **74**

A

Accommodation **26–29, 92**
Additional admissions tests **88**
Alumni **32–33**
Applying **89**

B

Bursaries **07, 91**

C

Campus and facilities **16, 23**
Care leavers **91**
Careers **37**
Clubs and societies **05, 30–31**
Contextual offers **88–89**

D

Degree programmes **52–87**
Disabled Students' Allowance **91**
Disclaimer **inside back cover**

E

East Bank **25**
English language requirements **88**
Entrepreneurship **15**
Entry requirements **88**
Equalities and diversity **89**

F

Faculties **38–51**
Fees **90**
Financial support and funding **91**

I

International students **88–91**

K

Knowledge Quarter **25–27**

L

Libraries **inside front cover, 16, 25–27, 40, 50**
London **inside front cover, 05, 09, 24–27, 29, 96**

M

Maps **inside front cover, 26–27**
Museums and galleries **inside front cover, 24–27**

N

Nobel Prize winners **05, 10–11, 33, 46, 67, 79, 82**

O

Open Days **89, 96**

P

Personal Tutors **35**

R

Research Excellence Framework (REF) **05**

S

Scholarships **91**
Selection procedure **89**
Social activities **30–31, 33**
Sports **30–31**
Students' Union UCL **30–31, 91**
Support services **15, 35, 91–93**
Sustainability **05, 16, 22–23**

T

Transition Programme **35**
Travel and directions **26–27, 96**

U

UCAS – applying through **89**

V

Visits **96**

W

Widening participation **89, 96**

Discover UCL for yourself

There's always something exciting going on at UCL and our central London location makes finding us easy. We look forward to meeting you.

Come to one of our Open Days

Our next UCL Undergraduate Open Days will be hosted both online and in person. Our Virtual Open Days, from 23 to 27 May 2022, are packed with subject admissions talks providing you an insight into our degree programmes. You will have the opportunity to speak to admissions staff and academic tutors and also interact with current students to find out what studying at UCL is really like.

Our in-person Open Days on 15 and 16 July 2022 will allow you to experience and explore the Bloomsbury campus and meet with UCL staff and students.

See ucl.ac.uk/openday for more details.

To find out more about other opportunities to visit our campus, talk to student and staff, book a tour or details of Higher Education fairs, schools and country visits, visit ucl.ac.uk/prospective-students.

If you'd like to find out more

If you have a general enquiry about UCL and our degree programmes, feel free to contact us:

study@ucl.ac.uk
+44 (0)20 3370 1214

Access and Widening Participation

UCL runs a range of summer schools, taster days and other activities for prospective students from under-represented groups. To find out more, including the eligibility criteria for these, visit: ucl.ac.uk/wp

How to get to us

Whether you're coming from elsewhere in London, the UK or overseas, it's easy to get to us. See ucl.ac.uk/maps/public-transport for directions.



Scan the QR code,
or search: '[UCL Open Days](#)'
to find out more



Image captions and credits

Front cover

- UCL Portico during 2021's Welcome Event. Courtesy of James Tye

Inside front cover

- Aerial photographs showing UCL's location in central and east London. © Jason Hawkes

p02–03

- UCL Portico. Courtesy of Matt Clayton
- Cruciform Building at night. Courtesy of Mary Hinkley/UCL Digital Media
- Woburn Walk – a Georgian era pedestrian street in Bloomsbury and a regular sight in tv and film productions. Courtesy of Mary Hinkley/UCL Digital Media
- The Micrarium in UCL's Grant Museum displays 2,323 of the tiniest specimens in the collection. Courtesy of Matt Clayton
- Computer-generated image of the entrance to the Marshgate building at UCL East. Courtesy of Glass Canvas
- Taking in The Bartlett School of Architecture Summer Show 2019, an annual showcase of undergraduate students' work. Courtesy of Paula Smith Photography
- UCL Quadrangle. Courtesy of Elaine Perks
- Russell Square, a green space close to UCL's Bloomsbury campus. Courtesy of Mary Hinkley/UCL Digital Media

p04–06

- William Wilkins' neo-Grecian ten-column Corinthian portico has formed the heart of UCL's Bloomsbury campus since 1826. Courtesy of Matt Clayton

p08–09

- UCL researchers work on NASA's ANITA experiment. This Antarctic-based observatory detects ultra-high-energy neutrinos, giving insights into the universe beyond our galaxy. Courtesy of Ryan Nicol
- Conducting research in the laboratory. Courtesy of Matt Clayton
- UCL Mechanical Engineering students working on their IMechE Formula Student car. Courtesy of UCL Engineering/James Tye
- Here East. Courtesy of Tim Crocker

p10–11

- Sir William Ramsay's discovery of the noble gases powered some of the world's most significant technological advances. Courtesy of Unsplash
- Sir Roger Penrose was awarded the Nobel Prize in Physics in 2020 for proving that the general theory of relativity predicts black holes. Courtesy of Adobe Stock/Redpixel
- Statue of Rabindranath Tagore, a poet, artist and musician who shaped Bengali culture in the late 19th and early 20th centuries. Courtesy of Mat Wright

p12–13

- Generation One campaign images (forest fire; landfill site, vegetable patch; tall trees). Courtesy of Getty Images

- With cycle racks, bike hangars and a Bike Buddy scheme, students are encouraged to cycle to UCL. Courtesy of Sustainable UCL/Poppy Stockbridge

p14–15

- Rice farming in South-East Asia. Courtesy of the Hult Prize
- Neucruit founder Livia Ng. Courtesy of UCL Innovation & Enterprise
- Online learning platform ZNotes. Courtesy of ZNotes

p16–17

- An 8-metre reach snake robot equipped with imaging sensors, located at the UCL Robotic Institute research facility at Here East. Courtesy of Tim Crocker
- Interior of UCL's Student Centre which opened in February 2019. Courtesy of Matt Clayton

p18–19

- Computer-generated images of our new UCL East campus: Pool Street West interior, terrace and nature lab. Courtesy of Glass Canvas

p20–21

- Students sitting opposite the London Aquatics Centre on Queen Elizabeth Olympic Park. Courtesy of Matt Clayton
- UCL East is a car-free site, with approximately 1,500 cycle spaces. Courtesy of James Tye
- Computer-generated image of UCL East campus at night: Pool Street West (left); Marshgate (right). Courtesy of Glass Canvas

p22–23

- Gordon Square, close to UCL, is a popular place to relax. Courtesy of Mat Wright
- Student planting at the IOE during Sustainability Week. Courtesy of Sustainable UCL/Poppy Stockbridge
- A cube of textiles on UCL's Front Quad sparks conversation on 'fast fashion'. Courtesy of Sustainable UCL/Poppy Stockbridge
- Exterior of UCL's Student Centre looking out onto the Japanese Garden. Courtesy of Matt Clayton
- Imran Mannan used the roof of one of UCL's buildings to test the effectiveness of solar panels in urban environments. Courtesy of Josh Blacker

p24–25

- Watch one of Shakespeare's plays at the Globe Theatre. Courtesy of Mat Wright
- The British Museum, founded in 1753, was the first national public museum in the world. Courtesy of Mat Wright
- The Houses of Parliament – seat of UK government. Courtesy of Mat Wright

p28–29

- The newly refurbished, self-catered halls at Astor College. Courtesy of UCL Accommodation
- A large single room in John Adams Hall. Courtesy of UCL Accommodation
- A warm welcome awaits new arrivals to UCL. Courtesy of UCL Accommodation

p30–31

- Students taking part in team sports. Courtesy of Students' Union UCL
- Student playing the trumpet. Courtesy of Students' Union UCL
- Preparing for a UCL Drama Society performance. Courtesy of Students' Union UCL

p32–33

- UCL alumna, Abigail Irozuru. Courtesy of Russell Cheyne/Reuters/Alamy Stock Photo
- Recent graduates celebrating at their graduation ceremony. Courtesy of John Moloney Photography

p34–35

- Our Student Ambassador team help out at events such as Open Days and Graduation. Courtesy of Paula Smith Photography
- Students relaxing in one of several on-campus cafés run by the Union. Courtesy of Students' Union UCL
- Therapy dogs occasionally visit the campus to help our students during stressful times like the examination period. Courtesy of James Tye

p34–35

- One of UCL's summer graduation ceremonies at the Royal Festival Hall. Courtesy of Matt Clayton
- A student presenting at our Global Citizen Employability Programme (now known as Careers with Global Impact series). Courtesy of Alejandro Salinas Lopez/UCL Digital Media

p40

- Students studying on the roof terrace of UCL Student Centre. Courtesy of James Tye
- UCL Student Centre also provides space for group working. Courtesy of James Tye

p41

- The Bartlett's B-made workshops at 22 Gordon Street and Here East host a range of powerful resources, combined with large, open spaces that can be used for full-scale prototyping and assembling. Courtesy of Tim Crocker

p42

- A Psychology and Language Sciences student volunteer at UCL's World Stroke Day Forum. Courtesy of Dr Jake Fairnie
- Cathy Price, Director of the Wellcome Centre for Human Neuroimaging, presenting at UCL's World Stroke Day Forum. Courtesy of Dr Jake Fairnie

p43

- An Education Studies BA student sits outside the IOE building. Courtesy of John Cobb
- The IOE's Institute Bar on Bedford Way. Courtesy of Mary Hinkley/UCL Digital Media

p44

- Biochemical engineering students in the pilot plant facility. Courtesy of UCL Engineering/James Tye
- Part of the UCL–Ventura CPAP device, developed as a breathing aid for COVID-19 patients. Courtesy of UCL Engineering/James Tye

- p45**
- Inside Bentham House, the Faculty of Laws' iconic Grade II listed home. Courtesy of UCL Faculty of Laws
 - The Moot Court in Bentham House. Courtesy of Mat Wright
- p46**
- An undergraduate student wearing protective eyewear while conducting an experiment in the School of Pharmacy. Courtesy of David Bishop
 - A Life Sciences student in the library next to a DNA structure model. Courtesy of David Bishop
- p47**
- Students in a physics laboratory. Courtesy of Alejandro Salinas Lopez/ UCL Digital Media
 - UCL scientists are part of a team using drones to monitor the behaviour of volcanoes, such as this in Papua New Guinea. Courtesy of Emma Liu
- p48**
- Applied Medical Sciences students in a practical session. Courtesy of Michael Solotan
 - Our outstanding facilities include the UCL Cancer Institute. Courtesy of Mary Hinkley/UCL Digital Media
- p49**
- Rod Fai Market, Bangkok, Thailand. Courtesy of istockphoto/aluxum
- p50**
- UCL students working together in one of the Student Centre's spaces. Courtesy of James Tye
 - Students outside the Print Room Café. Courtesy of James Tye
- p51**
- The exterior of the SSEES building on Taviton Street. Courtesy of UCL SSEES
- p52**
- The spectacular Donaldson Reading Room in UCL's Main Library. Courtesy of Mat Wright
- p54–55**
- The Geography Department Map and Reading Rooms contain a huge range of resources for Geography students. Courtesy of Mat Wright
 - The Petrie Museum holds around 80,000 objects including these shabtis, making it one of the greatest collections of Egyptian and Sudanese archaeology in the world. Courtesy of Kirsten Holst
 - A student at work in a laboratory in UCL's Cruciform Building – a hub for the study of medical and life sciences. Courtesy of Mat Wright
 - UCL Computer Science's Immersive Virtual Environments Laboratory. Courtesy of Paula Smith Photography
 - UCL's Special Collections is one of the foremost university collections of manuscripts, archives and rare books in the UK. These items are accessible for research, teaching and engagement. Courtesy of Mat Wright
- Earth Sciences student measuring the strike and dip of tilted beds in Devon. Courtesy of UCL Earth Sciences
- p56–57**
- Students taking in The Bartlett School of Planning Expo 2019, an annual showcase of student work. Courtesy of Richard Timmerman
 - *Down to Earth*, a drawing by Architecture BSc student Reem Taha Hajj Ahmad. Courtesy of the Bartlett School of Architecture
- p58–59**
- Students create a bespoke programme incorporating both arts and science subjects. Courtesy of Matt Clayton
 - There are a number of study spaces on campus, including the JBS Haldane Study Hub. Courtesy of Matt Clayton
 - The Arts and Sciences Common Room in Malet Place. The mural on the wall is a commissioned illustration for the UCL Goldman Sachs *10,000 Small Businesses* programme. Courtesy of Mat Wright
- p60–61**
- Practical sessions in laboratories are a key component of programmes in Biological and Life Sciences. Courtesy of David Bishop
 - Students can focus their studies on Biodiversity and Conservation in our Biological Sciences programmes. Bedruthan Beach in Cornwall. Courtesy of Mary Hinkley/UCL Digital Media
 - Our degrees incorporate a high level of practical work. Courtesy of David Bishop
- p62**
- Students collaborate to tackle the challenging business and management landscape. Courtesy of UCL School of Management
 - Connect with truly inspiring peers from around the world and build your global network. Courtesy of UCL School of Management
- p63**
- UCL Computer Science students testing a Myo armband and Notch motion capture sensors. Courtesy of UCL Engineering/ James Tye
- p64–65**
- UCL's Main Library houses collections related to economics, public policy, human rights and international relations among others. Courtesy of Mat Wright
- p66**
- Student Ibtissam El-Founti Hamed in the IOE's social work space. Courtesy of Sarah-Jane Gregori
- p67–68**
- UCL's MechSpace student hub in King's Cross is dedicated to the design and build of mechanical engineering student prototypes and provides a London base for the STEM outreach organisation F1 in Schools. Courtesy of Shaun Waldie
 - Top end of a continuous distillation column used to separate binary mixtures in UCL Chemical Engineering. Courtesy of UCL Engineering/James Tye
- p69**
- *Steps to Progress* installation by UCL PhD student Harvey Wiltshire on the entrance staircase to UCL's Main Library. Courtesy of Paula Smith Photography
- p70**
- *Flamingo Fun 2.5* (wall) and *Firecracker Lemon Lime* (floor) by UCL Fine Art student Florence Mytum, at the annual Slade School degree show. Courtesy of Thomas Jenkins
- p71**
- A genealogical table of the kings of England to Edward IV, showing the descent of England's kings from Adam and Eve. This manuscript was bequeathed to UCL by an alumna. Courtesy of Mat Wright
- p73**
- Students have access to nearly 10,000 online recordings, including documentaries, lectures, audio and videos, in a wide variety of languages. Courtesy of UCL SSEES
 - The School of Slavonic and East European Studies Library is dedicated to supporting the study of Central and Eastern Europe and Russia. Courtesy of UCL SSEES
- p77**
- The recently redeveloped Bentham House includes a bright, spacious social hub and cafe for UCL Laws students. Courtesy of UCL Faculty of Laws
- p78–79**
- The UCL-led PanCam that provides the 'eyes' for the European Space Agency's ExoMars Rover Rosalind Franklin. Courtesy of Thales Alenia Space
 - Statistics students at a Hackathon event in UCL. Courtesy of David Bishop
- p80**
- UCL's Media BA offers a number of pathways, including designing for virtual reality. Courtesy of Adobe Stock/kegfire
- p81–82**
- Researchers working in the laboratory. Courtesy of UCL Digital Media
 - Second-year Applied Medical Sciences students in the laboratory at the Royal Free Hospital in Hampstead. Courtesy of Mat Wright
- p83–84**
- A colourful array of chemicals is showcased inside UCL's Christopher Ingold building. Sir Christopher Ingold, who served as head of UCL Chemistry (1937–61), is regarded as one of the principal pioneers of physical organic chemistry. Courtesy of Mat Wright
- p85–86**
- Social/study space in the UCL Student Centre. Courtesy of Paula Smith Photography
 - A Psychology seminar group meeting. Courtesy of Dr Jake Fairnie
- p96**
- UCL's Undergraduate Open Days provide an opportunity to see for yourself how amazing our university is. Courtesy of Paula Smith Photography

Thanks to all the staff and students who contributed to this Prospectus.

Produced by UCL Communications and Marketing, February 2022

Designed by Jack Renwick Studio

Printed by Belmont Press. A FSC and PEFC certified printer using an alcohol-free printing process, at a manufacturing facility operating an ISO 14001: 2015 certified Environmental Management System.

This Prospectus has been printed on Soporset Premium Offset, a chlorine-free paper that carries the EU Ecolabel. The range comes from responsibly managed forests that contribute to the reduction of greenhouse gas emissions to the atmosphere and uses forest biomass as its main source of energy.

Images on the Prospectus mailing wallet are courtesy of Glass Canvas, James Tye, Mary Hinkley/UCL Digital Media, Matt Clayton, Mat Wright, Students' Union UCL, UCL Accommodation.

Information in alternative formats

The information in this publication can also be found at ucl.ac.uk/prospectus on the UCL website.

If you require the information in an alternative format (e.g. large print), please contact us.

study@ucl.ac.uk
+44 (0)20 3108 8520

Disclaimer

UCL has sought to ensure that the information given in this Undergraduate Prospectus is correct at the time of going to press but we cannot guarantee that it is accurate.

The information contained in this Prospectus is subject to change. We may, for example, need to withdraw or vary any degree programme and/or alter entry requirements, fees, facilities and/or services described.

For the most up-to-date information, please see UCL's online Undergraduate Prospectus at ucl.ac.uk/prospectus. The online Prospectus takes priority over this printed Prospectus. As such, you should check the information in the online Prospectus before accepting any offer of a place at UCL.



www.carbonfootprint.com

University College London
INV3965208

Printed on carbon neutral paper



MIX
Paper from
responsible sources
FSC® C015185

Consistently ranked as one of the top ten universities in the world*

* QS World University Rankings
2010–2022

University College London
Gower Street, London,
United Kingdom
WC1E 6BT

**Information on UCL
degree programmes:**

study@ucl.ac.uk
+44 (0)20 3108 8520
ucl.ac.uk/prospectus

Facebook: [uclofficial](https://www.facebook.com/uclofficial)
Instagram: [ucl](https://www.instagram.com/ucl)
SoundCloud: [uclsound](https://www.soundcloud.com/uclsound)
Twitter: [ucl](https://twitter.com/ucl) and [uclnews](https://twitter.com/uclnews)
YouTube: [UCLTV](https://www.youtube.com/UCLTV)