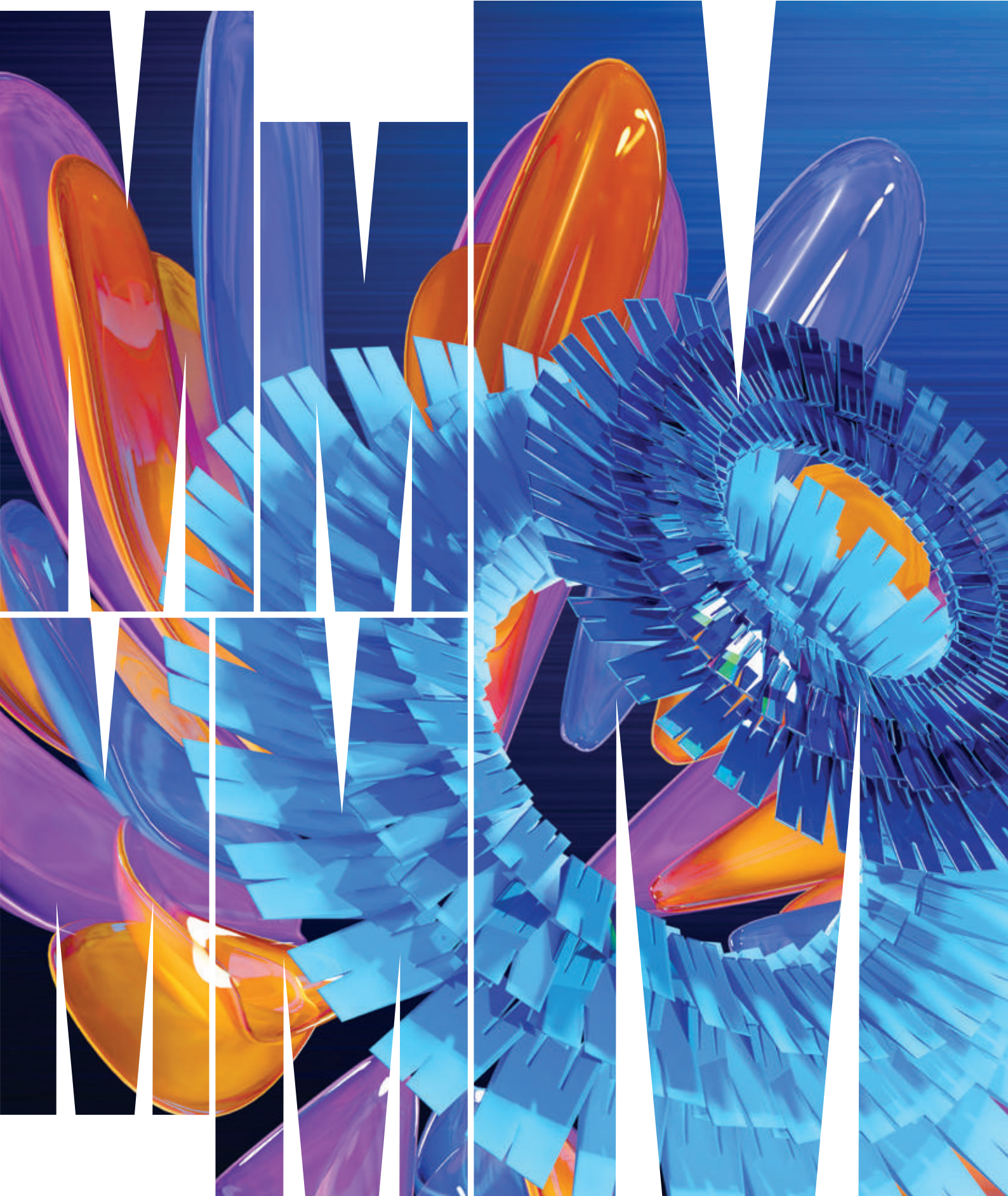




MONASH
University

A GUIDE TO ENTRY

2027



BRING YOUR **CURIOSITY,** **OPTIMISM AND PASSION,** AND DISCOVER A COURSE THAT'S RIGHT FOR YOU.

It's an exciting time in your life as you enter the final years of secondary school and start to consider what your future might look like.

At Monash, we're here to help. We can offer you quality teaching and fantastic facilities. As well as studying your course of choice, you'll have opportunities to enhance your learning experience through studying abroad, getting involved in clubs and societies, or completing work placements as part of your studies. There's so much we can offer you – let's get started.

ACKNOWLEDGEMENT OF COUNTRY

Monash University recognises that its Australian campuses are located on the unceded lands of the people of the Kulin Nations, and pays its respects to their Elders, past and present.



DID YOU KNOW?

Monash University is consistently ranked in the top 100 universities in the world, according to the Times Higher Education World University Rankings. A Monash degree could take you anywhere in the world.



DISCOVER YOUR OPTIONS

You may or may not have ideas about what you want to pursue as a career. Either way, it's important to keep your options open and know what subjects are required to undertake certain courses at Monash (see pages 7-11 for course information).

FOLLOW YOUR PASSION

Most of our graduates will tell you that the more you put into a course, the more you get out of it, with better grades and better experiences. If your course is based on something you enjoy, and involves subjects you like and are good at, you're more likely to succeed.

DO SOME DETECTIVE WORK

Do as much independent research as you can. There are loads of online testing tools that can provide insights into career opportunities. Visit the Australian government website at www.yourcareer.gov.au to learn more about yourself and the world that awaits you. There's lots of information available to help you, but sometimes the challenge is working through it all. Here are our top three tips on where to start.

1. Come to our Open Days and info nights

Nothing can replace experiencing the University environment for yourself. You get a feel for the atmosphere, the facilities and what the people are like, which can help with your end decision.

2. Visit our website

Our website is full of information. It can be a bit overwhelming but if you start at monash.edu/study, you'll be able to find all you need.

3. Make a shortlist

You'll come across lots of information about courses – online and in print. To help make sense of your options, create a shortlist of key features you're looking for (e.g. career outcomes, course location, facilities) and check each course you research against these.

TALK TO OTHERS, BUT DECIDE FOR YOURSELF

Talk to people who know you – parents, family, friends, teachers and career advisers. Tell them what you're considering, and ask them what they think you're good at. Ask the professionals you know what it's like to be an accountant, doctor, engineer, lawyer, nurse or teacher. Or try work experience – it's a great way to get a taste of a career that interests you.

[CLICK HERE TO
DISCOVER MONASH.](#)



SCIENCE, NUMBERS AND TECHNOLOGY



I'M GOOD AT



WORDS, PICTURES AND STORIES

I WANT TO

HELP PEOPLE

Engineering <
Medicine, nursing and health sciences <
Pharmacy and pharmaceutical science <
Science <

> Arts
> Education
> Law
> Medicine, nursing and health sciences

IMPROVE PEOPLE'S LIVES

Business <
Engineering <
Information technology <
Medicine, nursing and health sciences <
Pharmacy and pharmaceutical science <
Science <

> Art, design and architecture
> Arts
> Education
> Business
> Law

BUILD THINGS

Engineering <
Information technology <
Science <

> Art, design and architecture

DESIGN AND CREATE THINGS

Engineering <
Information technology <
Science <

> Art, design and architecture

IMPROVE THE ENVIRONMENT

Engineering <
Information technology <
Science <

> Art, design and architecture
> Arts
> Business
> Law

MAKE MONEY WORK

Business <
Science <

> Business
> Law

EXPLAIN THINGS TO PEOPLE

Business <
Engineering <
Information technology <
Medicine, nursing and health sciences <
Pharmacy and pharmaceutical science <
Science <

> Art, design and architecture
> Arts
> Business
> Education
> Law

ENTERTAIN

Information technology <

> Art, design and architecture
> Arts



Caulfield campus



Jock Marshall reserve, Clayton campus



Clayton campus

HOW YOU'LL BUILD A COURSE

So, you know exactly what studies you're keen to pursue? Or maybe you want to explore your options? Either way, you can create the course that best suits you.

COMPREHENSIVE, SPECIALIST OR DOUBLE DEGREE?

You'll enrol in either a **comprehensive**, **specialist** or a **double degree** course. The following course maps give you an idea of how each of these course-types work.

COMPREHENSIVE COURSES

Comprehensive courses offer many possibilities, and are a great option if you're not quite sure what to pursue. All our comprehensive courses have majors/minors so you can build a course based on your interests (see page 6).

Comprehensive course map (indicative)

YEAR 1				
SEM 1	MAJOR UNIT	MINOR UNIT	DISCIPLINE SPECIFIC	FREE ELECTIVE
SEM 2	MAJOR UNIT	MINOR UNIT	DISCIPLINE SPECIFIC	FREE ELECTIVE
YEAR 2				
SEM 1	MAJOR UNIT	MINOR UNIT	DISCIPLINE SPECIFIC	FREE ELECTIVE
SEM 2	MAJOR UNIT	MINOR UNIT	DISCIPLINE SPECIFIC	FREE ELECTIVE
YEAR 3				
SEM 1	MAJOR UNIT	MAJOR UNIT	FREE ELECTIVE	FREE ELECTIVE
SEM 2	MAJOR UNIT	MAJOR UNIT	FREE ELECTIVE	FREE ELECTIVE

SPECIALIST COURSES

Specialist courses are quite focussed in their subject areas. You still have options to broad your studies, but you'll specialise in a particular subject area.

Bachelor of Biomedical Science (indicative)

YEAR 1				
SEM 1	DISCIPLINE SPECIFIC	DISCIPLINE SPECIFIC	DISCIPLINE SPECIFIC	ELECTIVE
SEM 2	DISCIPLINE SPECIFIC	DISCIPLINE SPECIFIC	DISCIPLINE SPECIFIC	ELECTIVE
YEAR 2				
SEM 1	DISCIPLINE SPECIFIC	DISCIPLINE SPECIFIC	DISCIPLINE SPECIFIC	ELECTIVE
SEM 2	DISCIPLINE SPECIFIC	DISCIPLINE SPECIFIC	DISCIPLINE SPECIFIC	ELECTIVE
YEAR 3				
SEM 1	DISCIPLINE SPECIFIC	ELECTIVE	ELECTIVE	ELECTIVE
SEM 2	DISCIPLINE SPECIFIC	ELECTIVE	ELECTIVE	ELECTIVE

HOW TO CREATE YOUR COURSE

No matter the type of course you choose, you'll create your course by picking units from within or outside your discipline area.

- **Discipline-specific:** these must be completed as part of your studies.
- **Discipline-elective:** you choose what unit to study from within a list of units within your study area.
- **Free-electives:** a unit offered by Monash from any study/interest area.

Your unit choices will focus or broaden your studies. What's available to you will vary depending on the course you've enrolled in.

DOUBLE DEGREES

Double degrees allow you to study towards two degrees at the same time. You can keep your options open and develop expertise in different but complementary areas. Monash has one of the largest offerings of double degree courses in Australia. We also offer two kinds of double degrees: double undergraduate degrees, or undergraduate/graduate degrees.

Bachelor of Business and Bachelor of Arts (indicative)

YEAR 1				
SEM 1	BUSINESS	BUSINESS	ARTS	ARTS
SEM 2	BUSINESS	BUSINESS	ARTS	ARTS
YEAR 2				
SEM 1	BUSINESS	BUSINESS	ARTS	ARTS
SEM 2	BUSINESS	BUSINESS	ARTS	ARTS
YEAR 3				
SEM 1	BUSINESS	BUSINESS	ARTS	ARTS
SEM 2	BUSINESS	BUSINESS	ARTS	ARTS
YEAR 4				
SEM 1	BUSINESS	BUSINESS	ARTS	ARTS
SEM 2	BUSINESS	BUSINESS	ARTS	ARTS

BUSINESS	specified study	ARTS	specified study
BUSINESS	major	ARTS	major

Undergraduate/graduate double degrees

Some double degree courses incorporate both an undergraduate and graduate element. After five years' study, you'll graduate with both a bachelor's and a master's degree.

These courses are:

- Bachelor of Architectural Design and Master of Architecture
- Bachelor of Actuarial Science and Master of Actuarial Studies
- Bachelor of Medical Science and Doctor of Medicine
- Bachelor of Pharmacy (Honours) and Master of Pharmacy.

In addition, the Bachelor of Economics, Bachelor of Engineering (Honours) and select Arts undergraduate courses offer accelerated master's pathways that enable you to complete an expert master's course with only one further year of study.

OUR RANGE OF DOUBLE DEGREES

Monash has one of the largest offerings of double degree combinations in Australia. For admission into a double degree, generally the higher entry requirements apply of the two single degrees. The range of criteria that applies to each single degree also applies to the double degree. For example, if you're applying for the Bachelor of Arts and Bachelor of Music, you'll need to meet the subject prerequisites for both courses and satisfy any additional requirements. Some double degree combinations may require you to study across two campuses in order to complete your studies.

ART, DESIGN AND ARCHITECTURE

ARCHITECTURAL DESIGN

- Architecture (Master)
- Engineering¹

DESIGN

- Business
- Engineering¹
- Information Technology
- Media Communication

FINE ART

- Arts • Business • Education
- Information Technology
- Media Communication

ARTS

ARTS

- Business • Commerce
- Criminology • Education
- Engineering¹ • Fine Art
- Global Studies
- Health Sciences
- International Business
- Information Technology
- Laws • Marketing
- Media Communication
- Music • Politics, Philosophy and Economics • Science

CRIMINOLOGY

- Arts • Information Technology
- Laws

GLOBAL STUDIES

- Arts • Commerce
- Information Technology
- Laws • Science

MEDIA COMMUNICATION

- Arts • Business • Design
- Fine Art • Marketing

MUSIC

- Arts • Commerce • Education
- Laws • Science

POLITICS, PHILOSOPHY AND ECONOMICS

- Arts • Commerce • Laws

BUSINESS

ACCOUNTING

- Business

ACTUARIAL SCIENCE

- Commerce
- Actuarial Studies (Master)

BANKING AND FINANCE

- Business

BUSINESS

- Accounting • Arts
- Banking and Finance
- Design • Education
- Fine Art
- Information Technology
- International Business
- Marketing
- Media Communication

COMMERCE

- Actuarial Science • Arts
- Biomedical Science
- Computer Science
- Economics • Engineering¹
- Finance • Global Studies
- Information Technology • Laws
- Music • Politics, Philosophy and Economics • Science

ECONOMICS

- Commerce

FINANCE

- Commerce

INTERNATIONAL BUSINESS

- Arts • Business

MARKETING

- Arts • Business
- Media Communication

EDUCATION

EDUCATION

- Arts • Business • Fine Art
- Music • Science

ENGINEERING

AEROSPACE

- Arts • Commerce • Laws
- Science

BIOMEDICAL

- Arts • Commerce • Science

CHEMICAL

- Arts • Commerce
- Biomedical Science • Laws
- Pharmaceutical Science
- Science

CIVIL

- Architectural Design • Arts
- Biomedical Science
- Commerce • Laws • Science

ELECTRICAL AND COMPUTER SYSTEMS

- Arts • Commerce • Computer Science
- Information Technology • Laws • Science

ENVIRONMENTAL

- Arts • Biomedical Science
- Commerce • Science

MATERIALS

- Arts • Commerce • Laws
- Biomedical Science • Science

MECHANICAL

- Arts • Biomedical Science
- Commerce • Design • Laws
- Science

ROBOTICS AND MECHATRONICS

- Arts • Commerce • Computer Science
- Information Technology • Science

SOFTWARE

- Arts • Commerce • Computer Science
- Information Technology • Science

INFORMATION TECHNOLOGY

COMPUTER SCIENCE

- Commerce • Engineering¹
- Laws • Science

INFORMATION TECHNOLOGY

- Arts • Business • Commerce
- Criminology • Design
- Engineering¹ • Fine Art
- Global Studies • Laws
- Science

LAWS

LAWS

- Arts • Biomedical Science
- Commerce
- Computer Science
- Criminology • Engineering¹
- Global Studies
- Information Technology
- Music • Politics, Philosophy and Economics • Science

MEDICINE, NURSING AND HEALTH SCIENCES

BIOMEDICAL SCIENCE

- Commerce • Engineering¹
- Science

HEALTH SCIENCES

- Arts

MEDICINE

- Bachelor of Medical Science and Doctor of Medicine

NURSING

- Nursing and Midwifery

PHARMACY AND PHARMACEUTICAL SCIENCES

PHARMACY

- Pharmacy (Master)

PHARMACEUTICAL SCIENCE

- Engineering¹

SCIENCE

SCIENCE

- Arts • Biomedical Science
- Commerce • Computer Science • Education
- Engineering¹ • Global Studies
- Information Technology
- Laws • Music

¹ This is only available with select specialisations.

STUDY AREAS

You'll structure your course through unit choices to build a major and minor. A **major** is the area of study you wish to focus in a comprehensive course. It's the main field of study you wish to pursue. A **minor** can be a complementary subject to help boost your study, or explore a hobby or interest. At Monash you have the opportunity to explore your options from your first year.

You can see the breadth of options outlined in the tables below.

Arts	Major	Minor
Anthropology	■	▲
Archaeology and ancient history	■	▲
Behavioural studies		▲
Bioethics		▲
Chinese studies	■	▲
Communications and media studies	■	▲
Comparative Asian and European studies	■	▲
Criminology	■	▲
Critical performance studies		▲
Economics	■	▲
European languages (French, German, Italian and Spanish and Latin American studies)	■ ¹	▲
Film and screen studies	■	▲
Gender studies	■	▲
Global Asia	■	▲
Health humanities	■	▲
History	■	▲
Holocaust and genocide studies		▲
Human geography	■	▲
Human rights	■	▲
Indigenous cultures and histories	■	▲
Indonesian studies	■	▲
International relations	■	▲
International studies	■	▲
Japanese studies	■	▲
Jewish studies		▲
Journalism	■	▲
Korean studies	■	▲
Linguistics and English language	■	▲
Literary studies	■	▲
Music	■	▲
Philosophy	■	▲
Politics	■	▲
Psychology	■ ¹	▲
Sociology	■	▲

Business	Major	Minor
Accounting	■	▲
Banking and finance	■	▲
Business analytics and statistics	■	▲
Business law	■	▲
Business management	■	▲
Business studies	■	
Economics and business strategy	■	▲
Financial econometrics	■	
Human resource management	■	▲
International business	■	▲
Marketing	■	▲
Sustainability and responsible management	■	▲
Taxation		▲

Business Administration

Accountancy	■	▲
Business administration studies	■	
Economics and business decisions		▲
Finance and economics	■	
Management practice	■	▲
Marketing and communications	■	▲

Commerce

Accounting	■	▲
Actuarial studies	■	▲
Behavioural commerce	■	▲
Business analytics	■	▲
Business law		▲
Econometrics	■	▲
Economics	■	▲
Finance	■	▲
Management studies	■	▲
Marketing science	■	▲
Mathematical foundations of econometrics	■	
Sustainability and responsible management	■	▲

Information Technology

	Major	Minor
Business information systems	■	▲
Computer networks and security		▲
Computer science		▲
Cybersecurity	■	▲
Data science		▲
Games and immersive media	■	
Games design		▲
Games development		▲
Mobile apps development		▲
Software development	■	▲
Software engineering		▲
Web development		▲

Science

Anatomy and developmental biology	■	▲
Applied mathematics	■ ¹	
Astrophysics	■ ¹	▲
Biochemistry	■ ¹	▲
Chemistry	■ ¹	▲
Climate and atmospheric science	■ ¹	▲
Computational science	■ ¹	▲
Earth science	■ ¹	▲
Ecology and conservation biology	■	▲
Environmental science		
<small>only available as extended major</small>		
Financial and insurance mathematics		
<small>only available as extended major</small>		
Genetics and genomics	■ ¹	▲
Geographical science	■ ¹	▲
Human pathology	■	
Immunology	■ ¹	▲
Mathematical statistics		▲
Mathematics		▲
Microbiology	■ ¹	▲
Molecular biology		▲
Pharmacology	■	▲
Physics	■ ¹	▲
Physiology	■	▲
Plant sciences	■	▲
Psychology	■ ¹	▲
Pure mathematics	■ ¹	
Zoology	■	▲

¹ Also available as an extended major.

UNDERGRADUATE COURSES AT A GLANCE

These tables provide the subject prerequisites required for admission in 2027. We recommend that you focus on subject selection as a priority as the ATAR may change by the time you're ready to enter university. You can check the ATARs¹ for our courses on our website.

If you're an interstate student, you can find all the interstate equivalencies on our website.

monash.edu/study/interstate

Course	VCE PREREQUISITES		IB REQUIREMENTS (see page 12 for subjects and scores)	
	YEAR 12 ENGLISH UNITS 3&4	VCE MATHS		
ART DESIGN AND ARCHITECTURE				
Architectural Design	25 in English other than EAL, or 27 in English (EAL)		English: Level 1	
Design				
Design/Business			Units 3 and 4: at least 22 in Mathematical Methods or Specialist Mathematics, or a score of at least 25 in Further Mathematics	English: Level 1 Maths: Level 2
Design/Information Technology			Units 1 and 2: satisfactory completion in two units (any combination) of General Mathematics or Mathematical Methods or Specialist Mathematics	English: Level 1 Maths: Level 1
Design/Media Communication				
Fine Art (Art History and Curating)				
Art History and Curating/Business			Units 3 and 4: at least 22 in Mathematical Methods or Specialist Mathematics, or a score of at least 25 in General Mathematics	English: Level 1 Maths: Level 2
Art History and Curating/Media and Communication				
Fine Art				
Fine Art/Business			Units 3 and 4: at least 22 in Mathematical Methods or Specialist Mathematics, or a score of at least 25 in General Mathematics	English: Level 1 Maths: Level 2
Fine Art/Information Technology	Units 1 and 2: satisfactory completion in two units (any combination) of General Mathematics or Mathematical Methods or Specialist Mathematics	English: Level 1 Maths: Level 1		
Fine Art/Media Communication	NA			
ARTS, HUMANITIES AND SOCIAL SCIENCES				
Arts	25 in English other than EAL, or 27 in English (EAL)		English: Level 1	
Arts/Criminology				
Arts/Fine Art				
Arts/Art History and Curating				
Arts/Global Studies				
Arts/Health Science				
Arts/Media Communication				
Arts/Music				
Criminology	25 in English other than EAL, or 27 in English (EAL)	Units 1 and 2: satisfactory completion in two units (any combination) of General Mathematics or Mathematical Methods or Specialist Mathematics	English: Level 1	
Criminology/Information Technology				
Criminology and Policing	25 in English other than EAL, or 27 in English (EAL)		English: Level 1	
Global Studies	25 in English other than EAL, or 27 in English (EAL)	Units 1 and 2: satisfactory completion in two units (any combination) of General Mathematics or Mathematical Methods or Specialist Mathematics	English: Level 1	
Global Studies/Information Technology				
Media Communication	25 in English other than EAL, or 27 in English (EAL)	NA	English: Level 1	
Music			English: Level 1	
Politics, Philosophy and Economics	25 in English other than EAL, or 27 in English (EAL)	Units 3 and 4: at least 22 in Mathematical Methods or Specialist Mathematics, or a score of at least 25 in General Mathematics	English: Level 1 Maths: Level 2	
Politics, Philosophy and Economics/Arts				

CLICK HERE TO GO TO
monash.edu/study

¹ Published ATARs for courses are indicative only and change from year to year and should be used as a guide only.

UNDERGRADUATE COURSES AT A GLANCE

Course	VCE PREREQUISITES		IB REQUIREMENTS (see page 12 for subjects and scores)
	YEAR 12 ENGLISH UNITS 3&4	VCE MATHS	
BUSINESS			
Accounting	25 in English other than EAL, or 27 in English (EAL)	Units 3 and 4: at least 22 in Mathematical Methods or Specialist Mathematics, or 25 in General Mathematics.	English: Level 1 Maths: Level 2
Actuarial Science		Units 3 and 4: at least 25 in Mathematical Methods or Specialist Mathematics.	English: Level 1 Maths: Level 3
Banking and Finance	25 in English other than EAL, or 27 in English (EAL)	Units 3 and 4: at least 22 in Mathematical Methods or Specialist Mathematics, or 25 in General Mathematics.	English: Level 1 Maths: Level 2
Business	25 in English other than EAL, or 27 in English (EAL)	Units 3 and 4: at least 22 in Mathematical Methods or Specialist Mathematics, or 25 in General Mathematics.	English: Level 1 Maths: Level 2
Business/Accounting			
Business/Arts			
Business/Banking and Finance			
Business/Information Technology			
Business/International Business			
Business/Marketing			
Business/Media Communication			
Business Administration	25 in English other than EAL, or 27 in English (EAL)	Units 1 and 2: satisfactory completion in two units (any combination) of General Mathematics or Mathematical Methods or Specialist Mathematics	English: Level 1 Maths: Level 1
Commerce	25 in English other than EAL, or 27 in English (EAL)	Units 3 and 4: at least 25 in Mathematical Methods or Specialist Mathematics.	English: Level 1 Maths: Level 3
Commerce/Actuarial Science			
Commerce/Arts			
Commerce/Biomedical Science ⁵			
Commerce/Computer Science			
Commerce/Economics			
Commerce/Finance			
Commerce/Global Studies			
Commerce/Information Technology			
Commerce/Music ³			
Commerce/Politics, Philosophy and Economics			
Commerce/Science			
Digital Business	25 in English other than EAL or 27 in English (EAL)	22 in one of Maths: Mathematical Methods or Maths: Specialist Mathematics or at least 25 in Maths: General Mathematics	English: Level 1 Maths: Level 2
Economics	25 in English other than EAL, or 27 in English (EAL)	Units 3 and 4: at least 25 in Mathematical Methods or Specialist Mathematics.	English: Level 1 Maths: Level 3
Finance			
International Business	25 in English other than EAL, or 27 in English (EAL)	Units 3 and 4: at least 22 in Mathematical Methods or Specialist Mathematics, or 25 in Further Mathematics.	English: Level 1 Maths: Level 2
International Business/Arts			
Marketing	25 in English other than EAL, or 27 in English (EAL)	Units 3 and 4: at least 22 in Mathematical Methods or Specialist Mathematics, or 25 in Further Mathematics.	English: Level 1 Maths: Level 2
Marketing/Arts			
Marketing/Media Communication			

UNDERGRADUATE COURSES AT A GLANCE

Course	VCE PREREQUISITES			IB REQUIREMENTS (see page 12 for subjects and scores)	
	YEAR 12 ENGLISH UNITS 3&4	VCE MATHS	VCE SCIENCE		
EDUCATION					
Education	25 in English other than EAL, or 30 in English (EAL)	Units 1 and 2: satisfactory completion in two units (any combination) of General Mathematics or Mathematical Methods or Specialist Mathematics		English: Level 1 Maths: Level 1	
Early childhood and primary education					
Primary education					
Primary and secondary education					
Primary and Secondary health and physical education					
Primary and Secondary inclusive education					
Secondary health and physical education					
Secondary education (as part of a double degree)	see below	see below		see below	
Education (double degrees)					
Education/ Arts	25 in English other than EAL, or 30 in English (EAL)	Units 1 and 2: satisfactory completion in two units (any combination) of General Mathematics or Mathematical Methods or Specialist Mathematics		English: Level 1 Maths: Level 1	
Education/ Business		Units 3 and 4: at least 22 in Mathematical Methods or Specialist Mathematics, or 25 in Further Mathematics.		English: Level 1 Maths: Level 2	
Education/ Fine Art		Units 1 and 2: satisfactory completion in two units (any combination) of General Mathematics or Mathematical Methods or Specialist Mathematics			English: Level 1 Maths: Level 1
Education/Music ³					English: Level 1 Maths: Level 1
Education/Science		at least 25 in one of: Biology, Chemistry, Environmental Science, Geography, Mathematical Methods (any), Specialist Mathematics, Physics or Psychology	English: Level 1 Maths: Level 1 Science: at least 4 at SL or 3 at HL in one of the subjects from the Science approved list		
Bachelor of Learning Design and Technology	25 in English other than EAL or 27 in English (EAL)			English Level 1	

ENGINEERING

Engineering	25 in English other than EAL, or 30 in English (EAL)	25 in one of Mathematical Methods or Specialist Mathematics.		English: Level 1 Maths: Level 3 Science: at least 4 at SL or 3 at HL in Chemistry or Physics	
Engineering (accelerated master's)					
Engineering/Architectural Design					at least 25 in one of Chemistry or Physics
Engineering/Arts					
Engineering/Biomedical Science					at least 25 in Chemistry
Engineering/Commerce					
Engineering/Computer Science					25 in one of Chemistry or Physics
Engineering/Design					
Engineering/Information Technology					at least 25 in Chemistry
Engineering/Pharmaceutical Science					at least 25 in Chemistry
Engineering/Science	at least 25 in Chemistry or Physics	English: Level 1 Maths: Level 3 at least 4 at SL or 3 at HL in Chemistry or Physics.			

UNDERGRADUATE COURSES AT A GLANCE

Course	VCE PREREQUISITES			IB REQUIREMENTS (see page 12 for subjects and scores)
	YEAR 12 ENGLISH UNITS 3&4	VCE MATHS	VCE SCIENCE	

INFORMATION TECHNOLOGY

Computer Science	at least 25 in English other than EAL, or 27 in English (EAL)	at least 25 in one of Mathematical Methods or Specialist Mathematics.	at least 25 in one of: Biology, Chemistry, Environmental Science, Geography, Mathematical Methods (any), Specialist Mathematics, Physics or Psychology	English: Level 1 Maths: Level 3
Computer Science Advanced				English: Level 1 Maths: Level 1
Information Technology	25 in English other than EAL, or 27 in English (EAL)	Units 1 and 2: satisfactory completion in two units (any combination) of General Mathematics or Mathematical Methods or Specialist Mathematics		English: Level 1 Maths: Level 1 Science: at least 4 at SL or 3 at HL in one of the subjects from the Science approved list
Information Technology/Arts				
Information Technology/Science				

LAWS

Laws	at least 30 in English other than EAL, or 35 in English (EAL)	NA		English: Level 2
Laws/Arts				
Laws/Biomedical Science		Units 3 and 4: at least 25 in one of Mathematical Methods or Specialist Mathematics, or Physics	at least 25 in Chemistry	English: Level 2 Maths: Level 3, or 4 at SL or 3 at HL in Physics Science: at least 4 at SL or 3 at HL in Chemistry
Laws/Commerce				English: Level 2 Maths: Level 3
Laws/Computer Science				
Laws/Criminology		NA		
Laws/Engineering		Units 3 and 4: at least 25 in one of Mathematical Methods or Specialist Mathematics, or Physics		English: Level 2 Maths: Level 3 Science: at least 4 at SL or 3 at HL in Chemistry or Physics
Laws/Global Studies				English: Level 2
Laws/IT				
Laws/Music				
Laws/Politics Philosophy and Economics	Units 3 and 4: at least 22 in Mathematical Methods or Specialist Mathematics, or a score of at least 25 in General Mathematics.		English: Level 2 Maths: Level 2	
Laws/Science	NA	at least 25 in one of: Biology, Chemistry, Environmental Science, Geography, Mathematical Methods (any), Specialist Mathematics, Physics or Psychology	English: Level 2 Science: at least 4 at SL or 3 at HL in one of the subjects from the Science approved list	

MEDICINE, NURSING AND HEALTH SCIENCES

Biomedical Science	25 in English other than EAL, or 27 in English (EAL)	Units 3 and 4: at least 25 in one of Mathematical Methods or Specialist Mathematics, or 25+ in Physics	a study score of at least 25+ in Chemistry	English: Level 1 Maths: Level 3, or Physics Science: at least 4 at SL or 3 at HL in Chemistry
Biomedical Science (Scholars Program)		Units 3 and 4: 35+ in Maths Methods or Specialist Maths or Physics	a study score of at least 35+ in Chemistry	English: Level 1 Maths: higher score in Level 3 subjects, or Physics (at least 6 at SL or 5 at HL) Science: Chemistry – at least 6 at SL or 5 at HL
Health Sciences		NA		English: Level 1
Medicine	30 in English other than EAL, or 35 in English (EAL)	NA	a study score of at least 30+ in Chemistry	English: Level 2 Science: Chemistry – at least 5 at SL or 4 in HL
Nursing	25 in English other than EAL, or 27 in English (EAL)	Units 1 and 2: satisfactory completion in two units (any combination) of General Mathematics or Mathematical Methods or Specialist Mathematics		English: Level 1 Maths: Level 1
Nursing (Scholars Program)				
Nursing and Midwifery				
Nutrition Science				English: Level 1 Science: at least 4 at SL or 3 at HL in Chemistry or Biology
Nutrition Science (Scholars Program)		NA	at least 25 in one of Biology or Chemistry	
Occupational Therapy				English: Level 1
Paramedicine	25 in English other than EAL, or 30 in English (EAL)	Units 3 and 4: at least 22 in Mathematical Methods or Specialist Mathematics, or a score of at least 25 in Further Mathematics		English: Level 1 Maths: Level 2

UNDERGRADUATE COURSES AT A GLANCE

Course	VCE PREREQUISITES			IB REQUIREMENTS (see page 12 for subjects and scores)
	YEAR 12 ENGLISH UNITS 3&4	VCE MATHS	VCE SCIENCE	
Physiotherapy	30 in English other than EAL, or 35 in English (EAL)		at least 25 in two of Biology, Chemistry, Mathematical Methods, Specialist Mathematics, or Physics.	English: Level 2 Science: at least 4 at SL or 3 at HL in two subjects from: Biology, Chemistry, Further Mathematics (HL), Mathematics or Physics
Psychology	25 in English other than EAL, or 27 in English (EAL)			English: Level 1
Public Health				
Radiation Sciences				
Radiography and Medical Imaging	30 in English other than EAL, or 35 in English (EAL)	Units 3 and 4: at least 25 in one of Mathematical Methods or Specialist Mathematics.	at least 25 in either Biology or Physics	English: Level 2 Maths: Level 3 Science: at least 4 at SL or 3 in HL in Biology or Physics

PHARMACY AND PHARMACEUTICAL SCIENCES

Pharmaceutical Science	25 in English other than EAL, or 27 in English (EAL)	Units 3 and 4: 25 in one of Mathematical Methods or Specialist Mathematics.	a study score of at least 25 in Chemistry	English: Level 1 Maths: Level 3 Science: at least 4 at SL or 3 at HL in Chemistry
Pharmaceutical Science Advanced				
Pharmaceutical Science Advanced (Scholars Program)				
Pharmacy				
Pharmacy master's pathway				
Pharmacy (Scholars Program)				

SCIENCE

Applied Data Science	25 in English other than EAL, or 27 in English (EAL)	Units 3 and 4: 25 in one of Mathematical Methods or Specialist Mathematics.		English: Level 1 Maths: Level 3	
Applied Data Sciences Advanced	25 in English other than EAL, or 27 in English (EAL)	Units 3 and 4: 30+ in Maths Methods or Specialist Maths		English: Level 1 Maths: at least 5 in SL or 4 in HL in the level 3 Maths subjects	
Science	25 in English other than EAL, or 27 in English (EAL)	Units 3 and 4: 25 in one of Mathematical Methods or Specialist Mathematics. Or 25+ in Physics.	a study score of at least 25 in one of the Science approved list ¹	English: Level 1 Science: at least 4 at SL or 3 in HL in one of the subjects from the Science approved list	
Science/Arts					
Science/Biomedical Science			a study score of at least 25 in Chemistry	English: Level 1 Maths: Level 3 or at least 4 at SL or 3 at HL in Physics Science: at least 4 at SL or 3 at HL in Chemistry	
Science/Computer Science			Units 3 and 4: 25 in one of Mathematical Methods or Specialist Mathematics.	English: Level 1 Maths: Level 3	
Science/Global Studies				at least 25 in one of: Biology, Chemistry, Environmental Science, Geography, Mathematical Methods (any), Specialist Mathematics, Physics or Psychology	English: Level 1 Science: at least 4 at SL or 3 in HL in one of the subjects from the Science approved list
Science/Music					
Science Advanced – Global Challenges	30 in English other than EAL, or 35 in English (EAL)	NA	a study score of at least 30 in two subjects from: Biology, Chemistry, Environmental Science, Geography, Mathematical Methods (any), Specialist Mathematics, Physics or Psychology	English: Level 2 Science: at least 5 at SL or 4 at HL in one of the subjects from the Science approved list	
Science Advanced – Research		Units 3 and 4: 30+ in Maths Methods or Specialist Maths.		English: Level 2 Maths: Level 3 subjects, higher score – 5 in standard SL or 4 HL Science: at least 5 at SL or 4 at HL in two of the subjects from the Science approved list	

IB ACADEMIC PREREQUISITE LEVELS

All Monash undergraduate courses require you to have previously studied and achieved required standards in certain specified subjects.

The table below outlines the IB prerequisite levels and subjects.

English		Mathematics			Science
■ Level 1	■ Level 2	■ Level 1	■ Level 2	■ Level 3	■ Science approved list
<p>At least 4 in one of the following SL subjects:</p> <ul style="list-style-type: none"> English A: Literature, or English A: Language and Literature, or Literature and Performance, OR <p>At least 3 in one of the following HL subjects:</p> <ul style="list-style-type: none"> English A: Literature, or English A: Language and Literature, OR <p>At least 5 in one of the following SL subjects:</p> <ul style="list-style-type: none"> English AB, or English B, OR <p>At least 4 in the following HL subject:</p> <ul style="list-style-type: none"> English B. 	<p>At least 5 in one of the following SL subjects:</p> <ul style="list-style-type: none"> English A: Literature, or English A: Language and Literature, or Literature and Performance, OR <p>At least 4 in one of the following HL subjects:</p> <ul style="list-style-type: none"> English A: Literature, or English A: Language and Literature, OR <p>At least 6 in one of the following SL subjects:</p> <ul style="list-style-type: none"> English AB, or English B, OR <p>At least 5 in the following HL subject:</p> <ul style="list-style-type: none"> English B. 	<p>At least 3 in any mathematics subject at SL or HL level.</p>	<p>At least 4 in one of the following SL subjects:</p> <ul style="list-style-type: none"> Mathematics: Applications and Interpretations, or Mathematics: Analysis and Approaches <p>At least 3 in one of the following HL subjects:</p> <ul style="list-style-type: none"> Mathematics: Applications and Interpretations, or Mathematics: Analysis and Approaches 	<p>At least 4 in one of the following SL subjects:</p> <ul style="list-style-type: none"> Mathematics: Analysis and Approaches, OR <p>At least 3 in one of the following HL subjects:</p> <ul style="list-style-type: none"> Mathematics: Applications and Interpretations, Mathematics: Analysis and Approaches. 	<p>At least 4 at SL or 3 at HL in one of the below (unless otherwise stated): Science approved list: IB (SL or HL): Biology, Chemistry, Environmental Systems and Societies (SL only), Geography, General Mathematics, (HL only), Mathematics: Analysis and Approaches (HL only), Mathematics: Applications and Interpretations (HL only), Physics or Psychology.</p>



DISCOVER MONASH IN 2024

Do you want to learn more about Monash, get a feel for which course is right for you, or perhaps experience what life and study would be like on one of our four campuses? We've got an event to suit you.

About Monash events

Learn more about what your study options are, pathway opportunities, scholarships, SEAS, fees, accommodation and everything else there is to know about studying at Monash.

Discipline and course events

Hear from current and past students as well as academics across our ten faculties. You'll find out more about our courses, internships, career outcomes and so much more!

Campus experience events

Join us at Open Day to see and experience student life at Monash. You can also tour one of our four Victorian campuses throughout the year.

Find out more!

monash.edu/discover

MONASH UNIVERSITY
monash.edu

FIND A COURSE
monash.edu/study

FUTURE STUDENT ENQUIRIES

**Australian citizens, permanent residents
and New Zealand citizens**
monash.edu/study/contact

International students
T Australia freecall: 1800 MONASH (666 274)
T +61 3 9903 4788 (outside Australia)
E study@monash.edu

