

SSC CHSL 2023 Tier 1 August 4 Shift 1 Question Paper with Answers

Roll Number	
Candidate Name	
Exam Date	04/08/2023
Exam Time	9:00 AM - 10:00 AM
Subject	CHSL Exam 2023 Tier I

Section : English Language

Q.1 Select the most appropriate option that can replace the underlined word in the following sentence.

Abraham narrated Reshma his last escapade in a dramatic way.

- Ans 1. exertion
 2. ordeal
 3. adventure
 4. escape

Question ID : 264330148925
Status : Answered
Chosen Option : 3

Q.2 Select the most appropriate option to fill in the blank.
The chef's culinary creations were infused with a distinctive _____ that set them apart from typical restaurant fare.

- Ans 1. flare
 2. fair
 3. flere
 4. flair

Question ID : 264330143964
Status : Answered
Chosen Option : 4

Q.3 Parts of the following sentence have been given as options. Select the option that contains an error.

The company was sued for breach of contract, but it still deny any wrongdoing.

- Ans 1. The company was sued
 2. for breach of contract
 3. any wrongdoing
 4. but it still deny

Question ID : 264330142561
Status : Answered
Chosen Option : 4

Q.4 Select the most appropriate meaning of the underlined phrase in the following sentence.
After procrastinating for weeks, I finally had to bite the bullet and ask my boss for a raise.

- Ans 1. To give up easily
 2. To endure a painful or difficult situation with courage and determination
 3. To be indecisive
 4. To take the easy way out

Question ID : 264330143946
Status : Answered
Chosen Option : 2

Q.5 Select the most appropriate homonym in the context of the following sentence to fill in the blank.

He was convicted of assaulting a police officer, but he got off with a _____ sentence.

- Ans 1. light: any device serving as a source of illumination
 2. light: not serious or profound
 3. light: the energy from the sun
 4. light: lightly; with few burdens

Question ID : 264330142647
Status : Answered
Chosen Option : 2

Q.6 Select the option that expresses the following sentence in positive degree of comparison. She is liked by everybody as she is so good.

- Ans 1. She is good because everybody likes her.
 2. She is liked by everybody for being good.
 3. Everybody like her as she is good.
 4. She is so good that everybody likes her.

Question ID : 264330149503
Status : Answered
Chosen Option : 4

Q.7 Select the most appropriate ANTONYM of the given word.
Copious

- Ans 1. Galore
 2. Enough
 3. Unsparing
 4. Meagre

Question ID : 264330144276
Status : Answered
Chosen Option : 1

Q.8 Select the most appropriate option that expresses the given sentence in active voice.
The book was written by the author over a period of two years.

- Ans 1. The author wrote the book over a period of two years.
2. The book was written over a period of two years.
3. The book was being written by the author over a period of two years.
4. The period of two years was taken by the author to write the book.

Question ID : 264330144188
Status : Answered
Chosen Option : 1

Q.9 Choose the correct meaning of the underlined word in the given sentence.
Don't you think the dog would need a kennel to stay?

- Ans 1. A type of toy
2. A type of seed
3. A house for a dog or a cat
4. A small piece of material

Question ID : 264330149738
Status : Answered
Chosen Option : 3

Q.10 Select the most appropriate ANTONYM for 'apprehension' in the given sentence.

Shradha was never in such a situation before; her excitement was understandable for her peers.

- Ans 1. Before
2. Excitement
3. Peers
4. Situation

Question ID : 264330144116
Status : Answered
Chosen Option : 2

Q.11 Select the option that expresses the given sentence in active voice.

The test was passed by only a few students.

- Ans 1. Only a few students passed the test.
2. The test was not passed by many students.
3. Many students did not pass the test.
4. Very few students passed the test.

Question ID : 264330142571
Status : Answered
Chosen Option : 1

Q.12 Parts of a sentence are given below in jumbled order. Select the option that arranges the parts in the correct order to form a meaningful sentence.

- A. through the streets of London on a single day in June 1923
- B. the novel is as patterned as a Post-Impressionist painting
- C. can trace Clarissa's and Septimus's movements
- D. but is also so accurately representational that the reader

- Ans
- 1. B, C, D, A
 - 2. A, D, B, C
 - 3. B, D, C, A
 - 4. C, A, B, D

Question ID : 264330149583
Status : Answered
Chosen Option : 3

Q.13 Select the INCORRECTLY spelt word.

- Ans
- 1. Mischievous
 - 2. Coincidence
 - 3. Homogeneous
 - 4. Pronunciation

Question ID : 264330143998
Status : Answered
Chosen Option : 3

Q.14 Select the most appropriate meaning of the underlined idiom.

Getting the long-awaited promotion is a milestone in her career.

- Ans
- 1. Burden
 - 2. Important event
 - 3. Wonder
 - 4. Mishap

Question ID : 264330144380
Status : Answered
Chosen Option : 2

Q.15 Select the most appropriate option that can substitute the underlined segment in the given sentence.

Mr. Arvind was accused of beating up before the students in the class.

- Ans
- 1. accused of beating up off the
 - 2. accused of beating up of the
 - 3. accused of beating up on the
 - 4. accused of beating up in the

Question ID : 264330143623
Status : Answered
Chosen Option : 2

Q.16 Select the INCORRECTLY spelt word.

The government is bringing a new law where every municipal will have its own hospitals across the country.

- Ans 1. Hospitals
 2. Government
 3. Country
 4. Municipal

Question ID : 264330144129
Status : Answered
Chosen Option : 4

Q.17 Parts of a sentence are given below in jumbled order. Select the option that arranges the parts in the correct order to form a meaningful sentence.

- A.The prosperity and business acumen
B.Mumbai and Kolkata indicate that in the commercial sector
C.Of the great industrial and commercial houses in
D.India has a considerable potential for modernisation

- Ans 1. A, C, B, D
 2. A, C, D, B
 3. B, D, A, C
 4. D, C, B, A

Question ID : 264330142619
Status : Answered
Chosen Option : 1

Q.18 Select the most appropriate ANTONYM of the given word.
Abrogate

- Ans 1. Establish
 2. Eradicate
 3. Demoralise
 4. Sabotage

Question ID : 264330147534
Status : Answered
Chosen Option : 1

Q.19 Select the most appropriate option to substitute the underlined segment in the given sentence. If no substitution is required, select 'No substitution'.

Swami learned music when he is studying in the third class.

- Ans 1. he will study
 2. No substitution
 3. he will be studying
 4. he was studying

Question ID : 264330144374
Status : Answered
Chosen Option : 4

Q.20 Select the most appropriate option that can substitute the underlined words in the following sentence.

If we had moved to Italy when I was a child, I will had an Italian accent.

- Ans
- 1. I will be have
 - 2. I would has
 - 3. I would have had
 - 4. I am having

Question ID : 264330142626
Status : Answered
Chosen Option : 3

Comprehension:

In the following passage, some words have been deleted. Read the passage carefully and select the most appropriate option to fill in each blank.

Nainital has a 1. _____ lake. Tourists come from far and wide to 2. _____ boating here. There is a skating place behind it. People who skate here say that the ride seems to go round with them. Evenings are also pleasant here. The 3. _____ of the electric lights looks as if they are dancing in the ripples of the lake. Truly, Nainital is an 4. _____ city of 5. _____ beauty.

SubQuestion No : 21

Q.21 Select the most appropriate option for blank 1.

- Ans
- 1. sagacious
 - 2. beautiful
 - 3. pleasing
 - 4. alluring

Question ID : 264330151095
Status : Answered
Chosen Option : 2

Comprehension:

In the following passage, some words have been deleted. Read the passage carefully and select the most appropriate option to fill in each blank.

Nainital has a 1. _____ lake. Tourists come from far and wide to 2. _____ boating here. There is a skating place behind it. People who skate here say that the ride seems to go round with them. Evenings are also pleasant here. The 3. _____ of the electric lights looks as if they are dancing in the ripples of the lake. Truly, Nainital is an 4. _____ city of 5. _____ beauty.

SubQuestion No : 22

Q.22 Select the most appropriate option for blank 2.

- Ans
- 1. adore
 - 2. enjoy
 - 3. celebrate
 - 4. appreciate

Question ID : 264330151096
Status : Answered
Chosen Option : 2

Comprehension:

In the following passage, some words have been deleted. Read the passage carefully and select the most appropriate option to fill in each blank.

Nainital has a 1. _____ lake. Tourists come from far and wide to 2. _____ boating here. There is a skating place behind it. People who skate here say that the ride seems to go round with them. Evenings are also pleasant here. The 3. _____ of the electric lights looks as if they are dancing in the ripples of the lake. Truly, Nainital is an 4. _____ city of 5. _____ beauty.

SubQuestion No : 23

Q.23 Select the most appropriate option for blank 3.

- Ans 1. shadow
 2. echo
 3. reflection
 4. mirror

Question ID : 264330151097
Status : Answered
Chosen Option : 3

Comprehension:

In the following passage, some words have been deleted. Read the passage carefully and select the most appropriate option to fill in each blank.

Nainital has a 1. _____ lake. Tourists come from far and wide to 2. _____ boating here. There is a skating place behind it. People who skate here say that the ride seems to go round with them. Evenings are also pleasant here. The 3. _____ of the electric lights looks as if they are dancing in the ripples of the lake. Truly, Nainital is an 4. _____ city of 5. _____ beauty.

SubQuestion No : 24

Q.24 Select the most appropriate option for blank 4.

- Ans 1. opulent
 2. irritating
 3. ominous
 4. excellent

Question ID : 264330151098
Status : Answered
Chosen Option : 4

Comprehension:

In the following passage, some words have been deleted. Read the passage carefully and select the most appropriate option to fill in each blank.

Nainital has a 1. _____ lake. Tourists come from far and wide to 2. _____ boating here. There is a skating place behind it. People who skate here say that the ride seems to go round with them. Evenings are also pleasant here. The 3. _____ of the electric lights looks as if they are dancing in the ripples of the lake. Truly, Nainital is an 4. _____ city of 5. _____ beauty.

SubQuestion No : 25

Q.25 Select the most appropriate option for blank 5.

- Ans 1. logical
 2. natural
 3. synthetic
 4. chronic

Question ID : 264330151099
Status : Answered
Chosen Option : 2

Section : **General Intelligence**

Q.1 Select the option in which the letter-clusters share the same relationship as that shared by the given pair of letter-clusters.

AMY : TQA

YJZ : RNE

- Ans**
- 1. EAT : XFV
 - 2. TRY : MVW
 - 3. PAL : JEN
 - 4. CUP : VYR

Question ID : 264330146948
Status : **Answered**
Chosen Option : 4

Q.2 Select the number from among the given options that can replace the question mark (?) in the following series.

333, 321, 328, 328, 323, 335, ?

- Ans**
- 1. 316
 - 2. 322
 - 3. 318
 - 4. 325

Question ID : 264330146887
Status : **Answered**
Chosen Option : 3

Q.3 Four terms have been given, out of which three are alike in some manner and one is different. Select the one that is different.

- Ans**
- 1. LNT
 - 2. GJP
 - 3. BDJ
 - 4. TVB

Question ID : 264330146945
Status : **Answered**
Chosen Option : 2

Q.4 In a certain code language, 'rocket airplane sky stars' is written as 'ci pi di ki' and 'satellite moon sun sky' is written as 'ni ci ui li' and 'sky sun stars mars' is written as 'ui gj ki ci' and 'venus airplane moon planet' is written as 'di qi mi ni'. How is 'rocket' written in the given language?

- Ans**
- 1. ci
 - 2. ki
 - 3. pi
 - 4. di

Question ID : 264330147314
Status : **Answered**
Chosen Option : 3

Q.5 Select the pair of letter-clusters which follows the same pattern as that followed by the two sets of pair of letter-clusters given below. Both pairs of letter-clusters follow the same pattern.

HMQ : QMH

PWY : YWP

- Ans**
- 1. QRT : RQT
 - 2. UWK : VXL
 - 3. LJH : HJL
 - 4. EJK : OPQ

Question ID : 264330147116
Status : Answered
Chosen Option : 3

Q.6 In a certain code language,

'X + Y' means 'X is the sister of Y',
'X # Y' means 'X is the husband of Y',
'X \$ Y' means 'X is the daughter of Y',
'X % Y' means 'X is the mother of Y',
'X @ Y' means 'X is the brother of Y'.

Based on the above, which of the following expressions denotes that 'D is the wife of F'?

- Ans**
- 1. D % P # K + R % F
 - 2. F @ R + K + P % D
 - 3. P \$ D % R + K % F
 - 4. D % P + K @ R \$ F

Question ID : 264330147419
Status : Answered
Chosen Option : 4

Q.7 Which term from among the given options can replace the question mark (?) in the following series to make it logically complete?

LT 48, ?, NV 42, OW 39, PX 36

- Ans**
- 1. MU 45
 - 2. NU 44
 - 3. NS 44
 - 4. MS 46

Question ID : 264330146968
Status : Answered
Chosen Option : 1

Q.8 Identify the figure given in the options that when put in place of the question mark (?) will logically complete the series.

☆	4	4	S	=	Y	Y	P	
P	A	S	T	E	A	☆	E	T
T	A	P	☆	O	A	T	=	O
=	Y	Y	=	S	4	4	S	?

Ans

✗ 1.

4	Y
T = O	☆ C
S	P

✓ 2.

S	4
☆ A T =	C
P	Y

✗ 3.

S	4
T = O	☆ C
P	Y

✗ 4.

S	Y
☆ A T =	C
P	4

Question ID : 264330151189
 Status : Answered
 Chosen Option : 2

Q.9 If 'A' stands for '=', 'B' stands for '×', 'C' stands for '+' and 'D' stands for '-', what will come in place of the question mark (?) in the following equation?

31 C 48 B 7 D 69 A 23 = ?

- Ans
- ✗ 1. 361
 - ✓ 2. 364
 - ✗ 3. 358
 - ✗ 4. 371

Question ID : 264330146423
 Status : Answered
 Chosen Option : 2

Q.10 What will come in the place of '?' in the following equation, if '×' and '+' are interchanged ?

$$101 + 38 - 78 \times 3 + 9 = ?$$

- Ans
- 1. -100
 - 2. -95
 - 3. -78
 - 4. -85

Question ID : 264330152191
Status : Answered
Chosen Option : 2

Q.11 Read the given statements and conclusions carefully. You have to take the given statements to be true even if they seem to be at variance from commonly known facts. You have to decide which conclusion/s logically follow/s from the given statements.

Statements: Some editors are journalists. All journalists are writers. No writer is a reporter.

Conclusion (I): Some writers are editors.

Conclusion (II): No reporter is a journalist.

- Ans
- 1. Only conclusion I follows.
 - 2. Only conclusion II follows.
 - 3. Both conclusions I and II follow.
 - 4. Neither conclusion I nor II follows.

Question ID : 264330152015
Status : Answered
Chosen Option : 3

Q.12 If it will be Tuesday tomorrow, then what day of the week will it be 100 days from today?

- Ans
- 1. Wednesday
 - 2. Monday
 - 3. Thursday
 - 4. Tuesday

Question ID : 264330146315
Status : Answered
Chosen Option : 1

Q.13 In a certain code language, 'mother teaches science' is written as '32 48 6@' and 'father teaches science' is written as '48 6@ #'. How is 'father' coded in the given language?

- Ans
- 1. 6@
 - 2. 48
 - 3. #
 - 4. 32

Question ID : 264330147447
Status : Answered
Chosen Option : 3

Q.14 Three of the following four are alike in a certain way and thus form a group. Which is the one that does NOT belong to that group?

(1) 11 – 120

(2) 13 – 168

(3) 15 – 224

(4) 18 – 325

Ans ✓ 1. 4

✗ 2. 1

✗ 3. 2

✗ 4. 3

Question ID : 264330152170

Status : Answered

Chosen Option : 1

Q.15 Which number can replace the question mark (?) in the following series?

999, 995, 986, 970, 945, ?

Ans ✓ 1. 909

✗ 2. 905

✗ 3. 901

✗ 4. 906

Question ID : 264330146330

Status : Answered

Chosen Option : 1

Q.16 Four number-pairs have been given, out of which three are alike in some manner and one is different. Select the one that is different.

(NOTE: Operations should be performed on the whole numbers, without breaking down the numbers into its constituent digits. E.g. 13 – Operations on 13 such as adding / subtracting / multiplying etc. to 13 can be performed. Breaking down 13 into 1 and 3 and then performing mathematical operations on 1 and 3 is not allowed.)

11 : 92

17 : 146

31 : 284

21 : 182

Ans ✗ 1. 21 : 182

✗ 2. 11 : 92

✗ 3. 17 : 146

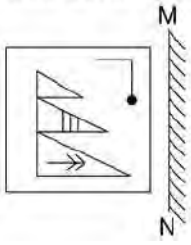
✓ 4. 31 : 284

Question ID : 264330147019

Status : Not Answered

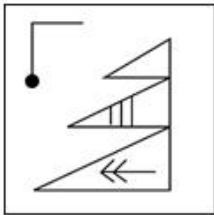
Chosen Option : --

Q.17 Select the correct mirror image of the given figure when the mirror is placed at MN as shown.



Ans

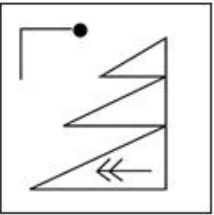
✓ 1.



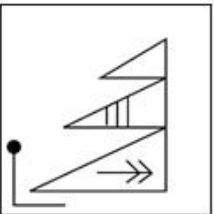
✗ 2.



✗ 3.



✗ 4.



Question ID : 264330146488
 Status : Answered
 Chosen Option : 1

Q.18 Find out the correct alternative that when filled in the blanks in the same sequence will make the series logically complete.

W_KY _ENC YG_G ZIT_ _KWO

✗ 1. BXQGA

✓ 2. CXQKA

✗ 3. AYQGB

✗ 4. DXRKA

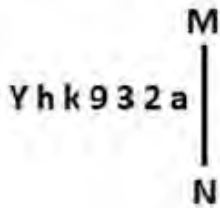
Question ID : 264330146623
 Status : Answered
 Chosen Option : 1

Q.19 The position of how many letters will remain unchanged if each of the letters in the word STRANGE is arranged in alphabetical order?

- Ans
- 1. Two
 - 2. One
 - 3. None
 - 4. Three

Question ID : 264330147165
Status : Answered
Chosen Option : 3

Q.20 Select the correct mirror image of the given figure when the mirror is placed at MN as shown below.



- Ans
- 1. a 5 5 0 k h Y
 - 2. a 5 9 3 k h Y
 - 3. a 5 3 0 k h Y
 - 4. a 5 5 6 k h Y

Question ID : 264330146668
Status : Answered
Chosen Option : 1

Q.21 Select the option in which the numbers share the same relationship as that shared by the given pair of numbers.

3 : 22

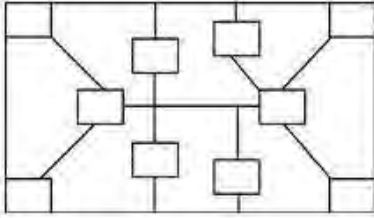
6 : 211

(NOTE: Operations should be performed on the whole numbers, without breaking down the numbers into its constituent digits. E.g. 13 – Operations on 13 such as adding / subtracting / multiplying etc. to 13 can be performed. Breaking down 13 into 1 and 3 and then performing mathematical operations on 1 and 3 is not allowed)

- Ans
- 1. 8 : 509
 - 2. 5 : 113
 - 3. 7 : 330
 - 4. 4 : 59

Question ID : 264330150869
Status : Answered
Chosen Option : 4

Q.22 How many rectangles are there in the given figure?



- Ans
- 1. 9
 - 2. 11
 - 3. 10
 - 4. 12

Question ID : 264330146909
Status : Answered
Chosen Option : 4

Q.23 Select the combination of letters that when sequentially placed in the blanks of the given series will complete the series.

A _DC _FHG IJ_K _NPO QRT_

- Ans
- 1. BEKMS
 - 2. BELNU
 - 3. BELMS
 - 4. BEKNU

Question ID : 264330146871
Status : Answered
Chosen Option : 3

Q.24 D, E का बेटा है। M, E का पति है। A, E की मां है। A की शादी T से हुई है। T का D से क्या संबंध है?

- Ans
- 1. मां की मां
 - 2. पिता के पिता
 - 3. पिता की मां
 - 4. मां के पिता

Question ID : 264330147294
Status : Answered
Chosen Option : 4

Q.25 In the following number-pairs, the second number is obtained by applying certain mathematical operations to the first number. Select the set in which the numbers are related in the same way as are the numbers of the following sets.

(NOTE: Operations should be performed on the whole numbers, without breaking down the numbers into its constituent digits. E.g. 13 - Operations on 13 such as adding / subtracting / multiplying etc. to 13 can be performed. Breaking down 13 into 1 and 3 and then performing mathematical operations on 1 and 3 is not allowed.)

(63, 496)

(42, 328)

Ans ✓ 1. (48, 376)

✗ 2. (25, 194)

✗ 3. (37, 302)

✗ 4. (63, 512)

Question ID : 264330147007

Status : Answered

Chosen Option : 1

Section : Quantitative Aptitude

Q.1 Supriya made a profit of 8% by selling a t-shirt after offering a discount of 10%. If the marked price of the t-shirt is ₹1,080, then find its cost price (in ₹) for Supriya.

Ans ✗ 1. 920

✗ 2. 940

✗ 3. 880

✓ 4. 900

Question ID : 264330150537

Status : Answered

Chosen Option : 4

Q.2 If the difference between the compound interest and simple interest on a certain sum of money for 3 years at the rate of 4% per annum is ₹76, then what is the sum?

Ans ✗ 1. ₹16,725

✗ 2. ₹12,925

✓ 3. ₹15,625

✗ 4. ₹18,825

Question ID : 264330148400

Status : Answered

Chosen Option : 3

Q.3 यदि क्रमागत वर्षों में साधारण ब्याज की दर क्रमशः 4% और 5% है, तो 2 वर्षों में ₹25,000 पर कुल देय धनराशि क्या होगी?

- Ans
- 1. ₹26,250
 - 2. ₹28,250
 - 3. ₹26,000
 - 4. ₹27,250

Question ID : 264330148854
Status : Answered
Chosen Option : 4

Q.4 आदित्य एक ग्रिल पेंटिंग का काम 20 घंटे में पूरा कर सकता है जबकि विनय उसी काम को 15 घंटे में पूरा कर सकता है। यदि आदित्य और विनय दोनों साथ मिलकर काम करते हैं, तो ग्रिल पेंटिंग का काम कितने घंटों में पूरा हो जाएगा?

- Ans
- 1. $10\frac{2}{3}$
 - 2. 10
 - 3. 12
 - 4. $8\frac{4}{7}$

Question ID : 264330147902
Status : Answered
Chosen Option : 4

Q.5 Find the length of a tangent drawn to a circle with a radius of 6 cm, from a point 10 cm from the centre of the circle.

- Ans
- 1. 12 cm
 - 2. 9 cm
 - 3. 8 cm
 - 4. 10 cm

Question ID : 264330148106
Status : Answered
Chosen Option : 3

Q.6 Simplify the expression:

$$\frac{(u-v)^3 + (v-w)^3 + (w-u)^3}{(u^2-v^2)^3 + (v^2-w^2)^3 + (w^2-u^2)^3}$$

- Ans
- 1. $\frac{1}{(u+v)(v+w)(w+u)}$
 - 2. 1
 - 3. $\frac{3}{(u+v)(v+w)(w+u)}$
 - 4. 0

Question ID : 264330150571
Status : Not Answered
Chosen Option : --

Q.7 The successive discounts of 15% and 20% is equivalent to a single discount of:

- Ans
- 1. 25%
 - 2. 28%
 - 3. 32%
 - 4. 35%

Question ID : 264330147925
Status : Answered
Chosen Option : 3

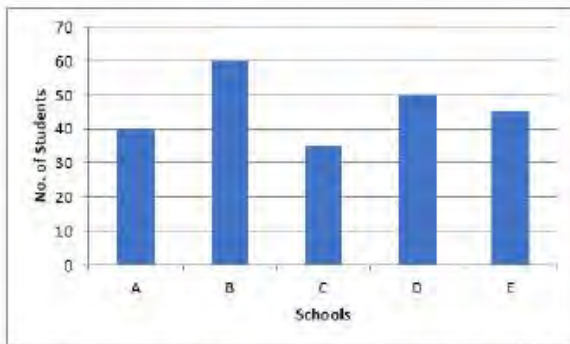
Q.8 What is the value of the expression

$$\sin A \left(1 + \frac{\sin A}{\cos A} \right) + \cos A \left(1 + \frac{\cos A}{\sin A} \right) ?$$

- Ans
- 1. $\sec A + \operatorname{cosec} A$
 - 2. $\sin A + \cos A$
 - 3. $\sin A - \cos A$
 - 4. $\sec A - \operatorname{cosec} A$

Question ID : 264330147982
Status : Not Answered
Chosen Option : --

Q.9 The Graph shows the number of students (in thousand) admitted to five schools.



The ratio between the total number of students admitted in schools B and D to the total number of students admitted in schools A, C and E is:

- Ans
- 1. 11 : 10
 - 2. 10 : 11
 - 3. 12 : 11
 - 4. 11 : 12

Question ID : 264330148817
Status : Answered
Chosen Option : 4

Q.10 The third proportion of 1.8 and 9 is:

- Ans
- 1. 7.5
 - 2. 35
 - 3. 81
 - 4. 45

Question ID : 264330148264
Status : Answered
Chosen Option : 4

Q.11 If $\left(w + \frac{1}{w}\right) = 6$, then what will be the value of $\left(w - \frac{1}{w}\right)$?

- Ans
- 1. $4\sqrt{2}$
 - 2. $\sqrt{2}$
 - 3. $3\sqrt{2}$
 - 4. $2\sqrt{2}$

Question ID : 264330150568
Status : Answered
Chosen Option : 1

Q.12 The value of the expression $[\cot 1^\circ \cdot \cot 2^\circ \cdot \cot 3^\circ \cdot \cot 4^\circ \cdot \cot 5^\circ \dots \cot 178^\circ \cot 179^\circ]$ is:

- Ans
- 1. 1235
 - 2. $\frac{1}{2}$
 - 3. 1
 - 4. 0

Question ID : 264330148278
Status : Answered
Chosen Option : 3

Q.13 What is the largest five digit number exactly divisible by 88?

- Ans
- 1. 99992
 - 2. 99986
 - 3. 99984
 - 4. 99968

Question ID : 264330148161
Status : Answered
Chosen Option : 4

Q.14 Data given in the table shows the number of boys and girls enrolled for different games in an academy over 5 years.

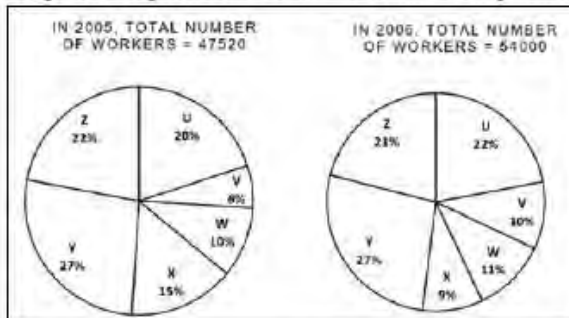
Years	Basketball		Football		Cricket	
	Boys	Girls	Boys	Girls	Boys	Girls
2018	46	34	42	37	45	35
2019	40	41	44	34	42	32
2020	43	40	40	32	38	36
2021	37	44	43	25	34	28
2022	34	41	41	32	41	39

With respect to football, in which year was the highest difference in the enrolment of boys and girls observed according to the given table?

- Ans
- 1. 2018
 - 2. 2022
 - 3. 2019
 - 4. 2021

Question ID : 264330147631
 Status : Answered
 Chosen Option : 4

Q.15 The pie charts given below show the workers doing different types of works in an office in 2005 and 2006.



The total number of workers of which two types of work in 2005 was equal to the number of workers doing U-type of work in 2006?

- Ans
- 1. X and Y
 - 2. U and W
 - 3. W and X
 - 4. V and W

Question ID : 264330150945
 Status : Not Answered
 Chosen Option : --

Q.16 In triangle RST, M and N are two points on RS and RT such that MN is parallel to the base ST of the triangle RST. If

$RM = \frac{1}{3} MS$, and $ST = 5.6$ cm, what is the ratio of $\frac{\text{Area of Triangle RMN}}{\text{Area of Trapezium MNST}}$?

Ans

1. $\frac{14}{15}$

2. $\frac{15}{16}$

3. $\frac{1}{15}$

4. $\frac{1}{16}$

Question ID : 264330147792
Status : Not Answered
Chosen Option : --

Q.17 Simplify: $\frac{(3.321)^2 + (2.681)^2 + (1.245)^2 - 3 \times 3.321 \times 2.681 \times 1.245}{(3.321)^2 + (2.681)^2 + (1.245)^2 - (3.321 \times 2.681) - (2.681 \times 1.245) - (1.245 \times 3.321)} = ?$

Ans

1. 6.125

2. 8.645

3. 7.247

4. 10.245

Question ID : 264330148067
Status : Answered
Chosen Option : 3

Q.18 Two men do the same journey by travelling at the speed of 18 km/h and 24 km/h, respectively. If one man takes 20 minutes more than the other man, then the distance (in km) of the total journey is:

Ans

1. 24

2. 20

3. 18

4. 21

Question ID : 264330148809
Status : Answered
Chosen Option : 1

Q.19 Milk and water in two vessels A and B are in the ratio 5 : 3 and 2 : 3, respectively. In what ratio should the liquids in both the vessels be mixed to obtain a new mixture in vessel C containing half milk and half water?

Ans

1. 3 : 4

2. 4 : 5

3. 2 : 3

4. 3 : 5

Question ID : 264330149980
Status : Answered
Chosen Option : 2

Q.20 A total of 7,50,000 voters participated in an election. A candidate received 3,82,500 votes which was 60% of the total valid votes. What was the percentage of invalid votes in the election?

- Ans
- 1. 15%
 - 2. 20%
 - 3. 12%
 - 4. 18%

Question ID : 264330147890
Status : Answered
Chosen Option : 1

Q.21 Akash bought an old phone for ₹3,450 and spent ₹450 on its repair. He sold it for ₹5,070. His profit percent is:

- Ans
- 1. 40%
 - 2. 20%
 - 3. 10%
 - 4. 30%

Question ID : 264330149271
Status : Answered
Chosen Option : 4

Q.22 Simplify the expression:

$$\frac{3 - \sin^2 A + \cos^2 A}{2 + 2\cos^2 A}$$

- Ans
- 1. 1
 - 2. 0
 - 3. -1
 - 4. 2

Question ID : 264330148901
Status : Not Answered
Chosen Option : --

Q.23 If two tangents inclined at an angle 120° are drawn to a circle of radius 6 cm, then what is the length (in cm) of each tangent?

- Ans
- 1. $3\sqrt{3}$
 - 2. $2\sqrt{3}$
 - 3. $4\sqrt{3}$
 - 4. $\sqrt{3}$

Question ID : 264330148054
Status : Not Answered
Chosen Option : --

Q.24 In a triangle ABC, two angles A and B are equal. If the exterior angle at $\angle A = 115^\circ$, find the measure of $\angle C$.

- Ans 1. 50°
 2. 130°
 3. 115°
 4. 65°

Question ID : 264330147680
Status : Answered
Chosen Option : 1

Q.25 If the length and breadth of a cuboid are increased by 7% and 6%, respectively, then the percentage increase in its volume is:

- Ans 1. 11.20%
 2. 13.42%
 3. 18.12%
 4. 15.25%

Question ID : 264330148051
Status : Answered
Chosen Option : 2

Section : General Awareness

Q.1 Which of the following classical dance forms is associated with Hindustani Classical Music?

- Ans 1. Kathak
 2. Sattriya
 3. Mohiniyattam
 4. Kathakali

Question ID : 264330145756
Status : Answered
Chosen Option : 1

Q.2 Which of these is NOT an NGO involved in microfinance related activities?

- Ans 1. MYRADA in Bangalore
 2. NABARD in Mumbai
 3. SEWA in Ahmedabad
 4. ADITHI in Patna

Question ID : 264330144672
Status : Answered
Chosen Option : 2

Q.3 Which of the following committees had recommended to incorporate the Fundamental Duties in the Indian Constitution?

- Ans
- 1. Sarkaria Commission
 - 2. BN Patil Committee
 - 3. Balwant Rai Mehta Committee
 - 4. Swaran Singh Committee

Question ID : 264330145925
Status : Answered
Chosen Option : 4

Q.4 Pratham Bank, the first Regional Rural Bank of India, had its Head Office in which state?

- Ans
- 1. Rajasthan
 - 2. Madhya Pradesh
 - 3. Punjab
 - 4. Uttar Pradesh

Question ID : 264330145696
Status : Answered
Chosen Option : 4

Q.5 Which state has become the first state to launch a dedicated Semiconductor Policy in July 2022?

- Ans
- 1. Haryana
 - 2. Madhya Pradesh
 - 3. Kerala
 - 4. Gujarat

Question ID : 264330146250
Status : Answered
Chosen Option : 4

Q.6 India won the Border-Gavaskar trophy 2023 by defeating _____ and qualified for the World Test Championship Final.

- Ans
- 1. Sri Lanka
 - 2. New Zealand
 - 3. Australia
 - 4. South Africa

Question ID : 264330145967
Status : Answered
Chosen Option : 3

Q.7 'Uttar Ramcharita' was the composition of which of the following poets?

- Ans
- 1. Bhavabhuti
 - 2. Jaideva
 - 3. Hemchandra
 - 4. Kalhan

Question ID : 264330148555
Status : Answered
Chosen Option : 1

Q.8 Which of the following statements is FALSE about the right to freedom of religion mentioned in the Indian Constitution ?

- Ans
- 1. It provides freedom to manage religious affairs.
 - 2. It provides freedom of worship.
 - 3. It is mentioned in Articles 25 to 28.
 - 4. It mentions that the state has its own religion.

Question ID : 264330145935
Status : Answered
Chosen Option : 4

Q.9 Which of the following statements is/are correct regarding liquidity trap?

- i. It is the point where speculative demand for money is infinitely inelastic and the liquidity preference curve becomes perfectly elastic.
- ii. It is the point where speculative demand for money is infinitely elastic and the liquidity preference curve becomes perfectly inelastic.
- iii. It is the point where speculative demand for money is infinitely elastic and the liquidity preference curve becomes perfectly elastic.
- iv. It is the point where speculative demand for money and the liquidity preference curves are not related.

- Ans
- 1. Only statement i is correct
 - 2. Only Statement iii is correct
 - 3. Only Statement iv is correct
 - 4. Only Statements i and ii are correct

Question ID : 264330151341
Status : Not Answered
Chosen Option : --

Q.10 _____ won silver at the Fide World Blitz Chess Championship, becoming the first Indian woman to win a medal at the prestigious event in 2022.

- Ans
- 1. Koneru Humpy
 - 2. Vantika Agrawal
 - 3. Bhakti Kulkarni
 - 4. Rameshbabu Vaishali

Question ID : 264330146299
Status : Answered
Chosen Option : 1

Q.11 Which tunnel connects Manali to Lahaul-Spiti valley?

- Ans
- 1. Atal Road Tunnel
 - 2. Pir Panjal Railway Tunnel
 - 3. Dr Syama Prasad Mookerjee Road Tunnel
 - 4. Karbude Railway Tunnel

Question ID : 264330155085
Status : Answered
Chosen Option : 4

Q.12 Which of the following states has the honour of being India's first carbon-free state?

- Ans
- 1. Arunachal Pradesh
 - 2. Himachal Pradesh
 - 3. Madhya Pradesh
 - 4. Kerala

Question ID : 264330149396
Status : Answered
Chosen Option : 4

Q.13 What is the scientific name of the banyan tree, a large evergreen tree of Asia characterised by its trunk-like aerial roots?

- Ans
- 1. Ficus benghalensis
 - 2. Gossypium herbaceum
 - 3. Santalum album
 - 4. Ananas comosus

Question ID : 264330145608
Status : Answered
Chosen Option : 1

Q.14 Cultivating large farms with moderately low inputs of labour and capital is referred to as _____.

- Ans
- 1. hybrid cultivation
 - 2. extensive cultivation
 - 3. intensive cultivation
 - 4. capitalist cultivation

Question ID : 264330144738
Status : Not Answered
Chosen Option : --

Q.15 What was the percentage of women working in the primary sector of India as of 2011-2012?

- Ans
- 1. 61%
 - 2. 63.08%
 - 3. 64.5%
 - 4. 62.8%

Question ID : 264330149635
Status : Not Answered
Chosen Option : --

Q.16 Padma Shri awardee of 2021, Kanaka Raju is associated with which of the following tribal folk dance forms?

- Ans
- 1. Gussadi
 - 2. Wancho
 - 3. Chalo
 - 4. Popir

Question ID : 264330151215
Status : Not Answered
Chosen Option : --

Q.17 Hardness of water is expressed in terms of:

- Ans
- 1. mole
 - 2. molarity
 - 3. ppm
 - 4. normality

Question ID : 264330145681
Status : Answered
Chosen Option : 2

Q.18 Which of the following is NOT a common product offered by microfinance institutions in India?

- Ans
- 1. Credit cards
 - 2. Personal loans
 - 3. Insurance products
 - 4. Savings accounts

Question ID : 264330145702
Status : Answered
Chosen Option : 1

Q.19 What is the minimum lane width in Swimming in metres?

- Ans
- 1. 2.10
 - 2. 2.11
 - 3. 2.12
 - 4. 2.13

Question ID : 264330145918
Status : Answered
Chosen Option : 2

Q.20 Which is the IUPAC group prefix of acyl halides compounds?

- Ans
- 1. Alkoxy carbonyl
 - 2. Carbamoyl
 - 3. Cyano
 - 4. Halocarbonyl

Question ID : 264330150722
Status : Not Answered
Chosen Option : --

Q.21 The Vernacular Press Act was enacted during the regime of which viceroy of India?

- Ans
- 1. Lord Dalhousie
 - 2. Lord Hastings
 - 3. Lord Ripon
 - 4. Lord Lytton

Question ID : 264330152558
Status : Answered
Chosen Option : 4

Q.22 Tusu Parab is the harvest festival of which of the following Indian states?

- Ans
- 1. Gujarat
 - 2. Sikkim
 - 3. Karnataka
 - 4. Jharkhand

Question ID : 264330145776
Status : Answered
Chosen Option : 2

Q.23 The photoelectric effect demonstrates which nature of light?

- Ans
- 1. Crystalline nature
 - 2. Particle nature
 - 3. Dual nature
 - 4. Wave nature

Question ID : 264330145674
Status : Not Answered
Chosen Option : --

Q.24 From which place did the Revolt of 1857 start?

- Ans
- 1. Agra
 - 2. Meerut
 - 3. Kanpur
 - 4. Delhi

Question ID : 264330150220
Status : Answered
Chosen Option : 2

Q.25 Who among the following personalities is associated with the musical instrument Flute?

- Ans
- 1. Ustad Zakir Hussain
 - 2. Ustad Bismillah Khan
 - 3. Pandit Hari Prasad Chaurasia
 - 4. Ustad Vilayat Khan

Question ID : 264330145785
Status : Answered
Chosen Option : 3