

SSC CHSL 2023 Tier 1 August 10 Shift 4 Question Paper with Answers

Roll Number	
Candidate Name	
Exam Date	10/08/2023
Exam Time	5:15 PM - 6:15 PM
Subject	CHSL Exam 2023 Tier I

Section : English Language

Q.1 Select the option that expresses the given sentence in active voice.
By whom were these letters written?

- Ans 1. Who have written these letters?
 2. Who writes these letters?
 3. Who has written this letters?
 4. Who wrote these letters?

Question ID : 264330151290
Status : Answered
Chosen Option : 4

Q.2 Select the option that expresses the given sentence in active voice.
The mice were chased by the cat.

- Ans 1. The cat chased the mice.
 2. The cat is chasing the mice.
 3. The cat are chased the mice.
 4. The cat chases the mice.

Question ID : 264330144828
Status : Answered
Chosen Option : 1

Q.3 The following sentence has been divided into parts. One of them may contain an error.
Select the part that contains the error from the given options.
It is imperative in understanding / the rising importance of artificial intelligence / in the public sector to increase the efficacy / and impact of the work done for public welfare.

- Ans 1. the rising importance of artificial intelligence
 2. It is imperative in understanding
 3. and impact of the work done for public welfare.
 4. in the public sector to increase the efficacy

Question ID : 264330143930
Status : Answered
Chosen Option : 2

Q.4 Select the most appropriate homophone to fill in the blank.

I will _____ any job offer _____ for the one that requires me to work on weekends.

- Ans 1. except; accept
 2. expect; except
 3. expect; accept
 4. accept; except

Question ID : 264330144373
Status : Answered
Chosen Option : 4

Q.5 Sentences of a paragraph are given below in jumbled order. Select the option that arranges the sentences in the correct order to form a meaningful and coherent paragraph.

- A. These changes were sure to happen as technological intervention cannot be arrested anywhere.
B. Recent times have marked a major change in the teaching-learning process in the educational sector.
C. A willing acceptance and practicing it to achieve excellence into it is the single option to all educators.
D. Beyond this, the constant flux in the diversified areas of academics has forced this change.

- Ans 1. A, B, C, D
 2. B, A, C, D
 3. B, A, D, C
 4. A, D, B, C

Question ID : 264330148747
Status : Answered
Chosen Option : 3

Q.6 Select the most appropriate option that can substitute the underlined segment in the given sentence.

She will accept his love proposal if he will express impressively.

- Ans 1. if he has been pressed
 2. if he had express
 3. if he expresses
 4. if he expressed

Question ID : 264330143162
Status : Answered
Chosen Option : 3

Q.7 Select the most appropriate ANTONYM of the underlined word.
Everyone should be aware of the possibly greater potential for natural disasters where they live and what resources they have in case these happen.

- Ans 1. Maze
 2. Certainty
 3. Knot
 4. Neuter

Question ID : 264330143248
Status : Answered
Chosen Option : 2

Q.8 Select the most appropriate meaning of the given idiom.
Queer pitch

- Ans 1. Make a weird request
 2. Make a lot of progress
 3. Act out of normal
 4. Spoil somebody's chance of doing something

Question ID : 264330144284
Status : Answered
Chosen Option : 1

Q.9 Select the most appropriate option to substitute the underlined segment in the given sentence.

Ravindra has left the friends' meeting saying that he has bigger fish to catch to cook.

- Ans 1. he has mutton to cook
 2. he has bigger fish to fry
 3. he has bigger beef to eat
 4. he has big chicken to fry

Question ID : 264330144383
Status : Answered
Chosen Option : 2

Q.10 Select the most appropriate ANTONYM of the underlined word in the given sentence.
Due to the weather forecast that it is going to rain heavily here, all the arrangements are in turmoil.

- Ans 1. Peace
 2. Commotion
 3. Fuss
 4. Uproar

Question ID : 264330143228
Status : Answered
Chosen Option : 1

Q.11 Select the most appropriate option that can substitute the underlined segment in the following sentence.

Could you please tell me which movie you would like to watch tonight?

- Ans
- 1. you may wish to scroll
 - 2. you have desire to see
 - 3. you are wishing to watch
 - 4. are you interested in watching

Question ID : 264330149588
Status : Answered
Chosen Option : 4

Q.12 Select the most appropriate ANTONYM of the word 'Facilitated' from the given sentence.

The author's recent bout of writer's block had hindered her typically prolific output of novels.

- Ans
- 1. Bout
 - 2. Prolific
 - 3. Hindered
 - 4. Output

Question ID : 264330144158
Status : Answered
Chosen Option : 3

Q.13 Parts of the following sentence have been given as options. One of them may contain an error. Select the option that contains the error. If you don't find any error, mark 'No error' as your answer.

The soldier met a fearless death fighting on behalf at his country.

- Ans
- 1. The soldier met
 - 2. a fearless death
 - 3. No error
 - 4. fighting on behalf at his country

Question ID : 264330143035
Status : Answered
Chosen Option : 4

Q.14 Choose the correct meaning of the underlined word in the given sentence.

He became a teetotaler after witnessing the negative effects of alcohol on his friends.

- Ans
- 1. Someone who does not consume any alcoholic drink
 - 2. A person who likes to eat and drink
 - 3. A person who is very conscious of his health
 - 4. Someone who does not make friends

Question ID : 264330149745
Status : Answered
Chosen Option : 1

Q.15 Select the correctly spelt word.

- Ans 1. Concurrently
 2. Straitegy
 3. Efficient
 4. Productivity

Question ID : 264330143953
Status : Answered
Chosen Option : 3

Q.16 Select the INCORRECTLY spelt word.

- Ans 1. Procedure
 2. Procession
 3. Prescription
 4. Pilgrimmage

Question ID : 264330143239
Status : Answered
Chosen Option : 4

Q.17 Select the option that expresses the given sentence in superlative degree of comparison.

This type is the quiet and most efficient style of humidifier.

- Ans 1. This type is the quiet and efficient style of humidifier.
 2. No change needed
 3. This type is the quietest and most efficient style of humidifier.
 4. This humidifier is the quieter style of.

Question ID : 264330143884
Status : Not Answered
Chosen Option : --

Q.18 Select the most appropriate synonym of the bracketed word in the following sentence to fill in the blank.

It is hard to draw clear lines of _____ (division) between work and leisure.

- Ans 1. comprehension
 2. administration
 3. demarcation
 4. procrastination

Question ID : 264330142656
Status : Answered
Chosen Option : 3

Q.19 Select the most appropriate synonym of the underlined word.

The neighbour's words always tantalise us.

- Ans 1. Pacify
 2. Provoke
 3. Misguide
 4. Direct

Question ID : 264330143176
Status : Not Answered
Chosen Option : --

Q.20 Parts of a sentence are given below in jumbled order. Arrange the parts in the correct order to form a meaningful sentence.

- A. pleasure, fun and luxury
B. in life
C. more than anything else
D. modern Indian youth seek

- Ans 1. CDBA
 2. DACB
 3. BDCA
 4. ABCD

Question ID : 264330149916
Status : Answered
Chosen Option : 2

Comprehension:

In the following passage, some words have been deleted. Read the passage carefully and select the most appropriate option to fill in each blank.
Clean India Mission is one of the most _____(1) and popular missions to have taken place in India. This mission includes a reward to a state and a city. This encourages every citizen to keep the surroundings clean. This cleanliness campaign was _____(2) by the Indian government at the national level, _____(3) all the rural towns and urban cities. Its primary objective is to spread awareness and importance of cleanliness. Slogans are written on the banners and pictures are painted in a very attractive manner to evoke the feeling of cleanliness. After that, a major objective was to teach citizens to _____(4) of waste mindfully and to provide basic _____(5) facilities. For this, wet and dry dustbins are kept by every citizen whether it is home or office.

SubQuestion No : 21

Q.21 Select the most appropriate option to fill in blank number 1.

- Ans 1. insignificant
 2. meaningless
 3. significant
 4. demonstrative

Question ID : 264330151296
Status : Answered
Chosen Option : 3

Comprehension:

In the following passage, some words have been deleted. Read the passage carefully and select the most appropriate option to fill in each blank.

Clean India Mission is one of the most _____(1) and popular missions to have taken place in India. This mission includes a reward to a state and a city. This encourages every citizen to keep the surroundings clean. This cleanliness campaign was _____(2) by the Indian government at the national level, _____(3) all the rural towns and urban cities. Its primary objective is to spread awareness and importance of cleanliness. Slogans are written on the banners and pictures are painted in a very attractive manner to evoke the feeling of cleanliness. After that, a major objective was to teach citizens to _____(4) of waste mindfully and to provide basic _____(5) facilities. For this, wet and dry dustbins are kept by every citizen whether it is home or office.

SubQuestion No : 22

Q.22 Select the most appropriate option to fill in blank number 2.

- Ans** 1. governed
 2. rehearsed
 3. dominated
 4. unorganised

Question ID : **264330151297**
Status : **Answered**
Chosen Option : **1**

Comprehension:

In the following passage, some words have been deleted. Read the passage carefully and select the most appropriate option to fill in each blank.

Clean India Mission is one of the most _____(1) and popular missions to have taken place in India. This mission includes a reward to a state and a city. This encourages every citizen to keep the surroundings clean. This cleanliness campaign was _____(2) by the Indian government at the national level, _____(3) all the rural towns and urban cities. Its primary objective is to spread awareness and importance of cleanliness. Slogans are written on the banners and pictures are painted in a very attractive manner to evoke the feeling of cleanliness. After that, a major objective was to teach citizens to _____(4) of waste mindfully and to provide basic _____(5) facilities. For this, wet and dry dustbins are kept by every citizen whether it is home or office.

SubQuestion No : 23

Q.23 Select the most appropriate option to fill in blank number 3.

- Ans** 1. encompassing
 2. preventing
 3. excluding
 4. restraining

Question ID : **264330151298**
Status : **Not Answered**
Chosen Option : **--**

Comprehension:

In the following passage, some words have been deleted. Read the passage carefully and select the most appropriate option to fill in each blank.

Clean India Mission is one of the most _____(1) and popular missions to have taken place in India. This mission includes a reward to a state and a city. This encourages every citizen to keep the surroundings clean. This cleanliness campaign was _____(2) by the Indian government at the national level, _____(3) all the rural towns and urban cities. Its primary objective is to spread awareness and importance of cleanliness. Slogans are written on the banners and pictures are painted in a very attractive manner to evoke the feeling of cleanliness. After that, a major objective was to teach citizens to _____(4) of waste mindfully and to provide basic _____(5) facilities. For this, wet and dry dustbins are kept by every citizen whether it is home or office.

SubQuestion No : 24

Q.24 Select the most appropriate option to fill in blank number 4.

- Ans 1. show
 2. disturb
 3. dispose
 4. finish

Question ID : **264330151299**
Status : **Answered**
Chosen Option : **3**

Comprehension:

In the following passage, some words have been deleted. Read the passage carefully and select the most appropriate option to fill in each blank.

Clean India Mission is one of the most _____(1) and popular missions to have taken place in India. This mission includes a reward to a state and a city. This encourages every citizen to keep the surroundings clean. This cleanliness campaign was _____(2) by the Indian government at the national level, _____(3) all the rural towns and urban cities. Its primary objective is to spread awareness and importance of cleanliness. Slogans are written on the banners and pictures are painted in a very attractive manner to evoke the feeling of cleanliness. After that, a major objective was to teach citizens to _____(4) of waste mindfully and to provide basic _____(5) facilities. For this, wet and dry dustbins are kept by every citizen whether it is home or office.

SubQuestion No : 25

Q.25 Select the most appropriate option to fill in blank number 5.

- Ans 1. sanitation
 2. refinement
 3. purification
 4. contamination

Question ID : **264330151300**
Status : **Answered**
Chosen Option : **1**

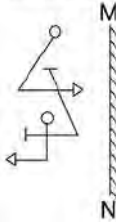
Section : **General Intelligence**

Q.1 In a certain code language, 'LAMP' is coded as '6413' and 'MALE' is coded as '1246'. What is the code for 'P' in the given code language?

- Ans 1. 3
 2. 1
 3. 2
 4. 6

Question ID : 264330147192
Status : Answered
Chosen Option : 1

Q.2 Select the correct mirror image of the given figure when the mirror is placed at MN as shown.



Ans

- 1.
- 2.
- 3.
- 4.

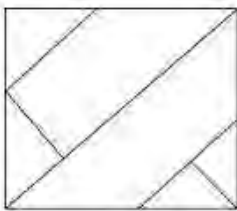
Question ID : 264330146490
Status : Answered
Chosen Option : 3

Q.3 15 is related to 29 following a certain logic. Following the same logic, 22 is related to 43. To which of the following is 35 related to, following the same logic?

- Ans
- 1. 78
 - 2. 69
 - 3. 62
 - 4. 72

Question ID : 264330147353
Status : Answered
Chosen Option : 2

Q.4 How many triangles are there in the given figure?



- Ans
- 1. Nine
 - 2. Six
 - 3. Eight
 - 4. Seven

Question ID : 264330147345
Status : Not Answered
Chosen Option : --

Q.5 Select the triad in which the numbers are related in the same way as are the numbers of the following triads.

15 - 14 - 13

17 - 21 - 25

(NOTE: Operations should be performed on the whole numbers, without breaking down the numbers into its constituent digits. E.g. 13 – Operations on 13 such as adding / subtracting / multiplying etc. to 13 can be performed. Breaking down 13 into 1 and 3 and then performing mathematical operations on 1 and 3 is not allowed)

- Ans
- 1. 19 - 22 - 25
 - 2. 34 - 12 - 28
 - 3. 38 - 28 - 10
 - 4. 23 - 42 - 46

Question ID : 264330147360
Status : Answered
Chosen Option : 1

Q.6 If 'A' stands for '+', 'B' stands for '×', 'C' stands for '÷' and 'D' stands for '-', what will come in place of the question mark '?' in the following equation?

$$3 B 26 C 15 D 36 A 3 = ?$$

- Ans
- 1. 82
 - 2. 80
 - 3. 81
 - 4. 83

Question ID : 264330147394
Status : Answered
Chosen Option : 3

Q.7 HFIJ is related to ECFG in a certain way based on the English alphabetical order. In the same way, WUXY is related to TRUV. Which of the following is NLOP related to, following the same logic?

- Ans
- 1. HEIJ
 - 2. KILM
 - 3. QORS
 - 4. LJMN

Question ID : 264330150975
Status : Answered
Chosen Option : 2

Q.8 Select the pair of letter-clusters which follows the same pattern as that followed by the two sets of pair of letter-clusters given below. Both pairs of letter-clusters follow the same pattern.

DAC : NKM

PNM : ZXW

- Ans
- 1. HIJ : EFG
 - 2. GJM : QTW
 - 3. POQ : STU
 - 4. KHG : ADE

Question ID : 264330147115
Status : Answered
Chosen Option : 2

Q.9 Select the option in which the numbers share the same relationship as that shared by the given pairs of numbers. [NOTE: Operations should be performed on the whole numbers, without breaking down the numbers into its constituent digits. E.g. 13 - Operations on 13 such as adding/ subtracting /multiplying etc. to 13 can be performed. Breaking down 13 into 1 and 3 and then performing mathematical operations on 1 and 3 is not allowed.]

12 : 65 and 13 : 70

- Ans
- 1. 14 : 65
 - 2. 15 : 80
 - 3. 16 : 75
 - 4. 18 : 85

Question ID : 264330150907
Status : Answered
Chosen Option : 2

Q.10 What should come in place of the question mark (?) in the given series?

48, 100, ?, 1232, 6170

- Ans
- 1. 306
 - 2. 280
 - 3. 304
 - 4. 214

Question ID : 264330147442
Status : Answered
Chosen Option : 1

Q.11 Read the given statements and conclusions carefully. Assuming that the information given in the statements is true, even if it appears to be at variance with commonly known facts, decide which of the given conclusions logically follow(s) from the statements.

Statements:

Some mangoes are oranges.
Some kiwis are guavas.
All oranges are kiwis.

Conclusions:

(I) Some kiwis are mangoes.
(II) Some guavas are oranges.

- Ans
- 1. Only conclusion (I) follows
 - 2. Neither conclusion (I) nor (II) follows
 - 3. Only conclusion (II) follows
 - 4. Both conclusions (I) and (II) follow

Question ID : 264330146592
Status : Answered
Chosen Option : 1

Q.12 The second number in the given number pairs is obtained by performing certain mathematical operations(s) on the first number. The same operation(s) are followed in all the number pairs except one. Find that odd number pair:

- Ans
- 1. 6 : 12
 - 2. 10 : 60
 - 3. 8 : 40
 - 4. 7 : 21

Question ID : 264330147131
Status : Answered
Chosen Option : 3

Q.13 If 11 October 1965 is Monday, then what will be the day of the week on 15 July 1973?

- Ans**
- 1. Monday
 - 2. Friday
 - 3. Tuesday
 - 4. Sunday

Question ID : 264330146570
Status : Not Answered
Chosen Option : --

Q.14 Select the word-pair that best represents a similar relationship to the one expressed in the pair of words given below.
(The words must be considered as meaningful English words and must not be related to each other based on the number of letters/consonants/vowels in the word.)

Cheese : Milk

- Ans**
- 1. Ketchup : Sauce
 - 2. Wine : Grape
 - 3. Tomato : Chilli
 - 4. Cake : Bake

Question ID : 264330150985
Status : Answered
Chosen Option : 2

Q.15 Three of the following four are alike in a certain way and thus form a group. Which is the one that does NOT belong to that group?

- Ans**
- 1. TVZ
 - 2. KMQ
 - 3. EGJ
 - 4. BDH

Question ID : 264330151976
Status : Answered
Chosen Option : 3

Q.16 In a certain code language,

$A + B$ means 'A is the mother of B'

$A - B$ means 'A is the husband of B'

$A \times B$ means 'A is the father of B'

$A \div B$ means 'A is the sister of B'

Based on the above, how is D related to H if ' $D \times E - F + G \div H$ '?

- Ans
- 1. Father
 - 2. Father's brother
 - 3. Mother's father
 - 4. Father's father

Question ID : 264330152012
Status : Answered
Chosen Option : 4

Q.17 In a certain code language,

$A + B$ means A is the father of B,

$A - B$ means A is the mother of B,

A / B means A is the wife of B,

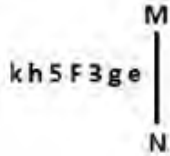
$A \times B$ means A is the husband of B.

Based on the above, how is D related to L in $L / C + D \times P$?

- Ans
- 1. Mother
 - 2. Father
 - 3. Daughter
 - 4. Son

Question ID : 264330152104
Status : Answered
Chosen Option : 4

Q.18 Select the correct mirror image of the given figure when the mirror is placed at MN as shown below.



- Ans
- 1. kh2F3ge
 - 2. eg3F2hk
 - 3. kh5F3ge
 - 4. kh2F3ge

Question ID : 264330146697
Status : Answered
Chosen Option : 2

Q.19 Select the combination of letters that when sequentially placed in the blanks of the given series will make the series logically complete.

FLG_K_JMPH_RUFP_

- Ans
- 1. GHMX
 - 2. OWMO
 - 3. HJMW
 - 4. ABDG

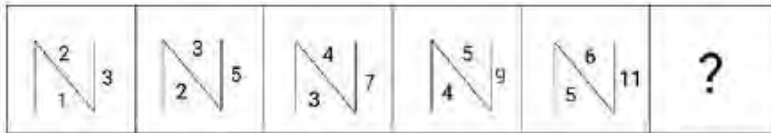
Question ID : 264330146739
Status : Not Answered
Chosen Option : --

Q.20 If 12 January 2004 is Monday, then what will be the day of the week on 26 February 2011?

- Ans
- 1. Saturday
 - 2. Monday
 - 3. Thursday
 - 4. Wednesday

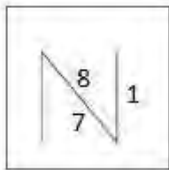
Question ID : 264330146565
Status : Not Answered
Chosen Option : --

Q.21 Identify the figure given in the options which when put in place of the question mark (?) will logically complete the series.

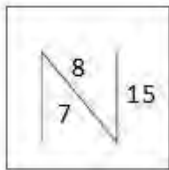


Ans

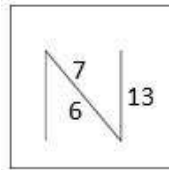
1.



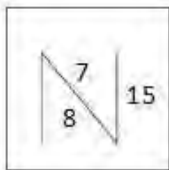
2.



3.



4.



Question ID : 264330147252

Status : Answered

Chosen Option : 3

Q.22 In a certain code language, 'ZEPHYR' is coded as 'IYLVH' and 'SCHIZY' is coded as 'BGQMIC'. What is the code for 'ZINCKY' in the given code language?

1. IMNGTC

2. IMWGSC

3. IMWGTC

4. IMWFTC

Question ID : 264330147400

Status : Not Answered

Chosen Option : --

Q.23 What should come in place of the question mark (?) in the given series?

35 24 ? 8 3 0

Ans 1. 14

2. 12

3. 15

4. 18

Question ID : 264330151008
Status : Answered
Chosen Option : 3

Q.24 What will come in the place of the question mark (?) in the following equation if '+' and '-' are interchanged and 'x' and '÷' are interchanged?

$$13 \div 145 \times 29 - 79 + 17 = ?$$

Ans 1. 119

2. 131

3. 124

4. 127

Question ID : 264330146413
Status : Answered
Chosen Option : 4

Q.25 Select the combination of letters that when sequentially placed in the blanks of the given series will complete the series.

G _ K M L _ M G K _ G I M _ I K

Ans 1. I I K K

2. M G I K

3. G G M I

4. I K M G

Question ID : 264330147057
Status : Answered
Chosen Option : 4

Section : Quantitative Aptitude

Q.1 Two candidates A and B contested in an election. 80% of the voters cast their votes, out of which 2% of the votes were invalid. A got 9,408 votes which was 60% of the valid votes. Find the total number of votes.

Ans 1. 12,000

2. 22,000

3. 20,000

4. 21,000

Question ID : 264330148134
Status : Not Answered
Chosen Option : --

Q.2 If $(5a + \frac{4}{a} - 2) = 13$ and $a > 0$, what is the value of $(25a^2 + \frac{16}{a^2})$?

- Ans
- 1. 158
 - 2. 157
 - 3. 185
 - 4. 175

Question ID : 264330147808
Status : Answered
Chosen Option : 3

Q.3 What is the value of x in the number 3426x if the number is divisible by 6 but NOT divisible by 5?

- Ans
- 1. 3
 - 2. 4
 - 3. 6
 - 4. 8

Question ID : 264330147818
Status : Answered
Chosen Option : 3

Q.4 Rice worth ₹504 per kg and ₹540 per kg are mixed with the third variety in the ratio 1 : 1 : 2. If the mixture is worth ₹612 per kg, find the price (per kg in ₹) of the third variety.

- Ans
- 1. 630
 - 2. 702
 - 3. 764
 - 4. 522

Question ID : 264330147616
Status : Not Answered
Chosen Option : --

Q.5 Simplify the given expression.

$$\frac{(x^2 - y^2)(x+y)}{x^2 + xy + y^2}$$

- Ans
- 1. $x-y$
 - 2. $x^2 - y^2$
 - 3. $x+y$
 - 4. $x^2 + y^2$

Question ID : 264330147919
Status : Answered
Chosen Option : 2

Q.6 If two circles of different radii touch externally, then what is the maximum number of common tangents that can be drawn to the two circles?

- Ans 1. 3
 2. 2
 3. 0
 4. 1

Question ID : 264330147646
Status : Answered
Chosen Option : 2

Q.7 Find the value of the following expression.

$$2(\tan^2 A \cos^2 A + \cos^2 A)$$

- Ans 1. 4
 2. 1
 3. 3
 4. 2

Question ID : 264330147686
Status : Answered
Chosen Option : 4

Q.8 If A, B, C are the acute angles, such that $\tan(A + B - C) = \frac{1}{\sqrt{3}}$, $\cos(B + C - A) = \frac{1}{2}$, and $\sin(C + A - B) = \frac{1}{\sqrt{2}}$. The value of A + B + C will be equal to:

- Ans 1. 90°
 2. 110°
 3. 170°
 4. 135°

Question ID : 264330150413
Status : Answered
Chosen Option : 4

Q.9 Study the table given below and answer the question.

The table shows the number of Athletes who participated in sports event from 4 different countries over the years.

Country ⇒	India		England		France		Australia	
	Male	Female	Male	Female	Male	Female	Male	Female
2016	460	180	740	480	480	280	320	100
2017	430	330	630	420	840	120	220	80
2018	200	150	400	130	350	160	100	90
2019	360	120	550	250	900	600	600	300

What is the ratio of the average number of female athletes who participated from England over all the years together to the average number of female athletes who participated from France over all the years together?

- Ans 1. 45 : 49
 2. 57 : 32
 3. 49 : 32
 4. 32 : 29

Question ID : 264330150785
Status : Answered
Chosen Option : 4

Q.10 If $a+5b=13$ and $ab=9$, find the value of a^2+25b^2 .

- Ans
- 1. 69
 - 2. 79
 - 3. 49
 - 4. 59

Question ID : 264330148222
Status : Answered
Chosen Option : 2

Q.11 In a triangle ABC; $8\angle A = 6\angle B = 3\angle C$. What are the degree measures of $\angle A, \angle B$ and $\angle C$?

- Ans
- 1. $48^\circ, 96^\circ, 36^\circ$
 - 2. $36^\circ, 96^\circ, 48^\circ$
 - 3. $36^\circ, 48^\circ, 96^\circ$
 - 4. $96^\circ, 48^\circ, 36^\circ$

Question ID : 264330147789
Status : Answered
Chosen Option : 3

Q.12 When P is subtracted from each of the numbers 8, 6, 2 and 9, the numbers so obtained in this order are in proportion. What is the mean proportional between $(3P-6)$ and $(9P-4)$?

- Ans
- 1. 26
 - 2. 28
 - 3. 29
 - 4. 24

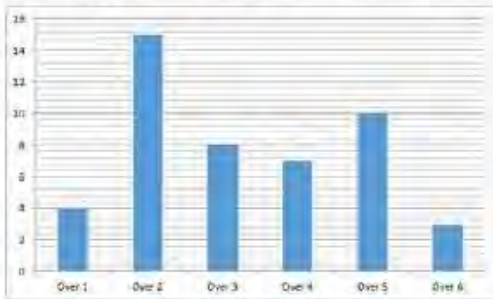
Question ID : 264330147964
Status : Not Answered
Chosen Option : --

Q.13 In a 140 m race, Pankaj runs at a speed of $\frac{5}{2}$ m/s. He gives a start of 20 m to Arun and still defeats him by 4 seconds. The speed of Arun is:

- Ans
- 1. 1.75 m/s
 - 2. 1.25 m/s
 - 3. 2 m/s
 - 4. 1.5 m/s

Question ID : 264330146522
Status : Not Answered
Chosen Option : --

Q.14 The bar graph below gives the runs scored by Team A in the first six overs of a cricket match.



The runs scored by Team A in the 7th over was 5 more than the runs scored by them in the 8th over, but 6 less than the runs scored by them in the 9th over. If the average runs scored per over by Team A in the first nine overs of the match was 9, how many runs did the team score in the 8th over?

- Ans
- 1. 5
 - 2. 7
 - 3. 6
 - 4. 8

Question ID : 264330146805
Status : Not Answered
Chosen Option : --

Q.15 A bookseller gives 7 books free on buying 13 books. Find the percentage of discount given to the customer's.

- Ans
- 1. 25%
 - 2. 20%
 - 3. 35%
 - 4. 30%

Question ID : 264330148196
Status : Answered
Chosen Option : 3

Q.16 In what time will ₹3,20,000 amount to ₹4,05,000 if compounded at 12.5% per annum?

- Ans
- 1. 1 year
 - 2. 2 years
 - 3. 3 years
 - 4. 4 years

Question ID : 264330148855
Status : Answered
Chosen Option : 2

Q.17 A can finish a work in 24 days and B in 30 days, individually. They work together for 11 days. The percentage of the work still to be finished will be:

- Ans
- 1. 18%
 - 2. 16%
 - 3. 17.5%
 - 4. 12.5%

Question ID : 264330149771
Status : Answered
Chosen Option : 3

Q.18 Two similar triangles are given i.e. $\triangle LMN \sim \triangle PQR$, with measurement of angle and side as angle L = 40° , angle N = 80° , LM = 6 cm, LN = 8 cm and PQ = 7.5 cm. Find the value of angle Q and side PR, respectively.

- Ans
- 1. 60° , 20 cm
 - 2. 50° , 6.5 cm
 - 3. 40° , 10 cm
 - 4. 60° , 10 cm

Question ID : 264330146531
Status : Answered
Chosen Option : 4

Q.19 Two circles of radius 2.4 cm and 4 cm, respectively, have a common tangent. The distance between the centres of the two circles is 6.5 cm. If the common tangent does not intersect the line joining the centres, then find the length of a common tangent to the circles.

- Ans
- 1. 6.0 cm
 - 2. 6.2 cm
 - 3. 6.1 cm
 - 4. 6.3 cm

Question ID : 264330148276
Status : Not Answered
Chosen Option : --

Q.20 Find the value of the following expression.

$$\frac{(1 + \sec\theta)}{\sec\theta} (1 - \cos\theta)$$

- Ans
- 1. $\cos^2\theta$
 - 2. $\sec^2\theta$
 - 3. $\cot^2\theta$
 - 4. $\sin^2\theta$

Question ID : 264330147687
Status : Answered
Chosen Option : 1

Q.21 Study the given table and answer the question that follows.

The table shows the total score scored by 8 batsmen in the year 2022.

Batsman	A	B	C	D	E	F	G	H
Total Score	1356	1301	1278	1156	1380	1281	1129	1365

Who is the second-highest scorer in the year 2022?

- Ans
- 1. E
 - 2. B
 - 3. A
 - 4. H

Question ID : 264330150839
Status : Answered
Chosen Option : 3

Q.22 An amount of ₹P was put at simple interest at a certain rate for 4 years. If it had been put at a 6% higher rate for the same period, it would have fetched ₹600 more interest. What is the value of 2.5 P?

- Ans
- 1. ₹3,750
 - 2. ₹6,250
 - 3. ₹4,850
 - 4. ₹2,500

Question ID : 264330151050
Status : Answered
Chosen Option : 1

Q.23 A shopkeeper marks his goods at 90% more than their cost price and allows a discount of 40% on the marked price. His gain percentage is:

- Ans
- 1. 18%
 - 2. 16%
 - 3. 14%
 - 4. 12%

Question ID : 264330148000
Status : Answered
Chosen Option : 3

Q.24 A sells a television to B for ₹4,860, thereby losing 19%. B sells it to C at a price which would have given A a 17% profit. Find the gain of B.

- Ans
- 1. ₹4,160
 - 2. ₹2,160
 - 3. ₹3,160
 - 4. ₹1,160

Question ID : 264330147725
Status : Answered
Chosen Option : 2

Q.25 A hemispherical dome of a building needs to be painted. If the circumference of the base of the dome is 154 cm, then find the cost of painting it if the cost of painting is ₹4 per 100 cm² (use $\pi = \frac{22}{7}$).

- Ans**
- 1. ₹150.92
 - 2. ₹150.66
 - 3. ₹105.29
 - 4. ₹105.66

Question ID : 264330147973
Status : Answered
Chosen Option : 2

Section : General Awareness

Q.1 Which statement is FALSE regarding fundamental rights mentioned in the Indian Constitution ?

Ans

- 1. Only Article 20 and 21 can be suspended during emergency
- 2. They are justiciable
- 3. Some fundamental rights are negative in nature
- 4. Can be suspended during emergency

Question ID : 264330145932
Status : Answered
Chosen Option : 3

Q.2 The Golden Quadrilateral connects which of the following cities?

Ans

- 1. Jammu-Sikkim Gangtok-Bhubaneswar -Mumbai
- 2. Delhi-Kolkata-Mumbai-Chennai
- 3. Kashmir Srinagar-Surat-Chennai-Kolkata
- 4. Chandigarh-Kolkata-Mumbai-Goa Panaji

Question ID : 264330149628
Status : Answered
Chosen Option : 2

Q.3 Which of the following government schemes provides subsidised food grains to poor households in India?

Ans

- 1. Pradhan Mantri Kaushal Vikas Yojana
- 2. Pradhan Mantri Garib Kalyan Anna Yojana
- 3. Pradhan Mantri Jan Arogya Yojana
- 4. Atal Pension Yojana

Question ID : 264330149376
Status : Not Answered
Chosen Option : --

Q.4 Who among the following boxers won the women's lightweight gold medal at the 2022 Commonwealth Games in Birmingham and received the BBC Emerging Player of the Year Award?

- Ans
- 1. Nikhat Zareen
 - 2. Lovlina Borgohain
 - 3. Saweety Boora
 - 4. Nitu Ghanghas

Question ID : 264330146285
Status : Answered
Chosen Option : 2

Q.5 Who is called the father of the modern Indian dance?

- Ans
- 1. Uday Shankar
 - 2. Ambui Singh
 - 3. CV Chandrasekhar
 - 4. Raja Reddy

Question ID : 264330148651
Status : Answered
Chosen Option : 1

Q.6 Which of the following statements are correct about Directive Principles of State Policy of the Indian Constitution ?

- A) They are negative in nature.
- B) They have moral and political sanctions.
- C) They promote the welfare of the rich.
- D) They are positive in nature.

- Ans
- 1. C and D
 - 2. A and B
 - 3. A and C
 - 4. B and D

Question ID : 264330146383
Status : Answered
Chosen Option : 4

Q.7 Which of the following festivals is celebrated on the Makar Sankranti day in Assam?

- Ans
- 1. Kati Bihu
 - 2. Magh Bihu
 - 3. Bohag Bihu
 - 4. Raksha Bandhan

Question ID : 264330145781
Status : Not Answered
Chosen Option : --

Q.8 The Pradhan Mantri Jan Dhan Yojana (PMJDY) was placed in the Guinness Book of World Records for which of the following achievements?

Ans 1.

Opening the largest number of bank accounts in one month

2.

Opening the largest number of bank accounts in one week

3.

Opening the largest number of bank accounts in one fortnight

4.

Opening the largest number of bank accounts in one day

Question ID : 264330146110

Status : Not Answered

Chosen Option : --

Q.9 In May 2022, President Ram Nath Kovind appointed ____ as the Lieutenant Governor of Delhi.

Ans 1. Manoj Sinha

2. Admiral D K Joshi

3. Dr Tamilisai Soundararajan

4. Vinai Kumar Saxena

Question ID : 264330146264

Status : Answered

Chosen Option : 2

Q.10 In which year was Mohandas Karamchand Gandhi born?

Ans 1. 1659

2. 1869

3. 1889

4. 1879

Question ID : 264330150232

Status : Answered

Chosen Option : 2

Q.11 Santoor is associated with whom among the following?

Ans 1. Pandit Shivkumar Sharma

2. Pandit Jasraj

3. Pandit Bhimsen Joshi

4. Hari prasad Chaurasia

Question ID : 264330144778

Status : Answered

Chosen Option : 1

Q.12 Which type of haploid unicellular eukaryote cells has a diameter of $\sim 10 \mu\text{m}$, and about half of their volume is occupied by cup-shaped chloroplasts?

- Ans
- 1. Hydrodictyon
 - 2. Ulva
 - 3. Chlamydomonas
 - 4. Oedogonium

Question ID : 264330145617
Status : Not Answered
Chosen Option : --

Q.13 Which of the following is the product as a result of the process of hydrolysis of orthoclase.

- Ans
- 1. Limonite
 - 2. Magnesite
 - 3. Gypsum
 - 4. Kaolinite

Question ID : 264330149256
Status : Not Answered
Chosen Option : --

Q.14 Which of these is NOT one of the reasons why the public sector played a dominant role in establishing the Industrial sector in India post-Independence?

- Ans
- 1. Poor savings capacity of the public
 - 2. To avoid generation of private profit
 - 3. Absence of large enough market for output
 - 4. Lack of adequate capital with private industrialists

Question ID : 264330144719
Status : Not Answered
Chosen Option : --

Q.15 Saurashtra won the Vijay Hazare Trophy 2022 by defeating:

- Ans
- 1. Karnataka
 - 2. Delhi
 - 3. Andhra
 - 4. Maharashtra

Question ID : 264330145972
Status : Answered
Chosen Option : 1

Q.16 'The Deccan Sabha' was founded by which of the following nationalists?

- Ans
- 1. Gopal Krishna Gokhale
 - 2. Pherozeshah Mehta
 - 3. Surendranath Banerjee
 - 4. Dadabhai Naoroji

Question ID : 264330152552
Status : Answered
Chosen Option : 2

Q.17 Who among the following medieval rulers focused his attention on the construction of sarais (shelter) for the convenience of travellers?

- Ans
- 1. Babur
 - 2. Sher Shah Suri
 - 3. Akbar
 - 4. Humayun

Question ID : 264330150095
Status : Not Answered
Chosen Option : --

Q.18 A diagonal relationship is found between which pair of the following elements?

- Ans
- 1. Li and Mg
 - 2. Be and B
 - 3. Be and Mg
 - 4. Na and Mg

Question ID : 264330145825
Status : Not Answered
Chosen Option : --

Q.19 Which of the following is NOT included in 'Operating Surplus'?

- Ans
- 1. Rent
 - 2. Profit
 - 3. Interest
 - 4. Wages in cash

Question ID : 264330145730
Status : Not Answered
Chosen Option : --

Q.20 The 2028 Olympic Games will take place in which city?

- Ans
- 1. Paris
 - 2. Tokyo
 - 3. Los Angeles
 - 4. Amsterdam

Question ID : 264330145908
Status : Answered
Chosen Option : 3

Q.21 Who among the following personalities won the Sangeet Natak Akademi Award 2021 for their contribution to the 'Chhau' dance?

- Ans
- 1. Bijay Kumar Jena
 - 2. Rabindra Atibudhi
 - 3. Bhuvan Kumar
 - 4. Trilochan Mohanta

Question ID : 264330151327
Status : Not Answered
Chosen Option : --

Q.22 Which of the following is NOT a monetary policy instrument of RBI?

- Ans
- 1. Government Spending
 - 2. Bank Rate
 - 3. Open Market Operations
 - 4. Cash Reserve Ratio

Question ID : 264330146114
Status : Answered
Chosen Option : 1

Q.23 Which of the following is NOT a component of investment?

- Ans
- 1. Addition to residential construction
 - 2. Money spent on purchasing shares of a company
 - 3. Machinery and equipment employed by a firm
 - 4. Inventories of raw materials stocked by a firm

Question ID : 264330144703
Status : Not Answered
Chosen Option : --

Q.24 Which of the following places in India experiences the lowest temperature?

- Ans
- 1. Jaisalmer
 - 2. Leh
 - 3. Munnar
 - 4. Bundelkhand

Question ID : 264330150246
Status : Answered
Chosen Option : 2

Q.25 What is the name of the 87th element on the periodic table that has no known biological role because it has a half-life of only 22 minutes?

- Ans
- 1. Meitnerium
 - 2. Dubnium
 - 3. Seaborgium
 - 4. Francium

Question ID : 264330145596
Status : Not Answered
Chosen Option : --